

# 2021

ANNUAL REPORT



**CREW**  
NETWORK   
FOUNDATION

# Table of Contents

---

2021 Board and Champion Directors.....	3
Letter from the Chair .....	4
Building a Foundation for the Future .....	5
By the Numbers .....	7
Campaigns Boost Member Giving .....	8
Chapter Champions 2021.....	9
Scholarship Program Impacts Lives.....	10
Scholarship Recipients.....	11
Scholarship Endowment.....	17
CREW Visionaries Donor Program.....	18
Annual Fundraiser .....	20
Organization Donors .....	22
Individual Donors.....	23

*The only Foundation dedicated  
solely to advancing women in  
commercial real estate.*

## EXECUTIVE BOARD/STAFF



**Jeanette Flory-Sgan**  
Chair  
CREW Seattle | AZCREW | CREW DC  
Cereus Asset Services LLC



**Vicky Gunning**  
Immediate Past Chair  
CREW Dallas  
Locke Lord LLC



**Christine Gorham**  
CREW Network Past President  
CREW Atlanta



**Wendy Mann, CAE**  
President  
CREW Network Foundation  
CEO  
CREW Network



**Justin Hawkins, CPA**  
Treasurer  
CREW Network Foundation  
CFO/COO  
CREW Network



**Laura Lewis**  
Vice President  
CREW Network Foundation  
Chief Communications Officer  
CREW Network



**Nichole Vanner**  
Foundation Coordinator  
CREW Network

## CHAIR EMERITUS

**Elizabeth E. Solender**, CREW Dallas

## HONORARY TRUSTEES

**M. Maureen Anders**, AZCREW

**Dottie Cunningham**, CREW New York

**Bonnie S. Gottlieb**, CREW DC

**Irene L. Hosford**, CREW Dallas

**Anne DeVoe Lawler**, CREW Seattle

**Diana L. Parker**, CREW Miami

## CHAMPION DIRECTORS



**Lisa Chappell**  
CREW San Diego  
Mission Federal Credit Union



**Joy Coleman**  
CREW Kansas City  
TreanorHL



**Michelle Goudeaux**  
CREW Silicon Valley  
Columbia Property Trust



**Michelle Hunte**  
Toronto CREW  
Walmart Canada



**Brenda Karp**  
CREW Richmond and  
CREW Coastal Virginia  
The Breeden Company



**Julie Kriegel**  
CREW-OKC  
Wiggin Properties LLC



**Marie McLucas**  
CREW Charlotte  
Primax Properties, LLC



**Jennifer Nyquist**  
CREW Atlanta  
Columbia Residential



**Sandi Quigley**  
CREW Palm Beach/Treasure Coast  
The Troika Group





Jeanette Flory-Sagan  
Founder/President  
Cereus Asset Services LLC  
CREW Seattle | AZCREW |  
CREW DC

# Letter from the Chair

It is with gratitude and honor on behalf of our board, executive committee, and volunteer leaders that I share with you the achievements of CREW Network Foundation in 2021. In a year of continued uncertainty and challenges, generous donors came together to move our mission forward, support fellow women in commercial real estate, and achieve unprecedented success.

Our Foundation Champion Directors, Chapter Champions and staff showed remarkable creativity, dedication, and passion for our mission in raising funds and expanding our reach and donor base. In 2021, CREW Network Foundation:

- Awarded 25 scholarships of \$5,000 (USD) continuing to advance the future of women in commercial real estate. [Meet our talented scholars here.](#)
- Raised more than \$67,000 through two giving campaigns—The Future of CRE is Female and We've Got Your Back
- Held our most successful annual fundraising event to date, achieving a record high for tickets sold, underwriter support, and total raised (\$168,550!)
- Inducted 11 new CREW Visionaries and added diamonds to 10 Visionaries' pins—the most in any single giving year

In the following pages of this report, you will find a recap of our 2021 achievements and impact, our inspiring scholars, and recognition of our generous supporters and volunteers.

Thank you for your commitment to CREW Network Foundation. It is with your continued support and dedication that we will continue to be the global leader in advancing women in commercial real estate for years to come.

With gratitude,

**Jeanette Flory-Sagan**  
2021 CREW Network Foundation Chair



# Building a Foundation for the Future

CREW Network Foundation is the charitable arm of CREW (Commercial Real Estate Women) Network and the only organization dedicating its resources solely towards transforming the commercial real estate industry by advancing women globally.

## Who We Serve

In a predominately male industry that is impacted by gender bias, CREW Network Foundation provides girls and women with education, support, and advocacy. We are growing the pipeline of women into commercial real estate with programs that educate women and girls about the career opportunities available to them, as well as providing resources to students pursuing CRE careers.

We bring women in commercial real estate together to share ideas and resources, invest in businesses, work to find solutions to common challenges and share opportunities for growth. We also encourage gender equity and diversity, and educate commercial real estate companies about the benefits of having greater diversity throughout its talent pipeline, employees, board and leadership.



## What We Do

### EDUCATE

The CREW Network Foundation Scholarship program supports future female leaders as they pursue university-level education that will lead to careers in commercial real estate. The number of scholarships awarded each year to female students attending college full time is based upon the availability of interest income from the endowment, contributions and matching corporate funds. Scholarship Endowment funds are permanently restricted and only investment earnings from those contributions can be used for funding current scholarships. Annual Current Scholarship funds are temporarily restricted for the purpose of funding current scholarships.

Scholarships are available to female (or those who identify as female) junior and senior undergraduate students, and enrolled full time in graduate programs to cover the cost of tuition and books. Applicants must have a minimum GPA of 3.0 on a 4.0 scale and must be a citizen of the U.S. or Canada to be eligible. Their major must be included in one or more of the CREW Network Qualified Fields of Commercial Real Estate (QFCRE) shown on the left.

- Accounting
- Acquisitions/Dispositions
- Appraisal
- Architecture
- Asset Management
- Brokerage
- CRE Business Development
- Commercial Insurance
- Commercial Lending
- Construction Management/  
General Contracting
- Consulting
- Corporate Real Estate
- Cost Segregation
- Economic Development
- Education
- Engineering
- Environmental  
CRE Executive
- Facility Management
- Finance
- CRE Human Resources
- Interior Design/Space Planning
- Investment Management
- Investor Relations
- Land Use Planning and Zoning
- Land Surveying
- Law
- Market Research
- Program Management/  
Project Management
- Property Management
- Public Sector
- Quasi-Governmental Transportation  
and Port Authorities
- Real Estate Development
- Relocation Services, Corporate
- Risk Management
- Title/Escrow

Despite the continued pandemic in 2021,  
**355 young girls**  
participated in a CREW Careers program.



In 2021, UCREW reached  
**over 575**  
college students.



## RESEARCH

Foundation contributions make it possible for CREW Network to remain the leading publisher of research on gender and diversity, equity, and inclusion in commercial real estate—research that is helping close the gender gap in the industry and marking progress through benchmark studies and annual research papers. This research directly supports CREW Network’s strategic initiatives and educational programming.

## OUTREACH

Commercial real estate offers rewarding and lucrative careers that are often overlooked because women are unaware of the opportunities that exist. CREW Network Foundation supports programs that educate women and girls about the career opportunities available to them, including:

- **CREW Careers** is a hands-on program, designed to introduce middle and high school girls to the many career opportunities available to them within the commercial real estate industry.
- **UCREW** introduces college students to opportunities within the commercial real estate industry. Members of CREW Network’s chapters serve as role models to teach students networking fundamentals, offer powerful career resources, and provide relationship building career development opportunities.
- **The CREW Network Mentoring Modules** provides a rich tapestry of principles organized in an easy-to-understand format. The success stories of our members often include descriptions of wise mentors, both male and female, who have made efforts to help grow careers through unofficial mentoring relationships. No group is better suited to mentor women in commercial real estate than CREW Network.

## GREATEST NEEDS FUND

Contributions to the Greatest Needs Fund are first used to cover the basic administrative costs of operations. Remaining funds are evaluated annually by the executive management committee and are often used to provide additional funding to scholarships, industry research, career outreach or are set aside as reserves to cover potential future needs.

# 2021 By the Numbers

## Giving Overview

- More than **\$382,343** (USD) raised
- **4,813** individual donors, an increase of nearly **13%** from 2020
- **11** CREW Visionary inductees
- **10** Visionaries added diamonds to their pins

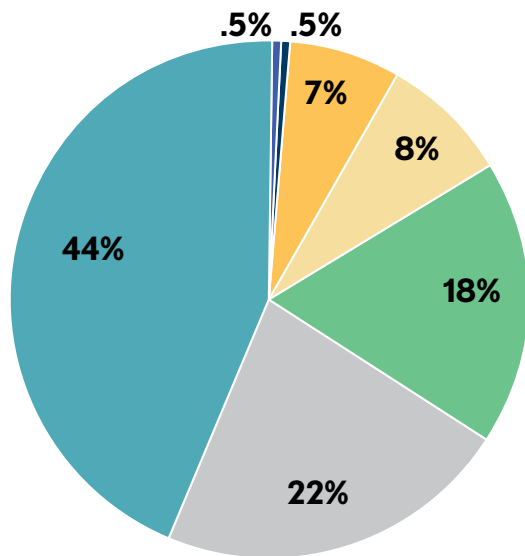
## CREW Network Chapter Giving

- **88%** of our CREW Network chapters contributed a total of **\$126,468**
- **46** of **77** chapters met all three Chapter Challenge “trifecta” challenges
- **66** CREW Network boards fully supported the foundation
- **46** chapters had **50%** of their membership make an individual donation

## Fundraising Event

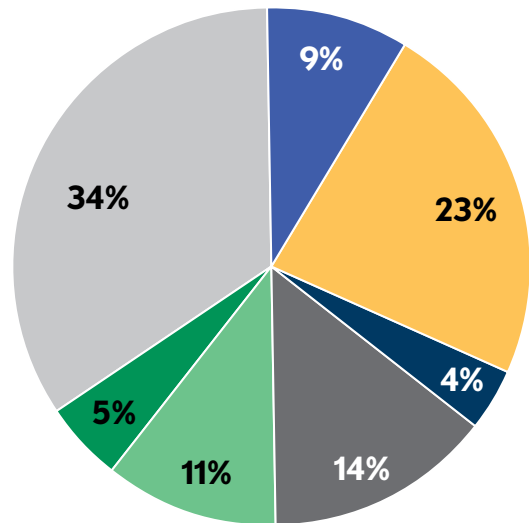
- The annual fundraising event at The Liberace Mansion raised over **\$168,550**

### Total Revenues = \$902,795<sup>1</sup>



Unrestricted Contributions	\$ 393,199	44%
Career Outreach Contributions	2,720	.5%
Industry Research Contributions	2,040	.5%
Scholarship Endowment Contributions	67,857	7%
Annual Scholarship Contributions <sup>2</sup>	69,637	8%
Fundraising Events	166,550	18%
Interest/Miscellaneous Income	200,792	22%
<b>Total</b>	<b>\$902,795</b>	<b>100%</b>

### Total Expenses = \$540,674<sup>1</sup>



Career Outreach	\$ 46,908	9%
Scholarship Awards	122,500	23%
Research Grants	20,000	4%
Other Program Expenses <sup>2</sup>	79,006	14%
Fundraising Events	60,772	11%
Other Fundraising Events	25,996	5%
Management/General Administrative	185,492	34%
<b>Total</b>	<b>\$540,674</b>	<b>100%</b>

<sup>1</sup> Some chapters use CREW Network Foundation as a conduit for their local fundraising efforts. Revenues and Expenses from these events were \$355,501 and \$265,588, respectively, and are not included in the charts presented above.

<sup>2</sup> Amounts for the Annual Scholarship Fund include donations of \$22,530 to CREW Network Foundation Canada, and related administrative expenses of \$2,275.





# Campaigns Boost Member Giving

CREW Network Foundation held two successful fundraising campaigns in 2021 to boost individual giving opportunities and encourage members to pay it forward and support fellow members. The campaigns raised more than \$67,000 with 573 donors participating.

In January, CREW Network Foundation launched the Future of CRE is Female campaign, which surpassed its goal of \$20,000 and raised \$25,379. In May through mid-June, the popular Lift as We Rise campaign raised a total of \$41,746 and was a catalyst for many CREW chapters to achieve the Chapter Challenge “trifecta.” The Chapter Challenge increases awareness of the Foundation’s powerful reach and raises funds for scholarships, industry research and career outreach.

The three components of the Chapter Challenge are gifts from 50% of your membership, 100% of your board, and a chapter donation of at least \$1,000 USD. At the end of the giving year, 46 chapters achieved all three components of the Foundation Chapter Challenge. Kudos to these CREW Network chapters!

- |  |  |  |  |  |
|--|--|--|--|--|
|  |  |  |  |  |
|  |  |  |  |  |
|  |  |  |  |  |
|  |  |  |  |  |
|  |  |  |  |  |
|  |  |  |  |  |
|  |  |  |  |  |
|  |  |  |  |  |
|  |  |  |  |  |
|  |  |  |  |  |



# Chapter Champions 2021

These dedicated leaders promote CREW Network Foundation fundraising efforts by inspiring chapter members and board leadership to support the foundation through individual donations and special chapter events.

**Kiana Akina**  
CREW Denver

**Julie Andrews**  
Cape Fear CREW

**Natalie Bullington Barnes**  
New Orleans CREW

**Natalie Beane**  
IndyCREW

**Barbra Bedwell**  
CREW Nashville

**Elizabeth Berthelette**  
CREW Boston

**Laura Bradley**  
Edmonton CREW

**Julin Burdine**  
CREW Tampa Bay

**Ashley Cagle**  
Triangle CREW

**Cassie Catania-Hsu**  
CREW-Las Vegas

**Elizabeth Chapman**  
CREW Coastal Virginia

**Tiffany Clement**  
CREW Sacramento

**Kristin Conroy**  
CREW Naples/Fort Myers

**Marie Dieckmann**  
CREW Midlands  
South Carolina

**Sharon DiPaolo**  
CREW Pittsburgh

**Florentina Djulvezan**  
CREW Cleveland

**Abby Doench**  
CREW Greater Cincinnati

**Mayva Donnon**  
CREW Greater Philadelphia

**Jennifer Dorgan**  
CREW Inland Empire

**Shonnah Driver**  
CREW Fort Worth

**Katie Flaschar**  
CREW-St. Louis

**Mylene Forest**  
CREW Montreal

**Brittany Freund**  
CREW Iowa

**Pauline Gerry**  
CREW Jacksonville

**Kari Glinski**  
CREW Maryland Suburban

**Jackie Glover**  
CREW Baltimore

**Andrea Gomes**  
CREW CT - The Real  
Estate Exchange

**Lauren Gulley**  
CREW Charleston, Inc.

**Mary Harris**  
CREW Fort Lauderdale/  
Boca Raton

**Stephanie Hill**  
Birmingham CREW

**Leizl Hinajon**  
CREW San Francisco

**Shiloh Holmes**  
CREW Idaho

**Kimberly Hopkins**  
CREW Northern Nevada

**Kevin Hunt**  
CREW Fort Lauderdale/  
Boca Raton

**Karen Hurd**  
CREW Boston

**Savannah Jermance**  
CREW New Mexico

**Heather Keller**  
CREW Greater Cincinnati

**Courtney Keller**  
CREW Orlando

**Marlene Knight**  
CREW Omaha

**Susan Korath**  
CREW NJ

**Shea Kracheck**  
CREW Dallas

**Melissa Kroskie**  
CREW Seattle

**Melissa Lal**  
CREW Tucson

**Gillian Lawrence**  
CREW Calgary

**Kelly Leanos**  
East Bay CREW

**Carrie Leising**  
CREW Greater Akron

**Holly Lennihan**  
CREW DC

**Jessica Levin**  
AZCREW

**Elizabeth Lewis**  
CREW Richmond

**Jennifer Litwak**  
CREW San Diego

**Esin Locke**  
CREW Houston

**Katy Lumpkin**  
CREW Austin

**Cindy MacMillan**  
CREW Vancouver

**Molly Mastin**  
CREW-St. Louis

**Ashley McRae**  
CREW Tampa Bay

**Brandy Natalzia**  
CREW Northern Colorado

**Audreona Nelson**  
CREW Northern Virginia

**Stacia Neugent**  
CREW Charlotte

**Cathy O'Connor**  
CREW-OKC

**Heather Obrecht**  
CREW Detroit

**Lisa Oliver**  
CREW Lehigh Valley

**Sue Paton**  
CREW Calgary

**Jeanne Peck**  
CREW Chicago

**Marilyn Perez-  
Martinez**  
CREW Miami

**Abigail Peterson**  
MNCREW

**Misty Ponce**  
CREW Los Angeles

**Nikki Probst**  
CREW West Michigan

**Sara Pudlosky**  
Wisconsin CREW

**Elise Puritz**  
CREW Orange County

**Alisa Pyszka**  
CREW Portland

**Sandi Quigley**  
CREW Palm Beach/  
Treasure Coast, Inc.

**Denise Raspberry**  
CREW Sacramento

**Cindy Reese**  
IndyCREW

**Abigail Reichling**  
Wisconsin CREW

**Allison Robin**  
CREW New York

**Tillie Ross**  
CREW San Francisco

**Susan Russell**  
PT CREW North Carolina

**Erin Salinas**  
CREW San Antonio

**Alex Schwerdt**  
CREW Utah

**Nellie Shipley Sullivan**  
CREW Atlanta

**Ginger Sotelo**  
CREW Silicon Valley

**Sara Steele**  
CREW Kansas City

**Keri Stewart**  
CREW New Mexico

**Allison Tortorice**  
Toronto CREW

**Danielle Vera**  
CREW San Diego

**Donna Volpone**  
CREW Greater  
Philadelphia

**Amy Welcher**  
CREW Iowa

**Janet Wheeler**  
CREW CT - The Real  
Estate Exchange

**Andrea White**  
CREW Upstate  
South Carolina

**Tara Wright**  
CREW Sask

**Elizabeth Young**  
CREW Inland Empire

**Candace Zang**  
CREW Baltimore



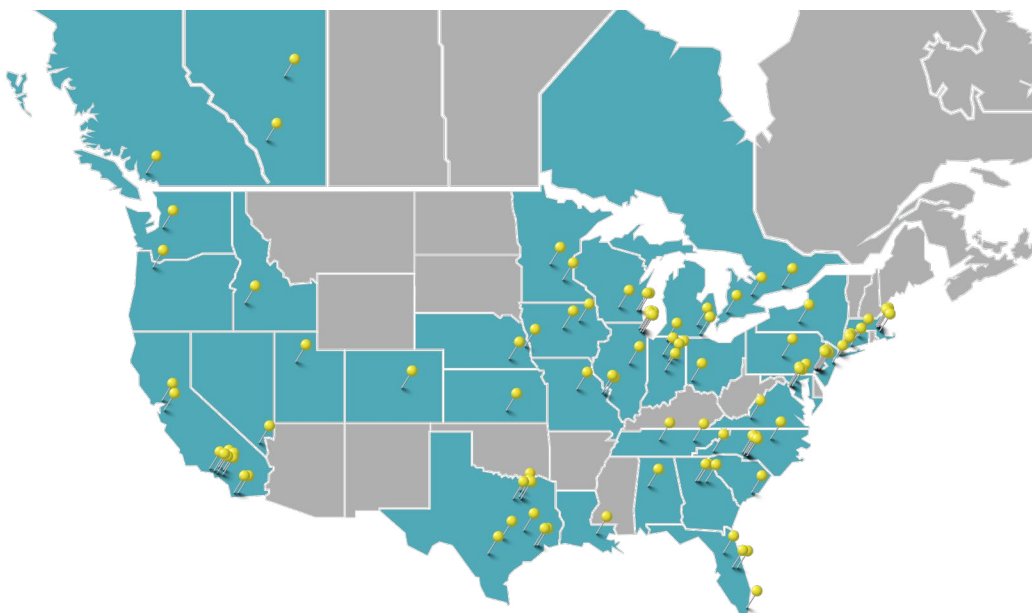
# Scholarship Program Impacts Lives

Since 2009, CREW Network and CREW Network Foundation have awarded scholarships to 196 women totaling \$1,147,500. The CREW Network Foundation Scholarship program is supported by a permanent endowment, as well as contributions to the current annual scholarship fund. The scholarship, which is designed to encourage women to pursue an education that will lead to a career in the commercial real estate industry, is awarded on the basis of academic excellence.

In 2021, CREW Network Foundation granted 25 scholars \$5,000 USD each for tuition and books; an 18-month CREW Network membership; complimentary registration to the 2021 CREW Network Convention; and a six-month mentoring opportunity with a CREW Visionary.



2021 CREW Network Foundation scholars at the Convention in Las Vegas, Nevada. (L-R): Brooke Weisheit, Elisha Schwartz, Allison Evans, Christina Beijani, Julia Passante, Lizbeth Nunez, Oforiwa Agyei-Boaky, Anastasia Gillen, Wan Jun Wu, Hannah Perry, Crischell Bacarro, Jeanette Flory-Sagan, 2021 Foundation Chair



Over the past 11 years,  
CREW Network  
Foundation has provided:

**\$1,147,500** USD

awarded to **196** women in

**36** states/provinces and

**99** universities

# 2021 CREW Network Foundation Scholars

---



## **Oforiwaa Pee Agyei-Boakye**

**Hometown:** Toronto, Ontario

**University and focus of study:** Graduate | University of Minnesota | Environmental

Agyei-Boakye is pursuing a Ph.D. in Geography with a focus on transportation and sustainability. She worked as a Regional Planner at East Alabama Regional Planning Commission and interned with Gonigs Inc., Philadelphia Industrial Development Corporation (PIDC), and Vidaris Inc. in commercial real estate roles. Upon graduation, she aspires to advance sustainable investments by integrating sustainability and resilient transport infrastructure planning into commercial real estate.

---



## **Alexa Abrahamian**

**Hometown:** Milwaukee, Wisconsin

**University and focus of study:** Graduate | University of Southern California | Land Use Planning and Zoning

Abrahamian is in her first year at USC working toward a Master of Urban Planning. She is currently completing an internship at Puget Sound Regional Council, focusing on regional land use planning and economic development in the Seattle area. Abrahamian has also earned two awards for her research on cultural spaces, which she presented at the American Planning Association's national conference. She aspires to use her urban planning education to increase access to commercial real estate for under-resourced communities.

---



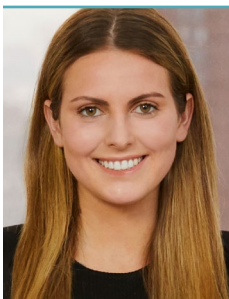
## **Christina Bejjani**

**Hometown:** Houston, Texas

**University and focus of study:** Senior | University of Houston | Finance

Bejjani became involved in commercial real estate after starting her first internship at a small construction company, Texas Blue Topaz, her sophomore year of college. Bejjani is also working towards getting her real estate salesperson license in the state of Texas and is an active member of the real estate organization at UH. Bejjani aspires to specialize in multifamily development and investment. She realizes the importance of the knowledge that goes behind this type of career and believes that her coursework at UH, combined with her work experiences, have set a solid foundation to jump right into the industry upon graduation.

---



## **Heather Bienstock**

**Hometown:** Greenwich, Connecticut

**University and focus of study:** Junior | New York University | Real Estate Development

Bienstock is pursuing an undergraduate degree in Real Estate at the Schack Institute of Real Estate and a Business Studies minor at the Stern School of Business at NYU. Since August 2020, she has been working as a residential real estate salesperson at Corcoran alongside her full course load. In addition, she worked as an investment sales intern at Meridian Capital for a duration of the spring. Bienstock also serves as Treasurer of the Real Estate Club. She aspires to incorporate commercial real estate and development into her career.





### **Caroline Blair**

**Hometown:** Alexandria, Virginia

**University and focus of study:** Graduate | University of California - Berkeley | Real Estate Development

Blair is beginning her graduate studies at University of California Berkeley's Masters in Real Estate Development + Design program. She has previously worked for CBRE as a project manager and for a general contractor specializing in multifamily construction in San Francisco. Upon graduation, Blair aspires to work as an urban developer.



### **Allison Evans**

**Hometown:** Elmhurst, Illinois

**University and focus of study:** Senior | Indiana University | Finance

Evans is a senior at Indiana University studying finance and real estate. She is an Investment Banking Summer Analyst at RBC Capital Markets and has served as the Co-President of the Real Estate Club and founded a Women in Real Estate Club. In the future, she aspires to work in private equity.



### **Anastasia Gillen**

**Hometown:** San Clemente, California

**University and focus of study:** Graduate | Kellogg School of Management at Northwestern University | Real Estate Development

Gillen is a Director of Asset Management at LivCor, where she oversees 15+ multifamily properties located in North Carolina and South Carolina. She was most recently with Greystar and previously spent four years with Redwood Capital Group where she was running a multifamily portfolio across multiple markets. Gillen has extensive experience in several markets and with various institutional partners. When not running real estate, Gillen is pursuing her MBA at Northwestern where she is majoring in finance with a focus on the real estate pathway. As an undergrad at Brown University, she was a soccer student-athlete. She is excited to continue following her passion in multifamily asset management.



### **Shelby Horton**

**Hometown:** Stoneburg, Texas

**University and focus of study:** Senior | Texas A&M University | Architecture

Horton is in her senior year at Texas A&M University studying landscape architecture with a minor in art. She is currently interning for Dunaway Associates in Ft. Worth and has completed internships at Verdant and Land Design Group. As an aspiring licensed landscape architect, Horton aims to reinvigorate urban environments with sustainable landscapes.

*“At my school, there’s only a couple other females in our program. It’s great to see other females who are super successful and we can see what we can become.”*

Allison Evans | Indiana University



### **Kaeley Ipson**

**University and focus of study:** Graduate | Cornell University | Engineering

Ipson is a first-year graduate student at Cornell University studying engineering management, specializing in real estate and construction management. She has completed five internships in commercial real estate, working for Bohler Engineering, a civil engineering firm. Ipson has also served as President of the Civil Engineering Honor Society and has maintained an Undergraduate Resident Fellow leadership position. She aspires to eventually obtain her professional engineering license and to continue to work within the field of land development.



### **Katherine Kaderabek**

**Hometown:** Mickleton, New Jersey

**University and focus of study:** Senior | Catholic University of America | Architecture

Kaderabek is in her senior year as an Architecture student at The Catholic University of America. In addition to her major, she holds an English minor and is a proud, published author of *Unravel* by Kat Kade. She has worked as an architecture intern assisting on commercial renovations, which has sparked her interest in the field of commercial real estate.

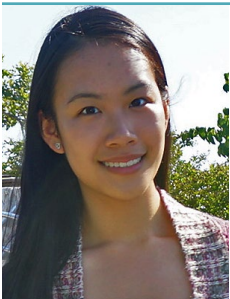


### **Clara Kobashigawa**

**Hometown:** Lafayette, California

**University and focus of study:** Senior | University of Washington | Market Research

Kobashigawa is a senior at the University of Washington studying communications and entrepreneurship. She has worked as a marketing and DEI intern at multiple technology companies in the Seattle area. She is a UW tour guide, a FIG (first year interest group) leader, and hosts a podcast for the American Marketing Association. In 2020, she won the CREW Seattle Impact Award Scholarship. Kobashigawa took her interest to the next level by founding an alternative real estate company focused in afterlife services, raising \$27,500 in funding in June 2021.



### **Si Wei Adeline Leung**

**Hometown:** Sunnyvale, California

**University and focus of study:** Senior | Berkeley University | Architecture

Leung is a senior at University of California, Berkeley majoring in architecture with a minor in structural engineering. She has interned in architecture and engineering firms as well as in city government, and aspires to become a specialist in high performing, sustainable building and infrastructure design.

*“I want to be able to design very high efficiency and sustainable buildings with my engineering degree. The CREW Network Foundation scholarship basically gave me more confidence that I was doing something out of the box.”*

Amy Wu | University of British Columbia



---

### **Emily Mitra**

**Hometown:** Kahului, Hawaii

**University and focus of study:** Senior | California Baptist University | Construction Management/General Contracting

Mitra is one year away from completing her undergraduate degree in Construction Management at California Baptist University. Last summer, Mitra was a summer engineer intern with Goodfellow Bros. LLC, and in summer 2021 is working as an intern for the County of Maui Public Works Engineering Division. Mitra aspires to move back to Maui and work towards becoming a project manager and eventually start her own company renovating existing structures.



---

### **Lizbeth Nunez**

**Hometown:** Miami, Florida

**University and focus of study:** Graduate | The Wharton School, University of Pennsylvania | Real Estate Development

Nunez is an MBA student at The Wharton School, where she leads admissions and external affairs as vice president of the graduate real estate club. She is a Samuel Zell and Robert Lurie Real Estate Center award recipient and a Bendheim Social Impact Fellow. Leveraging a background in finance and real estate leadership, she aspires to improve communities through development and investment.



---

### **Julia Passante**

**Hometown:** Norwood, New Jersey

**University and focus of study:** Senior | New York University | Consulting / Real Estate Development

Passante is in her final year as a student-athlete at New York University. She is pursuing an undergraduate bachelor's degree of Science in Real Estate through The Schack Institute of Real Estate. She is also earning a minor in Business Studies. She has worked as an intern in KeyBank's renowned Real Estate Capital Division. She aspires to apply her knowledge and bring her leadership skills to an investment sales, consulting, development, or global corporate real estate role in the future.



---

### **Hannah Perry**

**Hometown:** Derry, New Hampshire

**University and focus of study:** Senior | Wentworth Institute of Technology, University of Boston | Architecture

Perry is entering her senior year as a student at Wentworth Institute of Technology studying architecture. Working as an intern designer, she has completed two internships with Saam Architecture in Boston. Perry also serves as treasurer for her school's chapter AIAS Freedom by Design Club. She aspires to become an architect and is most interested in sustainable design.



---

### **Vanessa Quezada**

**Hometown:** Miami, Florida

**University and focus of study:** Senior | University of Miami | Engineering

Quezada is in her senior year as a student at the University of Miami studying industrial engineering with a minor in economics and finance. She works part time as a real estate agent and as a building manager of six residential units. She aspires to one day have her own company incorporating what she is learned from engineering and finance to the real estate industry.





---

### **Caroline Scheuermann**

**Hometown:** Madisonville, Louisiana

**University and focus of study:** Junior | Louisiana State University | Architecture

Scheuermann is approaching her final year as a student at Louisiana State University studying Architecture, with a minor in Architectural History. She currently holds a job as a project coordinator at Architectnix, a commercial design-build architecture firm alongside her rigorous coursework as a Bachelor of Architecture candidate. She aspires to combine principles of both architectural design and commercial real estate to bring neglected places with rich history and culture back to life.



---

### **Elisha Schwartz**

**Hometown:** Bristow, Indiana

**University and focus of study:** Junior | IUPUI, Indiana University-Purdue University Indianapolis | Real Estate Development

Schwartz is a junior at IUPUI obtaining her undergraduate degree in construction management with a minor in business. She is working as an intern within construction services at Buckingham Companies in downtown Indianapolis. Schwartz also serves as the Kelly Indianapolis Student Government (KISG) representative for the Real Estate Club at IUPUI. She aspires to incorporate real estate development with her current degree and further her career in development.



---

### **Kendra Teune**

**Hometown:** Downers Grove, Illinois

**University and focus of study:** Senior | Purdue University | Architecture

Teune is beginning her senior year at Purdue University where she is working toward her Bachelor of Science in Landscape Architecture. She has worked as an intern at a civil engineering/landscape architecture firm in land development for the past year and will wrap up her final year as President of the Women's Volleyball Club. After graduation she aspires to incorporate green spaces and practices into commercial real estate developments.



---

### **Sharon Velasquez**

**Hometown:** Los Angeles, California

**University and focus of study:** Graduate | Massachusetts Institute of Technology (MIT) | Economic Development

Velasquez is a dual degree candidate at MIT, pursuing an MBA at the Sloan School of Management and a Master's in City Planning at the School of Architecture + Planning. Passionate about equitable economic development, she hopes to leverage commercial real estate and finance to build cities where communities of all backgrounds can thrive. Before MIT, Velasquez worked at an economic development think tank where she collaborated with major financial institutions to drive targeted investments into underserved communities. She is currently a Graduate Summer Associate at Mass Development, Massachusetts' economic development and finance agency, where she helps develop real estate and financing strategies that stimulate the supply of affordable and workforce housing across the Commonwealth.



---

### **Julia Verbrugge**

**Hometown:** Basking Ridge, New Jersey

**University and focus of study:** Graduate | University of Pennsylvania | Economic Development

Verbrugge is a second-year Master of city planning student studying community and economic development at the University of Pennsylvania. Prior to graduate school, she worked in real estate and urban development at Google, and she now works at Philadelphia's economic development corporation, PIDC. She aspires to lead equitable economic development programs.



---

### **Cathy (Tzu) Wang**

**Hometown:** South Pasadena, California

**University and focus of study:** Senior | University of Southern California | Engineering

Wang is an undergraduate senior at USC with a major in Civil Engineering, an emphasis in Construction Management and a minor in Business Administration. She has worked as a project engineer intern for both Healy Tibbitts Builders and Pankow Builders. She aspires to be a construction project manager.



---

### **Brooke Weisheit**

**Hometown:** Henderson, Nebraska

**University and focus of study:** Senior | University of Nebraska-Omaha | Property Management

Weisheit is in her final year at the University of Nebraska-Omaha obtaining a Bachelor of Science degree in Business Administration with concentrations in Banking and Financial Markets, Business Finance, Investment Science and Portfolio Management, and Real Estate and Land Use Economics. She has worked as a Real Estate intern for a Fortune 200 company.

Upon graduation, she aspires to pursue a career in Property Management. Weisheit also serves as Vice President of Rho Epsilon at the University of Nebraska-Omaha.



---

### **Wan Jun (Amy) Wu**

**Hometown:** Calgary, Alberta

**University and focus of study:** Senior | University of British Columbia | Engineering

Wu is in her final year of Integrated Engineering with a major study in mechanical engineering and a minor in electrical engineering at the University of British Columbia. Since January 2021, she has been working at Integral Group as an Engineering Intern. Wu was a project leader of the "Bubble Helmet" product line at COSMIC Medical. She aspires to engineer high-performance building designs for a sustainable future.



# LINDA HOLLEMON Scholarship Endowment

CREW Network and CREW Network Foundation established the CREW Network Foundation Scholarship Endowment fund in 2008. Donations to this endowment fund support the long-term growth and impact of scholarships for female students in commercial real estate programs

In 2020, the CREW Network Foundation Scholarship Endowment was renamed to honor CREW Network founder, first president and CEO Linda Hollemon. Following her retirement as CREW Network CEO in 2005, Linda remained a strong supporter of the Foundation and was inducted as a CREW Visionary in 2007. By naming the scholarship endowment in her honor, we recognize her legacy in perpetuity and acknowledge through future generations the fundamental impact of Linda’s leadership.

## VISIONARY FOUNDERS | 2021 REPRESENTATIVES



Nancy Olah  
Wendy Bell



Carole Bernard-Piper  
Beverly Woodall  
Marilyn Acheson  
Christina Quinones



Susan Lee  
Barbara Price  
Yvonne Baker  
Gabrielle Best Husband



Sarah Giardini  
Amanda Zimmerman  
Danielle Vera

## 2021 Campaigns Bring Success

In January 2021, CREW Network Foundation launched the **Future of CREW is Female** campaign. The campaign surpassed its goal of \$20,000 and **raised a total of \$25,379**.

In May 2021, CREW Network Foundation launched the **Lift as We Rise** campaign. The campaign surpassed its goal of \$20,000 and **raised a total of \$41,746**. The funds for this campaign went to support CREW Network Foundations Greatest Needs Fund and Canadian scholarship fund.

As of December 31, 2021, the endowment fund totaled over \$2.6 million, with \$1.6 million designated by the board of directors and over \$1 million of donor-designated contributions.

## Founders

The following individuals and CREW Network chapters are generous founders of the CREW Network Foundation Scholarship Endowment. Each founder chapter holds one (1) seat on the Scholarship Selection Committee, which reviews and selects the scholars to be recommended to the CREW Network board.

## CHAMPION FOUNDERS | 2021 REPRESENTATIVES

Diane Butler	self
Jane Smith	self
CREW Atlanta	Janelle Beasley Jenifer Wright
CREW Austin	Alexis Michael
CREW Chicago	Tiffanie Ing
CREW Denver	Lauren Fry
CREW Houston	Cristina Esquivel Carolyn Johnson
MNCREW	Carrie Eggleston Heather Weerheim
CREW Orange County	Joanne Lucas
CREW Greater Philadelphia	Dina Miller
CREW Seattle	Sarah Kadletz
CREW Silicon Valley	Nancy Brandt Sabine Zimmerhansl
CREW Vancouver	Alicia Mackay





# CREW NETWORK FOUNDATION CREW Visionaries Donor Program

The CREW Network Foundation Visionaries program was established in 2007 to recognize donors for their cumulative giving to CREW Network Foundation. Participation in the program acknowledges an individual's commitment to support CREW Network Foundation's mission. When individuals reach \$10,000 in cumulative lifetime giving\*, they are inducted into the Visionaries program. Each inductee is awarded an exclusive, numbered gold lapel pin. Each subsequent \$10,000 in cumulative lifetime giving is recognized with the addition of a diamond to the individual's pin.



## 2021 Inductees and Diamonds

We appreciate the leadership of our Visionaries and all they have done to advance women. The following individuals were inducted into the CREW Network Foundation Visionaries program in 2021:



83<sup>RD</sup> INDUCTEE  
**Julie Kriegel**  
CREW-OKC



84<sup>TH</sup> INDUCTEE  
**Anne Bengé**  
CREW San Diego



85<sup>TH</sup> INDUCTEE  
**Kathy Allgier**  
CREW DC



86<sup>TH</sup> INDUCTEE  
**Debra Gilbreath**  
CREW Houston



87<sup>TH</sup> INDUCTEE  
**Barbi Reuter**  
CREW Tucson



88<sup>TH</sup> INDUCTEE  
**Tiffany English**  
CREW San Diego



89<sup>TH</sup> INDUCTEE  
**Christine Gorham**  
CREW Atlanta



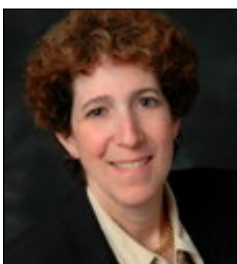
90<sup>TH</sup> INDUCTEE  
**Brenda Karp**  
CREW Richmond



91<sup>ST</sup> INDUCTEE  
**Talynn Otsuki**



92<sup>ND</sup> INDUCTEE  
**Stephanie Duncan**  
CREW DC



93<sup>RD</sup> INDUCTEE  
**Joan Rosoff**  
CREW Greater Philadelphia

The following individuals received diamonds in 2021:

- **Kris Beason**, CREW Seattle  
First diamond
- **Wendy Mann**, CREW Network  
First diamond
- **Tori Robinson**, CREW Los Angeles  
First diamond
- **Kim Addy**, CREW Seattle  
Second diamond
- **Jeanette Flory-Sagan**, CREW Seattle,  
AZCREW, CREW DC, Second diamond
- **Cheryl Hardt**, CREW New Mexico  
Second diamond
- **Conilee Hennersdorf**, CREW Dallas  
Second diamond
- **Vicki Summerall**, CREW Dallas  
Third diamond
- **Malcolm Stewart**, CREW Houston  
Third diamond

\* Cumulative Life Giving Eligibility - Click [here](#) for more detailed information.

# CREW NETWORK



## Thank you to our generous CREW Visionaries

- |                         |                          |                               |
|-------------------------|--------------------------|-------------------------------|
| Kim Addy ★              | Mollie Fadule            | Michele O'Connor              |
| Marianne Ajemian ★      | Jeanette Flory-Sagan ★★  | Nancy Olah                    |
| Kathy Allgier           | Calvin "Cal" Frese, Jr.  | Patricia "Lynny" Osenbaugh ★★ |
| M. Maureen Anders ★★ ★  | Roberta B. Fuhr          | Talynn Otsuki                 |
| Linda S. Andreozzi      | Debra Gilbreath          | Janice Paine                  |
| Gail S. Ayers ★         | Bonnie S. Gottlieb ★     | Diana L. Parker ★             |
| Adrienne Bain ★         | Vicky Gunning            | Tara Pjurko                   |
| Laurie Baker            | Cheryl Hardt ★★          | Karen Priesman                |
| Kris Beason ★           | Jodi Hartley             | Jennifer A. Redner            |
| Alison Beddard          | Conilee Hennersdorf ★★   | Claire J. Roberts             |
| Anne Benge              | Sharon Herrin ★★ ★       | Tori Robinson ★               |
| Brenda Bodian ★         | Susan Hill               | Glenn Rufrano                 |
| Gayle Bourdeau ★        | Linda G. Hollemon ★      | Karin Schulz ★                |
| Suzanne Brasuell        | Irene L. Hosford ★       | MaryBeth Shapiro              |
| Regina Bruce ★★         | Victoria L. Joly         | Jill Sharif                   |
| Ginger Bryant ★★        | Brenda Karp              | Jane Snoddy Smith ★★ ★★ ★★    |
| B. Diane Butler ★★ ★★   | Cynthia Emerson Keefer ★ | Kelley J. Smith               |
| Armin Cantini           | Lori E. Kilberg          | Elizabeth E. Solender         |
| Jennifer Carey          | Julie A. Kimble          | Stephanie Sprenkle            |
| Kathy Carr              | Julie Kriegel            | Malcolm Stewart ★★            |
| Barbara Champoux ★      | Beth Lambert -Saul ★     | Victoria Summerall ★★ ★       |
| Christine Chipurnoi ★   | Anne DeVoe Lawler ★★     | Sara Terry                    |
| Faith Hope Consolo      | H.F. "Gerry" Lenfest     | Sara L. Todd                  |
| Dottie Cunningham ★★ ★★ | Judith D. Levine         | Sally French Tyler ★★         |
| Lou Ann Dent            | Jenifer Litwak           | Margaret Van Meter            |
| Collete English Dixon ★ | Cindy Malone ★★ ★        | Gerry Ring Waltz              |
| Angela E. Dugick        | Wendy Mann ★             | Goldie Wolfe Miller           |
| Stephanie Duncan        | Jean M. Meilinger        | Valerie L. Wood               |
| Tiffany English         | Holly Neber              | Cindy Wozny-Carl ★            |
| Tina A. Essegian        | Judy Nitsch ★★           | Ann Waeger                    |

★ Denotes diamonds for each additional \$10,000 given to CREW Network Foundation



# CREW NETWORK FOUNDATION Annual Fundraiser

On Sept. 29, 2021, CREW Network Foundation hosted its annual fundraiser at The Liberace Mansion in Las Vegas—and it was an absolute success! It achieved a record high for tickets sold, and underwriter support and total income. A total of \$168,550 USD was raised through the event. Thank you to our 58 generous event underwriters and all who purchased tickets.





# Thank You 2021 Underwriters

## INDUSTRY ICONS (\$10,000)



**Malcolm Stewart**  
CREW Houston

## COMPOSERS (\$5,000)



**Debra Gilbreath**  
CREW Houston



**Tori Robinson**  
CREW Los Angeles

## MOVIE STARS (\$2,500)



**Kim Addy**  
CREW Seattle



**Diane Butler**  
CREW Dallas



**Barbara Champoux**  
CREW Chicago



**Christine Chipurnoi**  
CREW New York



**Alyssa Dangler**  
CREW Coastal Virginia



**Jeanette Flory-Sagan**  
CREW Seattle



**Vicky Gunning**  
CREW Dallas



**Sharon Herrin**  
CREW Dallas



**Nichole Kelley**  
CREW Charlotte



**Cindy Malone**  
CREW Chicago



**Wendy Mann**  
CREW Network



**Holly Neber**  
CREW East Bay



**Nancy Olah**  
CREW Charlotte



**Patricia Osenbaugh**  
CREW Houston



**Barbi Reuter**  
CREW Tucson



**Cindy Wozny-Carl**  
CREW Chicago



## PERFORMERS (\$1,000)

**Adrienne Bain**, CREW Charlotte  
**Laurie Baker**, CREW Houston  
**Kris Beason**, CREW Seattle  
**Gayle Bourdeau**, CREW Boston  
**Ginger Bryant**, CREW San Francisco  
**Kathy Carr**, CREW Austin  
**Jennifer Chambers**, CREW Detroit  
**Stephanie Duncan**, CREW DC  
**Collete English Dixon**, CREW Chicago  
**Mollie Fadule**, CREW Seattle  
**Heather Fox**, AZCREW  
**Christine Gorham**, CREW Atlanta  
**Michelle Goudeaux**, CREW Silicon Valley

**Cheryl Hardt**, CREW New Jersey  
**Coni Hennersdorf**, CREW Dallas  
**Brenda Karp**, CREW Richmond  
**Julie Kriegel**, CREW Seattle  
**Lori Hill**, CREW Seattle  
**Anne Lawler**, CREW Seattle  
**Jennifer Litwak**, CREW San Diego  
**Marie McLucas**, CREW Charlotte  
**Judith Nitsch**, CREW Boston  
**Niki Norton**, CREW Palm Beach/  
 Treasure Coast  
**Michele O'Connor**, CREW New York  
**Allison Rabin**, CREW Chicago

**Claire Roberts**, MNCREW  
**Karin Schulz**, CREW Houston  
**Shawn Rush**, CREW Seattle  
**Elizabeth Solender**, CREW Dallas  
**Stephanie Sprenkle**, CREW  
 Greater Philadelphia  
**Victoria Summerall**, CREW Dallas  
**Sara Terry**, CREW Dallas  
**Krone Weidler**, CREW Tampa Bay  
**Angelia Wesch**, CREW Seattle  
**Karen Whitt**, CREW DC  
**Lyndsy Yim**, BirminghamCREW

# 2021 CREW Network Foundation Organization Donors

## PLATINUM SUPPORTERS | \$15,000+

CREW Chicago | CREW Houston

## GOLD SUPPORTERS | \$10,000 - \$14,999

## SILVER SUPPORTERS | \$5,000 - \$9,999

CREW Charlotte | MNCREW | CREW San Diego | VEREIT Inc.

## BRONZE SUPPORTERS | \$2,500 - \$4,999

CREW Calgary | CREW Baltimore | CREW DC | CREW Detroit  
 CREW Greater Philadelphia | CREW Seattle | CREW Tampa Bay | SIOR

## COPPER SUPPORTERS | \$1,000 - \$2,499

<p>AZCREW          BirminghamCREW          Cape Fear CREW, Inc.          Charity Golf International          Citizens Charitable          Foundation          CREW Atlanta          CREW Austin          CREW Boston          CREW Cleveland          CREW Coastal Virginia          CREW CT - The Real          Estate Exchange          CREW Dallas          CREW Denver          CREW East Bay          CREW Fort Lauderdale/          Boca Raton          CREW Fort Worth, Inc.          CREW Greater Akron          CREW Greater Cincinnati          CREW Idaho          CREW Inland Empire          CREW Iowa          CREW Jacksonville          CREW Kansas City</p>	<p>CREW Los Angeles          CREW Maryland          Suburban          CREW Miami          CREW Montreal          CREW Naples/Fort Myers          CREW Nashville          CREW New Mexico          CREW New York          CREW NJ          CREW Northern          Colorado          CREW Northern Nevada          CREW Northern Virginia          CREW Omaha          CREW Orange County          CREW Orlando          CREW Palm Beach/          Treasure Coast, Inc.          CREW Pittsburgh          CREW Portland          CREW Richmond          CREW Sacramento          CREW San Antonio          CREW San Francisco          CREW Silicon Valley</p>	<p>CREW Tucson          CREW Upstate South          Carolina          CREW West Michigan          CREW-Las Vegas          CREW-OKC          Edmonton CREW          Equinox Development          JE Dunn Construction          Company</p>	<p>Kathy Watkinson Ivins          Endowment of The          Community Foundation          Serving Richmond &amp;          Central Virginia          Kessler Collins P.C.          New Orleans CREW          Redwood Capital Group, LLC          RioCan REIT          RJM Construction          Stream Realty Partners, LP          Triangle CREW          Wisconsin CREW</p>
--	--	---	--



Participants at a CREW Careers event hosted by Toronto CREW

## 2021 CREW Network Foundation

# Individual Donors

### POWER CONTRIBUTOR | \$2,500+

Mercedes Angell  
Jeanne Armstrong  
Theresa Bayer  
Roslyn Bazzelle  
Laura Bellotti Cardillo  
Anne Bengé  
Lori Buhs  
Yvonne Chen  
Cindy Cohn  
Frances Delgorio  
Pamela Donaldson

Cheryl Elgart  
Susan Felts  
Samantha Flaherty  
Carol Fortenberry  
Kathy Gigac  
Teresa Giltner  
Jessica Harcrow  
Greg Henderson  
Peggy Henderson  
Catherine House  
Marcie Jensen

Dayna Karron  
Cincha Kostman  
Jill McCarthy  
Tyler McKee  
Betsy Miller  
Dina Miller  
Holly Neber  
Sarah Ohlmeier  
Patricia Pinto  
Twyla Purschke  
Robin Reimold

Gretchen Richardson  
Jessica Rossi  
Cindy Santilena  
Diana Scatliffe  
Linda Simmons  
Victoria Summerall  
Elizabeth Teske  
Robert Thornburgh  
Liisa Warden  
Melissa Wilhelm

### PRINCIPAL CONTRIBUTOR | \$1,500 - \$2,499

M. Maureen Anders  
Wendy Berger  
Ernest Brown  
Gina Brown

Janice Brunson  
Karen Farrell  
Michelle Jarvis

Stephen Sanders  
Michael Schrum  
Heather Van Erden

Erica Vanover  
Jonathan Williams  
Olivia Wirth

### ASSOCIATE CONTRIBUTOR | \$500 - \$1,499

Holly Alexander  
Novella Allen  
Michelle Anderson  
Carrie Gartside Anthony  
Laurie Arnold  
Ashley Aust  
Laura Bachman  
Sara Bago  
Adrienne Bain

Lani Baker  
Viveca Bissonnette  
Cecily Bolding  
Miriam Brodie  
Kim Brown  
Emily Brun  
Jamie Buckley  
Cindy Campbell  
Lindsey Cannon

Kathy Carr  
Barbara Chirinos  
Erika Clarke  
Amy Clement  
Brenda Compton  
Dianne Crocker  
Sarah Cunningham  
Shonda Decker  
Kelli Dickerson  
Mary Dunleavy  
Vicki Facto  
Andrea Fazendin  
Jennifer Fox  
Savina Garcia  
Nori Gleeman  
Stacie Goeddel  
Melissa Gombert  
Michelle Goode  
Brian Guttman  
Robin Haddock  
Genevieve Hanson  
Susanne Hanson

Cheryl Hardt  
Rachel Harms  
Kristen Hess  
Lauren Hoag  
Whitney Hodges  
Stacy Hunt  
Sallie Jarosz  
Mary Jury  
Hilary Kane  
Eliza Karagezian  
Tammy Kelly  
Larry Kendall  
Anna Kennedy  
Jennifer Kinsey  
Gweneth Kovar  
Krista Lachelt  
Libby Lassiter  
Anne Lawler  
Katie Martinovic  
Angela Maverick  
Mary McGetrick  
Jyoti Mehta



Participants at a CREW Career event hosted by CREW Dallas



## ASSOCIATE CONTRIBUTOR | \$500 - \$1,499 (continued)

Nicole Morse  
Alec Munoz  
Nina Murrell  
Amy Nieva  
Jennifer Nyquist  
Talynn Otsuki  
Julie Paul  
Nancy Powell

Alisa Pyszka  
Jennifer Raike  
Allison Robin  
Mary Salas  
Morgan Scheibel  
Cathy Schmidt  
Abby Schmit  
Karen Selnar

Kelly Sklar  
Donna Smith  
Emily Smith  
Kelly Smith  
Rebecca Smith-  
Zakowicz  
Stephanie Sprengle  
Ashley Stiles

Lynn Stith Bennett  
Amanda Sullivan  
Christine Verfurth  
Elizabeth Voltz  
Geoff Warcholik  
Amy Welcher  
Melissa Wiechman  
Mary Wilken

## LEAD CONTRIBUTOR | \$100 - \$499

Victoria Abbasi  
Josephine Aberle  
Maranda Adams  
Kim Addy  
Linda Adler  
Kathleen Ahern  
Kiana Akina  
Kylie Aldridge  
Hope Alexander  
Lauren Alexander  
Tamara Alexander-  
Johnson  
Kathleen Allgier  
Ivette Alvarado  
Cristina Anderson  
Jennifer Anderson  
Kelly Anderson  
Shantel Andrews  
David Antonelli  
Rose Arck  
Rose Arevalo  
Stephanie Friese Aron  
Patricia Arsenault  
Lisa Ashworth  
Lorna Auerbach  
Bridget Aumell  
Lolly Avant  
Elena Ayers  
Lacey Bacchus  
Sally Bach  
Amy Bailey  
Alexis Baker  
Laurie Baker  
Reshell Baldini

Tanya Ball  
Laura Barbero-Buffa  
Kathryn Barker  
Debra Barnes  
Kim Barrow  
Jen Bartholomew  
Bonnie Basler  
Elizabeth Bastian  
Andrea Beard  
Paula Beasley  
Kris Beason  
Leslie Becker  
Alison Beddard  
Wendy Bell  
Angel Benavidez  
Julie Benezet  
Denise Bennett  
Vicki Berman  
Steph Bertholf  
Michele Betancourt  
Lisa Bittner  
Shari Bjork  
MaryAnn Blake  
Heidi Blau  
Andrea Bleau  
Wendy Feldman Block  
Rhonda Bly  
Mareena Bobey  
Rebecca Bodemann  
Benjamin Bojda  
Michelle Bolt  
Valerie Bordelon  
Jodi Borges-Bradley  
Stacey Boston



*Participants and mentors at a UCREW event hosted by CREW Orlando*

Mitzi Boswell  
Gayle Bourdeau  
Korinne Bouwhuis  
Leanne Bowen  
Katie Bowman  
Alan Boyd  
William Boyle  
Jacqueline Bozzuto  
Lannin Braddock  
Kevin Brady  
Elena Branca  
Gayle Brand  
Tonya Brandon  
Nancy Brandt  
Suzanne Brasuell  
Ashley Breakfield  
Lyn Bressler  
Brian Brewster  
Kathleen Briscoe  
Tabitha Brittain  
Deborah Brockley

Janet Brooks  
Rachel Brooks  
Emily Brophy  
Kathleen Dockery Brouwer  
Linda Bruce  
Ginger Bryant  
Cindy Buchanan  
Lisa Bufkin  
Jacqueline Buhn  
Addie Bunting  
Kellie Bunyi  
Karla Burck  
Andria Burke  
Beth Burke  
Paulette Burns  
Emily Butler  
Diane Butler  
Jessica Caldara  
Marcia Camarda  
Chelsee Camero-Lintz  
Kimberly Cameron

**LEAD CONTRIBUTOR** | \$100 - \$499 (continued)

Melissa Campanella  
 Joanne Campanile  
 Jennifer Carey  
 Teresa Carlson  
 Molly Carroll  
 Kate Carter  
 Mary Carter  
 Rene Carter  
 Esther Carter-Day  
 Betty Castro  
 Tanja Castro  
 Jennifer Chambers  
 Barbara Champoux  
 Elizabeth Chapman  
 Lisa Chappell  
 Michelle Charbonneau  
 Susana Chavez  
 Quan Che  
 Anita Chen  
 Christine Chipurnoi  
 David Choo  
 Wendy Christenson  
 Amanda Christie  
 Jacki Christopher  
 Stephanie Chung  
 Dawn Cica  
 Kimberly Clark  
 Sara Clark  
 Tameka Clark  
 Chiara Clatterbuck  
 Michelle Mills Clement  
 Kathleen Cloud  
 Alba Colavitti  
 Angie Cole  
 Cortney Cole

Danita Coleman  
 Joy Coleman  
 Lori Coleman  
 Melissa Collar  
 Dana Compton  
 Ann Cone  
 Kelly Connery  
 Kristin Conroy  
 Skye Cook  
 Audrey Correa  
 Kathleen Coxe  
 Ann Crenshaw  
 Bo Crouse-Feuerhelm  
 Ana Cruz  
 Jhoie Cruz  
 Miranda Cruz  
 Dotti Cunningham  
 Katrina Cupp  
 Anita Dabney  
 Robert Dahlke  
 Alyssa Dangler  
 Janelle Daniel  
 Amit Egan Datwani  
 Kena David  
 Jessica Davidson  
 Courtney Davis  
 Early Davis  
 Abigail Day  
 Raedun De Alba  
 Miranda Dean  
 Rebecca Dean  
 Michelle DeCarlo  
 Megan Dellapina  
 Anne Desormier-  
 Cartwright

Samantha Dewan  
 Mark Dickenson  
 Annemarie DiCola  
 Collete English Dixon  
 Jackie Dodd  
 Michelle Dodge  
 Abby Doench  
 Kirsten Dolan  
 Nathan Donato-Weinstein  
 Mark Doran  
 Jennifer Dorgan  
 Doris Drain  
 Lynette Dreitz  
 Angela Drumm  
 Shay Dugan  
 Kate Duncan  
 Stephanie Duncan  
 Debra Dupes  
 Angie Earlywine  
 Patricia Earnest  
 Lauri Easley  
 John Echols  
 Salla Eckhardt  
 Jo Economaki  
 Andie Edmonds  
 Beth Edwards  
 Maria Elefante  
 Carol Ellis-Cutler  
 Kimberly Enders  
 Tiffany English  
 Kelly Ennis  
 Susan Esker  
 Raffy Espiritu  
 Donna Evers-Southard  
 Brenda Ezell  
 Kathleen Fahy  
 Ileana Fay  
 Rochelle Federal  
 Jodi Fedor  
 Hilary Fentress  
 Lyan Fernandez  
 Debora Field  
 Leslie Fisk  
 Sheena Fitzpatrick  
 Casey Flannery  
 Carolyn Fletcher

Jeanette Flory-Sagan  
 Brandi Floyd  
 Chris Flynn  
 Claudia Folzman  
 Farrah Forbes  
 Larisa Forester  
 Beverly Fortner  
 Cassandra Foster  
 Jack Fraker  
 Tracie Frazier  
 Ashley Frysingher  
 Lindsey Fudge  
 Tracy Taylor Fullerton  
 Brooke Gabrielsen  
 Peter Gaeta  
 Michelle Gail  
 Gigi Galbraith  
 Kathryn Gallagher  
 Paul Galmarini  
 Leslie Garcia  
 Laura Garrett  
 Noelle Garsek  
 Jaslyn Garza  
 Julie Gasque  
 Kathleen Gatton  
 Jenna Geigerman  
 Suman Gera  
 Kim Ghez  
 Debra Gilbreath  
 Elise Giles  
 Soo Gilvarry  
 Jill Gleba  
 Dana Kreis Glencer  
 Melissa Glover  
 Lynn Goessling  
 Debra Goldstein  
 Meryl Gonchar  
 Christine Gorham  
 Bonnie Gottlieb  
 Michelle Goudeaux  
 Shelly Gouin  
 Arnold Grant  
 Sue Gravett  
 Marsha Gray  
 Michelle Greco  
 Stephanie Gressley  
 Laurie Griffith



Participants of CREW Austin's CREW Career event

Lisa Gualco  
 Vicky Gunning  
 Laurie Gustafson  
 Alicia Gutierrez  
 Michele Gutierrez  
 Christine Hadman  
 Kristen Hagen  
 Theresa Hahn  
 Pauline Hale  
 Melissa Hall  
 Karen Halpert  
 Lindsey Halter  
 Cynthia Hammond  
 Katrine Hansen  
 Marilyn Hansen  
 Beth Harrelson  
 Lynn Harris  
 Mary Harris  
 Paula Harris  
 Liza Hart  
 Tracey Hartford  
 Pamela Hartsell  
 Janice Hartsock  
 Tracey Hatcher  
 Darlene Hayes  
 Laura Haynes  
 Melanie Haynes  
 Brittany Heath  
 Catherine Heath  
 Elizabeth Hedrick  
 Marcy Helfand  
 Janet Helms  
 Conilee Hennersdorf  
 Penny Heritage  
 Kelli Herman  
 Sharon Herrin  
 Kristy Hess  
 Andrea Heuson  
 Pat Hildebrandt  
 Lori Hill  
 Susan Hill  
 Heather Hoffman  
 Joanna Hoffschneider  
 Kimberly Hogan  
 Wendy Hoier  
 Moira Holland

Shiloh Holmes  
 Kye Holtan-Brown  
 Brenna Hooker  
 Jessica Hoover  
 Carol Horne Penn  
 Polly Houck  
 Jenna Howard  
 Tracy Howren  
 Caroline Hudson  
 Michelle Hudson  
 Christine Hughes  
 Joan Humes  
 Karen Hurd  
 Amy Hurst  
 Andrea Huseman  
 Laurie Hutner  
 Cecilia Hyun  
 Olena Ivanenko  
 Sue Jacobson  
 Molly Jans  
 Jennifer Janson  
 Katelyn Jeffcoat  
 Coni Jenkins  
 Michelle Jenkins  
 Anita Jimenez  
 Jamie Johnson  
 Julie Johnson  
 Melissa Johnson  
 Michelle Johnson  
 Nancy Johnson  
 Evonne Jones  
 Tonya Jones  
 Trina Joseph  
 Susan Judkins  
 Lizz Kabat  
 Annick Kabeya  
 Lisa Kahler  
 Danielle Kaiser  
 Judy Kaiser  
 Stacey Kamps  
 Brenda Karp  
 Jessica Karpat  
 Courtney Keller  
 Nichole Kelley  
 Mary Jo Kelly  
 Mindy Kermes



*Participants at a CREW Career event hosted by Toronto CREW*

Angela Kesselman  
 Helen Kessler  
 Rosalie Keszler  
 Lori Kilberg  
 Michelle Kilby-Miranda  
 Jefferson Killgore  
 Kristin Killgore  
 Julie Kilpatrick  
 Julie Kimble  
 Ashley King  
 Sherry Kissal  
 David Klein  
 Ralph Knauss  
 Jeanie Springer Knight  
 Frank Knott  
 Lada Kocherovsky  
 Krista Korinis  
 Amy Korte  
 Denise Kouril  
 Laura Kreuger  
 Julie Kriegel  
 Connie Kroenung  
 Elizabeth Krol  
 Melissa Kroskie  
 Paulina Kucharska  
 Kathryn Kucharski  
 Ashley Kuhn  
 Sandra Kuhns  
 Stacy Kurko  
 Ligia Labrada  
 Liana Lake

Beth Lambert  
 Lisa Lane  
 Michele Langenberg  
 Lauren Langham  
 Stephanie Lanier  
 Larry Lanning  
 Colleen Larkin  
 Cecilia Lassiter  
 Kathleen Law  
 Kelly Leanos  
 Catherine Leap  
 Meredith Leapley  
 Steven LeBlanc  
 Christie Lee  
 Mary LeFevre  
 Steve Lefton  
 Tessa Leftwich  
 Holly Lennihan  
 Cheryl Springer Lentz  
 Trudi Lesser  
 Judith Levine  
 Alana Liane  
 Tina Lichens  
 Marya Liebezeit  
 Marilyn Lissner  
 Pamela Little  
 Jennifer Litwak  
 Esin Locke  
 Laurie Logue  
 Elissa Looney  
 Luke Lopatka



Rosemary Loverdi  
 Tomi Jo Lynch  
 Lori Lynn  
 Irene MacDougall  
 Rebecca Macey  
 Sonia Macias  
 Kalin Magruder  
 Liz Mahoney  
 Daniel Mai  
 Gail Malloy  
 Cindy Malone  
 Lisa Maloney  
 Kelly Mancha  
 Vitina Mandella  
 Vanessa Manners  
 Koren Manning  
 SaraBeth Mantia  
 Pamela March  
 Kathleen Margolis  
 Kim Marks  
 Keren Marti  
 Margaret Martin  
 Ed Martinez  
 Kelly Martone  
 Melodye Marvin  
 Jeri Massengill  
 Susan Matejcek  
 Marianne Mathieu  
 Jennifer Matulich  
 Shelly Maurer  
 April May  
 Jennifer Mazawey  
 Tina McCall  
 Robert McCarthy  
 Jane McCollum  
 Danielle McCombs  
 Amy McCook  
 Barbara McDuffie  
 Christy McFall  
 Ann McGuire  
 Mia McKay  
 Kassandra McLaughlin  
 Marie McLucas  
 Shawn McMillan  
 Jennifer McNett  
 Melissa McPherson

Kari Meier  
 Jean Meilinger  
 Jerri Menaul  
 Sarah Meroy  
 Jody Merritt  
 Rachel Merva  
 Tom Metcalfe  
 Molly Meyer  
 Edna Meyer-Nelson  
 tracy mickelson  
 Ericka Miller  
 Stacy Miller  
 Traci Miller  
 Anthony Millman  
 Katerina Milovanoska  
 Cally Miltenberger  
 Lindsay Mingee  
 Bridget Mitchell  
 Kelly Molitor  
 Isabela Montalvo  
 Laurie Montgomery  
 Barbara Moore  
 Lori Moore  
 Jaclyn Morrison  
 Nancy Morse  
 Andrea Moseley  
 Amber Mufale  
 May Mui  
 Kathy Mulgrew  
 Laura Murrer  
 La Guardia Myers  
 Sue Myers  
 Shaima Namazifard  
 Ann Natunewicz  
 Barbara Needle  
 Bobbi Kay Nelson  
 Heather Nelson  
 Stacia Neugent  
 Cheryl Newton  
 Jeannie Nguyen  
 Cristy Nine  
 Stacy Nishioka  
 Judith Nitsch  
 Maria Nocera  
 Kate Noel  
 David Noonan

Melissa Noone  
 Niki Norton  
 Tara Norton  
 Yvonne Nyakana  
 Jeannie Nyberg  
 Therese O'Brian  
 Catherine O'Connor  
 Michele O'Connor  
 Sharon Ohayon  
 Nancy Olah  
 Emily O'Mahoney  
 Anna O'Neal  
 Lani O'Reidy  
 Sarah Goss O'Rielly  
 Brandey Orsag  
 Amanda Osburn  
 Patricia Osenbaugh  
 Benjamin Osgood  
 Kaitlin Ouverson  
 Geri Pacheco  
 Diane Paddison  
 Janice Paine  
 Jennifer Paisley  
 Jordana Paker  
 Diana Palecek  
 Cori Palmer  
 Elizabeth Paquette  
 Julie Parker  
 Shina Parker  
 Melinda Parrish-  
 Brumfield  
 Sue Paton  
 Linda Paul  
 Jeanne Peck  
 Sarah Peck  
 Crystal Peden  
 Michele Pellico  
 Fran Pepis  
 Carissa Perkins  
 Susan Perry  
 Janice Peters  
 Jennifer Peters  
 Kristen Thall Peters  
 Nancy Petersen  
 Vanessa Petersen  
 Karla Peterson

Chris Petryshin  
 Gina Phillips  
 Marcy Phillips  
 Rob Phillips  
 Sheryl Pickens  
 Thomas Pierik  
 Judith Pike  
 Aarohi Pilankar  
 Jane Pilger  
 Jan Pilko  
 Michelle Pink  
 Linda Plesic  
 Katie Plett  
 Cristina Polk  
 Page Pollock  
 Virginia Pope  
 Annette Popiel-Hammerle  
 Lindsey Postula  
 Joni Powell  
 Barbara Price  
 Nancy Pridal  
 Karen Priesman  
 Jacqueline Pueppke  
 Elizabeth Pye  
 Lily Quan  
 Sandi Quigley  
 Allison Rabin  
 Nicole Radumski  
 Susan Rainey  
 Debora Ramirez  
 Karie Ramsey  
 Jill Rasmussen  
 Jennifer Raymond  
 Lauren Reeves  
 Mareena Register  
 Art Rendak  
 Carolyn Rettig  
 Barbi Reuter  
 Jennifer Reyes  
 Megan Riess  
 Lynn Rittgers  
 Joanne Roach  
 Lisa Robach  
 Claire Roberts  
 Gayle Roberts  
 Tori Robinson

**LEAD CONTRIBUTOR** | \$100 - \$499 (continued)

Elizabeth Romano  
 Connie Ronner  
 Joan Rosoff  
 Tillie Ross  
 Kimberly Rossiter  
 Rachel Rouse  
 Dawn Royle  
 Allegra Roza  
 Kim Rubin  
 Cathy Rudisill  
 Glenn Rufrano  
 Shawn Rush  
 Ryan Rusler  
 Elizabeth Russell  
 Michelle Rutkowski  
 Carmen Houston Ryan  
 Theresa Samples  
 Rhonda Sands  
 Megan Sandy  
 Natalie Sanko  
 Elizabeth Santis  
 Cherie Santos-Wuest  
 Steve Sapio  
 Gordon Sato  
 Serena Sayani  
 Pam Scamardo  
 Jennifer Scher  
 Jane Schiff  
 Stella Schirripa  
 Cindy Schooler  
 Karin Schulz  
 Darcey Schumacher  
 Douglas Scott  
 Philip Scott  
 Sue Selle  
 Roger Shake  
 Jill Sharif  
 Carla Sharpe  
 Susan Shelby  
 Julianne Shively  
 Myranda Sieverding  
 Kristy Simonette  
 Lacie Simonton

Allison Simpson  
 Liz Sims  
 Heather Skinner  
 Stacy Sklaver  
 Margaret Slesnick  
 Andy Slipka  
 Tara Smiley  
 Ellen Smith  
 Leslie Smith  
 Suzanne Smith  
 Elizabeth Solender  
 Angie Sommer  
 Julie Sorensen  
 Danielle Sprouls  
 Kimberly Steiner  
 David Steinwedell  
 Michele Stevens  
 Libby Stevenson  
 Ashley Stewart  
 Bob Stewart  
 Malcolm Stewart  
 Kostas Stoilas  
 Lauren Stokes  
 Evan Stone  
 Bonnie Stretz  
 Sloan Kormelink  
 Stryffeler  
 Teresa Stuebben  
 Nellie Sullivan  
 Lexi Summers  
 Larissa Svekla  
 Ashley Szatkowski  
 Lori Bliss Tambone  
 Dana Tanner  
 Jennifer Tatum  
 Julia Taylor  
 Kathleen Taylor  
 Kimberly Taylor  
 Sandra Taylor  
 Sara Terry  
 Leslie Teskey  
 Jennifer Thomas  
 Rhonda Thomas

Teri Thompson  
 Beth Thurman  
 Sarah Tillar  
 Rene Tingey  
 Ashley Tinsley  
 Stephanie Titus  
 Sheila Traficante  
 Andrea Troccia  
 Jana Turner  
 Susan Turner  
 Yvette Turner  
 Joyce Tuttle  
 Hilary Tyson  
 Rebecca Udell  
 Oxana Urrutia  
 Elizabeth Valvano  
 Inge Van Den Berg  
 Katherine VanBerschot  
 Teresa Vasquez  
 Galit Ventura-Rozen  
 Dorothy Vermeer  
 Brenda Vickrey-Johnson  
 Sakriti Vishwakarma  
 Brenna Wadleigh  
 Ann Waeger  
 Curtis Waker  
 Brian Wallace  
 NoRhett Walls  
 Wendy Walton-Smith  
 Elizabeth Ward  
 Janine Warren  
 Sherry Warren  
 Michelle Warriner  
 Jody Watkins  
 Cassie Watts  
 Travis Wear  
 Sonya Webster  
 Mandi Wedin  
 Heather Weerheim  
 Jake Wegleitner  
 Peggy Wei  
 Virginia Weida  
 Krone Weidler

Lindsay Welch  
 Jaren Wells  
 MaryKay West  
 Melinda Weston  
 Janet Wheeler  
 Diana Whisenant  
 Andrea White  
 Lynne White  
 Judy Whitman  
 Karen Whitt  
 Stacy Wiggins  
 Elizabeth Wilke  
 Jodi Wilkeson  
 Misty Moore Willard  
 Joseph Williams  
 Brittney Willis  
 Judy Willoughby  
 Julie Wilson  
 Kristine Wilson  
 Lea Wilson  
 Kim Wingerak  
 Cindy Winters  
 Kmeal Winters  
 Beverly Woodall  
 Stacey Woods  
 Cindy Wozny-Carl  
 Jenifer Wright  
 Whitney Yelm  
 Lyndsy Yim  
 Jenn York  
 Rose Young  
 Jennifer Yoxtheimer  
 Penny Yu  
 Beth Zafonte  
 Donna Zalecky  
 Beth Jo Zeitzer  
 Patricia Zelayandia  
 Sharon Zinser  
 Amy Zoltie  
 Christine Zwozdesky

\*The donors listed in the 2021 CREW Network Foundation Annual Report are individuals and organizations whose \$100+ contributions to CREW Network Foundation were received over the course of 2021. This list, however, is not inclusive of the generous support received by CREW Network Foundation from members and chapters through chapter fundraising events including, but not limited to, auctions/raffle item donations or purchases. If there are questions or concerns about the accuracy of this report, please submit your inquiries to CREW Network Foundation.



**HEADQUARTERS**

1201 Wakarusa Dr., Suite D  
Lawrence, KS 66049 USA  
T: (785) 832-1808  
F: (785) 832-1551



**CANADIAN REGIONAL OFFICE**

PO Box 822, Stn. A  
Toronto, ON M5W 1G3