

CREW NETWORK



CHAPTER LEADERSHIP CIRCLE



2024 Global Opportunities and Benefits

Position your chapter as a leader
in supporting diversity and the
advancement of women in
commercial real estate globally.

About CREW Network

CREW Network is the premier global business network dedicated to transforming the commercial real estate industry by advancing women and diverse talent globally. Our 14,000+ members in more than 80+ chapters across the globe represent every discipline of the commercial real estate industry. We are the singular commercial real estate organization dedicated to diversity, equity and inclusion (DEI), providing leadership development, critical research, tools, and industry education to advance women and diverse talent and to assist our partners' efforts to enable action.



Our Global Initiatives

Leadership Development: CREW Network provides professional development and leadership training targeted specifically to meet member needs through programs, events and leadership-specific virtual programming.

Career Outreach: CREW Network is committed to bringing more women into commercial real estate by creating programs that educate women, girls about the career opportunities, supporting college-level commercial real estate education through scholarships, and providing mentorships to those new to the industry.

Business Networking: Our multidisciplinary members experience unparalleled business networking and deal-making opportunities locally through chapter events and globally through CREW Network.

Industry Research: CREW Network is the world's leading researcher on gender and diversity in commercial real estate. We produce research papers annually and a benchmark study every five years.

Our Chapter Leadership Circle Partners

CREW Network CLC partnership supports the development and expansion of critical network-wide member services offered by CREW Network—programs that encourage careers and mentoring within commercial real estate. CLC Partnership positions your chapter as a leader in supporting diversity and the advancement of women in commercial real estate globally, and provides year-round exposure to 14,000+ commercial real estate professionals in 80+ markets globally.

Contact Laura Lewis at
laural@crewnetwork.org
or Wendy Mann at
wendym@crewnetwork.org
to discuss partnership
opportunities for your chapter.

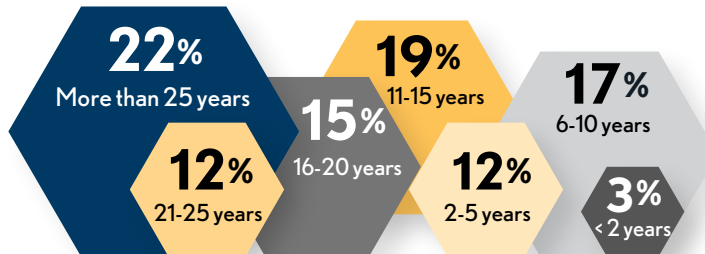


The Value of CREW

CREW Network provides the resources, connections and opportunities for women in commercial real estate to become more successful in their careers, seizing business opportunities and career growth.

Our interdisciplinary membership of industry leaders and senior-level executives creates a unique combination of talents and expertise that can handle virtually any commercial real estate deal from start to finish.

Years of Experience

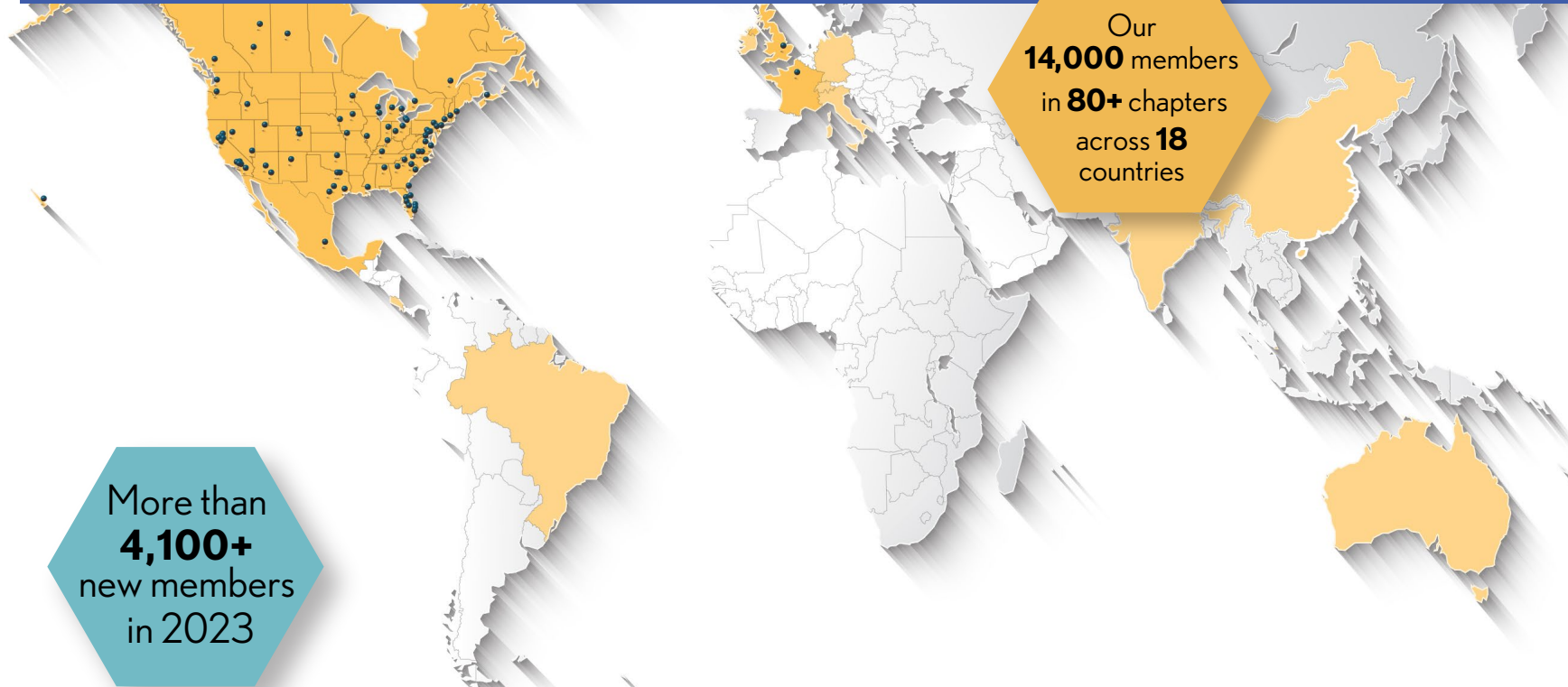


CRE Specialties

Our members represent every discipline of the CRE industry, including:



Membership Growth



1.5 million strong social audience



242,736

visitors to crewnetwork.org totaling nearly **1.5 million** page views

100 million+

CREW Network research media mentions

1,291 jobs posted

in our Career Center

876,000+

reached by CREW Network media mentions

Opportunities for Partnership

Receive additional exposure at these major events

CREW NETWORK Convention

During this three-day premier business networking convention, your chapter will receive exposure to more than 1,200 senior-level women and men representing all disciplines within the commercial real estate industry. Choose the partnership level that provides your chapter the maximum marketing exposure they are seeking.

CREW NETWORK Leadership Summits

Members and leaders from all chapters gather three times a year to conduct CREW Network business, network and participate in leadership development programs. Through these events, members can assess and enhance their skills in such areas as negotiations, public speaking, networking and conflict resolution. Attendees also learn about the local market and development activities unique to that area.



SCHEDULE OF EVENTS

Winter Leadership Summit

Feb. 8-9 | Fort Worth, Texas

Spring Leadership Summit

June 20-21 | Charlotte, North Carolina

Fall Leadership Summit

Sept. 25 | Vancouver, British Columbia

CREW Network Convention

Sept. 25-27 | Vancouver, British Columbia



Summary of Partnership Benefits

| | Silver \$15,000 | Bronze \$10,000 | Patron \$8,000 | Contributor \$5,000 | Friend \$3,000 | Supporting \$2,000 |
|--|--------------------|--------------------|-------------------|------------------------|------------------------|-----------------------|
| Listed on CREW Network website | logo | logo | logo | name | name | name |
| Link to chapter home page | ☑ | | | | | |
| Recognition in the annual report | ☑ | ☑ | ☑ | ☑ | ☑ | ☑ |
| Recognition for webinars/recordings | logo | logo | logo | name | name | name |
| Recognition in following year's Chapter Leadership Circle brochure | logo | logo | logo | name | name | name |
| Chapter Leadership Circle logo for use on chapter website | ☑ | ☑ | ☑ | ☑ | ☑ | ☑ |
| Recognition in CREW Network publications and social media | logo | logo | logo | name | name | name |
| Complimentary full registrations: | | | | | | |
| • Winter Leadership Summit | 2 | 2 | 1 | 1 | 1 for Winter or Spring | |
| • Spring Leadership Summit | 2 | 2 | 1 | 1 | 1 for Winter or Spring | |
| • Fall Leadership Summit | 2 | 2 | 1 | | | |
| Complimentary full registrations for convention | 2 | 1 | | | | |
| Reserved table at one general session luncheon for chapter members | ☑ | | | | | |
| VIP seating: convention luncheons | ☑ | | | | | |
| VIP Sponsor Reception invites at convention | 7 | 6 | 5 | 3 | 2 | 1 |
| Chapter listed in other convention marketing materials | logo | logo | logo | name | name | name |
| Recognition from the podium during CREW Network convention | ☑ | ☑ | ☑ | ☑ | | |
| Exclusive convention event sponsorship | logo | name | | | | |
| Opportunity to place a logoed gift item in the convention attendee bag. Chapters are responsible for selecting, ordering and shipping their item to convention for inclusion in the bag. | logo | logo | | | | |

Contact **Laura Lewis** at laural@crewnetwork.org or **Wendy Mann** at wendym@crewnetwork.org to discuss partnership opportunities for your chapter.

Silver Partner

\$15,000

Year-Round Recognition via CREW Network's Marketing Tools

- Chapter logo listed in a prominent location on the CREW Network website
- Link to chapter home page from the CREW Network website
- Chapter recognition in the CREW Network annual report
- Chapter logo recognition in all webinars and recordings
- Chapter logo recognition in the following year's Chapter Leadership Circle brochure
- Chapter Leadership Circle logo for use on chapter website
- Chapter logo recognition in CREW Network publications and name recognition in social media, as appropriate

CREW Network Leadership Summits

- Two (2) complimentary full registrations for the current year's Winter Leadership Summit
- Two (2) complimentary full registrations for the current year's Spring Leadership Summit
- Two (2) complimentary full registrations for the current year's Fall Leadership Summit

CREW Network Convention

- Two (2) complimentary full registrations for the current year's convention
 - Includes VIP seating at the luncheons
- Reserved table at one general session luncheon for chapter members
- Seven (7) invitations to the VIP Sponsor Reception at the current year's convention
- Chapter logo listed in other convention marketing materials
- Chapter recognition from the podium during the current year's convention
- Chapter logo recognition on exclusive event
- Opportunity to place a logoed gift item in the convention attendee gift bag. Chapters are responsible for selecting, ordering and shipping their item to convention for inclusion in the bag.



Bronze Partner

\$10,000

Year-Round Recognition via CREW Network's Marketing Tools

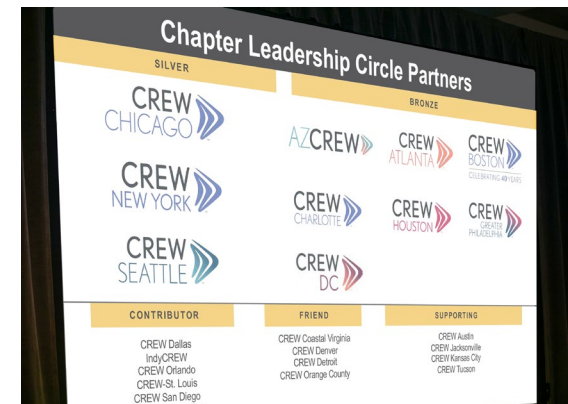
- Chapter logo listed in a prominent location on the CREW Network website
- Chapter recognition in the CREW Network annual report
- Chapter logo recognition in all webinars and recordings
- Chapter logo recognition in the following year's Chapter Leadership Circle brochure
- Chapter Leadership Circle logo for use on chapter website
- Chapter logo recognition in CREW Network publications and name recognition in social media, as appropriate

CREW Network Leadership Summits

- Two (2) complimentary full registrations for the current year's Winter Leadership Summit
- Two (2) complimentary full registrations for the current year's Spring Leadership Summit
- Two (2) complimentary full registrations for the current year's Fall Leadership Summit

CREW Network Convention

- One (1) complimentary full registration for the current year's convention
- Six (6) invitations to the VIP Sponsor Reception at the current year's convention
- Chapter logo listed in other convention marketing materials
- Chapter recognition from the podium during the current year's convention
- Chapter logo recognition on an exclusive event
- Opportunity to place a logoed gift item in the convention attendee gift bag. Chapters are responsible for selecting, ordering and shipping their item to convention for inclusion in the bag.



Patron Partner

\$8,000

Year-Round Recognition via CREW Network's Marketing Tools

- Chapter logo listed in a prominent location on the CREW Network website
- Chapter recognition in the CREW Network annual report
- Chapter logo recognition in all webinars and recordings
- Chapter logo recognition in the following year's Chapter Leadership Circle brochure
- Chapter Leadership Circle logo for use on chapter website
- Chapter logo recognition in CREW Network publications and name recognition in social media, as appropriate

CREW Network Leadership Summits

- One (1) complimentary full registration for the current year's Winter Leadership Summit
- One (1) complimentary full registration for the current year's Spring Leadership Summit
- One (1) complimentary full registration for the current year's Fall Leadership Summit

CREW Network Convention

- Five (5) invitations to the VIP Sponsor Reception at the current year's convention
- Chapter logo listed in other convention marketing materials
- Chapter recognition from the podium during the current year's convention



Contributor Partner

\$5,000

Year-Round Recognition via CREW Network's Marketing Tools

- Chapter name on CREW Network website
- Chapter recognition in the CREW Network annual report
- Chapter name recognition in all webinars and recordings
- Chapter name recognition in the following year's Chapter Leadership Circle brochure
- Chapter Leadership Circle logo for use on chapter website
- Chapter name recognition in CREW Network publications and social media, as appropriate

CREW Network Leadership Summits

- One (1) complimentary full registration for the current year's Winter Leadership Summit
- One (1) complimentary full registration for the current year's Spring Leadership Summit

CREW Network Convention

- Three (3) invitations to the VIP Sponsor Reception at the current year's convention
- Chapter name listed in other convention marketing materials
- Chapter recognition from the podium during the current year's convention



Friend Partner

\$3,000

Year-Round Recognition via CREW Network's Marketing Tools

- Chapter name on CREW Network website
- Chapter recognition in the CREW Network annual report
- Chapter name recognition in all webinars and recordings
- Chapter name recognition in the following year's Chapter Leadership Circle brochure
- Chapter Leadership Circle logo for use on chapter website
- Chapter name recognition in CREW Network publications and social media, as appropriate

CREW Network Leadership Summits

- One (1) complimentary full registration for either the current year's winter OR spring leadership summit

CREW Network Convention

- Two (2) invitations to the VIP Sponsor Reception at the current year's convention
- Chapter name listed in other convention marketing materials



Supporting Partner

\$2,000

Year-Round Recognition via CREW Network's Marketing Tools

- Chapter name on CREW Network website
- Chapter recognition in the CREW Network annual report
- Chapter name recognition in all webinars and recordings
- Chapter name recognition in the following year's Chapter Leadership Circle brochure
- Chapter Leadership Circle logo for use on chapter website
- Chapter name recognition in CREW Network publications and social media, as appropriate

CREW Network Convention

- An invitation to the VIP Sponsor Reception at the current year's convention
- Chapter name listed in other convention marketing materials



Thank you 2023 Partners

SILVER



BRONZE



CONTRIBUTOR

CREW Dallas
IndyCREW
CREW Orlando
CREW-St. Louis

FRIEND

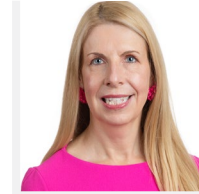
CREW Coastal Virginia
CREW Orange County
CREW San Diego

SUPPORTING

CREW Kansas City

CREW NETWORK 2024 Board of Directors

PRESIDENT



Karen Whitt

President, Real Estate
Management Services
Colliers International
CREW DC & CREW Atlanta

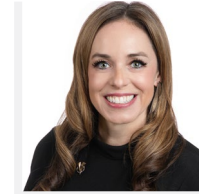
PRESIDENT-ELECT



Cindy MacMillan

Vice President, Investment
Gosvenor
CREW Vancouver

IMMEDIATE PAST PRESIDENT



Alyssa Dangler

Shareholder
Williams Mullen
CREW Coastal Virginia



Wendy Mann

CREW Network CEO
CREW Network
Foundation President

DIRECTORS



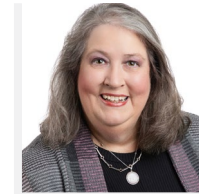
Elena Cutshall

Studio Director
Gensler
CREW Austin



Sarah Mancuso

Regional Leasing Lead-
Northwest
JLL
CREW Silicon Valley



Marie McLucas

Chief Financial Officer
Primax Properties, LLC
CRE Charlotte



Barbara Oddo

Director and Regional
Manager
Tishman Speyer
CREWBoston



Camille Renshaw

CEO & Co-Founder
B + E
CREW New York



Leslie Teskey

Managing Principal
Cresa
IndyCREW



Marsha Womack

First Vice President
Citizens Trust Bank
BirminghamCREW



Commercial Real Estate Women Network

1201 Wakarusa Dr., Suite D | Lawrence, KS 66049 USA | 00-1-(785) 832-1808 | crewnetwork.org

Contact **Laura Lewis** at laural@crewnetwork.org or

Wendy Mann at wendym@crewnetwork.org

to discuss partnership opportunities for your chapter.