

# CREW NETWORK



# 2022

ANNUAL REPORT

# Table of Contents

---

A Note from our 2022 President .....	3
2022 Board of Directors .....	4
By the Numbers .....	5
Coming Together as One CREW .....	6
New CREW Initiatives and Continued Momentum .....	9
CREW Research Guides the Industry .....	11
2022 Honorees .....	12
Financial Summary .....	15
Thank You 2022 Sponsors .....	16
Partner and Chapter Leadership Circle Directory .....	17

*Transforming the commercial  
real estate industry by advancing  
women globally*

# President's Message

Fellow CREW Network members and partners,

On behalf of our global board, executive committee, and volunteer leaders, I am proud to share with you highlights of CREW Network's 2022 achievements in the pages of this report. In a year where the global economy and local markets were still uncertain, we were intentional in supporting one another and providing programming and information our members needed to find success. In 2022:

- CREW Network's membership grew to 12,405 as we expanded our global reach into France and Mexico, and established a new chapter, CREW Hawaii.
- More than 6,200 CRE professionals attended CREW events virtually and in-person, making 2022 our largest ever event turnout.
- We launched CREW Councils, a unique forum for our members to engage with peers at the global level for business connections, potential deals and projects, knowledge exchange and insight sharing.
- We published a timely and relevant research paper, *Building the CRE Workforce of the Future*, which provided insight into new workforce priorities, and building a workplace that is more equitable and inclusive.

As we watched the dust settle from a global pandemic and prepared for what would come next, CREW Network members continued to provide one another with referrals, opportunities, and support in what was another unprecedented year for our organization. I would like to thank our membership, the entire CREW Network staff, our board of directors, our chapter leaders and our highly committed industry partners for your commitment and dedication.

With gratitude,



**Barbi Reuter**

2022 CREW Network President



**Barbi Reuter**

CEO/Principal

Cushman & Wakefield | PICOR

CREW Tucson



# 2022 CREW Network Board of Directors

## PRESIDENT

**Barbi Reuter**  
 CEO/Principal  
 Cushman & Wakefield | PICOR  
 CREW Tucson

## PRESIDENT-ELECT

**Alyssa Dangler**  
 Partner  
 Williams Mullen  
 CREW Coastal Virginia

## IMMEDIATE PAST PRESIDENT

**Tiffany English**  
 Senior Director of Architecture  
 Qualcomm  
 CREW San Diego

## CHIEF EXECUTIVE OFFICER

**Wendy Mann, CAE**  
 CEO | CREW Network  
 President | CREW Network Foundation

## DIRECTORS

**LaShawn Bates**  
 Executive Director  
 JLL  
 CREW Tampa Bay

## Jennifer Chambers

Partner  
 Plante Moran  
 CREW Detroit

## Lynn Goessling

Partner  
 Armstrong Teasdale LLC  
 CREW-St. Louis

## Pauline Hale

US Head of Quality Control  
 JLL  
 CREW Orange County

## Pam Scamardo

Founder and President  
 TPK Properties LLC  
 CREW Orange County

## Vicki Summerall

Senior Vice President/  
 Business Development  
 Republic Title of Texas, Inc.  
 CREW Dallas

## Kim Wingerak

Vice President, Operations  
 RioCan REIT  
 CREW Calgary

Front row L-R: Alyssa Dangler,  
 Wendy Mann, Barbi Reuter,  
 Tiffany English, Back row L-R: Jennifer  
 Chambers, Lynn Goessling, Kim  
 Wingerak, Vicki Summerall, LaShawn  
 Bates, Pam Scamardo, Pauline Hale

## 2022 BY THE NUMBERS

# 12,405

total members

in **12** countries



**80** Virtual  and In-Person Events

**6,200+** Attendees



**1** Convention



**1,349**  
attendees

**3** Leadership  
Summits



**991** registered

**71** members  
joined  
**CREW Councils**  
(new in 2022!)

Members came to **CREWBIZ**   
nearly **43,000** times in 2022

**88** graduates  
of the  
 Leadership  
Certificate

CREW expanded  
its presence in **3**  
NEW  
markets

{  
Hawaii  
France  
Mexico City

**242,736** visitors  
to the CREW Network website  
totaling  
nearly **1.5 million**  
page views

# Coming Together as One CREW

## Connecting and Thriving in the New Year at the Winter Leadership Summit

After two years spent in a global pandemic, there were still many unknowns ahead in 2022. CREW Network President Barbi Reuter kicked off the Winter Leadership Summit in Tampa Bay, Florida, by emphasizing the importance of staying engaged and connected with CREW to receive support and guidance in handling new business and personal challenges that arose.

With all of the changes in the workplace brought about by COVID, burnout was a hot topic in the professional world. Speaker Monique Valcour, who has more than 20 years of experience designing executive education, led the first leadership training session of the summit, delivering insights on understanding burnout, what factors contribute to it, and helping attendees identify their own burnout risk factors. Valcour discussed strategies and action plans for overcoming it and coming out on the other side. This session gave attendees the opportunity to reflect and position themselves to thrive professionally and lead effectively in 2022 and beyond.

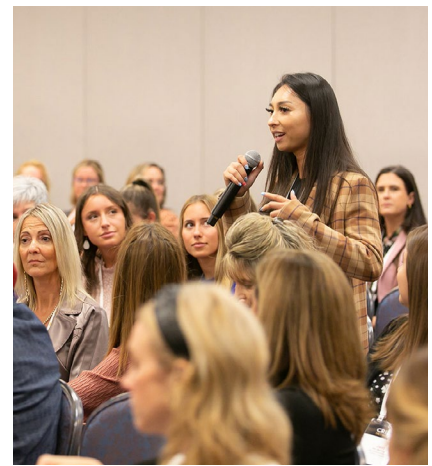
The following day, Kimberly Parsons led a professional development training on catalyzing high performance in teams, which provided tactics on how to lead effective collaboration. Parsons discussed the intricate dynamics leaders must navigate when managing a team, and strategies they can implement right away to improve performance. The summit concluded with a walking tour of the Tampa Bay waterfront, which featured a variety of the city's main commercial real estate developments and attractions..



## Spring Leadership Summit Lends Strategies for Strengthening Team Engagement

Speed networking facilitated early connection at the Spring Leadership Summit in Indianapolis, Indiana. With five minutes to meet fellow CREW members seated across from them, each attendee had the opportunity to talk business, exchange cards, and get connected in the CREW app and on social media. Attendees continued developing those new relationships throughout the summit.





Strengthening connection and engagement was a theme at the summit, as Cynthia D'Amour led leadership training focused on how leaders can better engage their teams and chapter members. Attendees learned how to cultivate an ideal environment for higher participation, and how to create memorable and impactful experiences to maintain that engagement. Day two included training with Brenda Wensil, who shared insights on how to project confidence, harness personal power and make your voice heard. Attendees learned key communication traps women face, how to avoid unintentionally undermining themselves, and ways women can be more effective in contributing during conversations and meetings.



During the spring council meeting, two important updates were made to CREW Network Bylaws, the first allowing At-Large Members to be eligible to serve on the CREW Network Nominating Committee, and the second to use neutral pronouns to be inclusive of all individuals regardless of gender or gender identity. Delegates voted unanimously to approve both updates aimed at making our global network more inclusive.

## The Windy City Welcomes Our Global CREW

More than 1,300 commercial real estate leaders gathered in Chicago, Illinois, for the commercial real estate industry's premier business networking event, the CREW Network Convention.



The convention opened with an inspiring performance of "Fight Song" by Rachel Platten, performed by CREW Cleveland's Laura Hengle, with stories of career triumph interwoven between verses, recited by a diverse group of CREW members in varying sectors and stages in their career journeys. Included were Christina Bejjani, Anita Chen, Kate Briscoe, Christina Fenwick, Kelli Dickerson, and Stacey Kamps. This performance highlighted all the different walks of life of our CREW members, and celebrated how each member overcame obstacles to find success in our industry. "You belong in CREW" was the underlying convention theme.



Following the performance was keynote speaker Jill Donovan, founder of Rustic Cuff jewelry and former attorney and adjunct law professor at the University of Tulsa. Donovan's passion for gifting led her to start her business, and her session focused on turning setbacks into fuel and finding purpose and belonging. She captivated the room with her bold sense of style and quirky sense of humor, adding levity to her stories of heartache, and modeling resilience.

On day two of the convention, world-renowned economist and financial expert Marci Rossell gave a thought-provoking talk on the current state of the economy, discussing a looming recession and providing an insider's perspective on what was to come in the months ahead. "I keep seeing the word recession in the media, but I'm not finding a recession in the data," Rossell stressed, as she discussed supply chain disruption and other trends in our industry and economy.

Closing the convention was global journalist, television personality and author Lisa Ling. Ling was interviewed on stage by CREW Network President Barbi Reuter, and provided stories, inspiration, and insights on her career journey, having empathy, and the importance of being exposed to diverse experiences.

With Chicago learning excursions of both innovative and historical developments and areas, attendees had the opportunity to experience the city like never before. The convention also offered 30+ learning opportunities including breakouts, peer exchanges, and conversation corners—smaller, more intimate sessions that allowed participants to focus on the specific industry information and connections needed.



## Aloha to Our Newest CREW Network Chapter

During the council meeting at the Fall Leadership Summit in Chicago, just a day prior to the Convention, delegates representing CREW Network chapters unanimously voted to add CREW Hawaii to our global network. The chapter was formed under the leadership of Chloe Contreras, Kelly Graf, Nicole Rodriguez, Danka Fabiankovicova, Sara Tsukamoto Strona and Shawn Rush, a CREW member since 1998, past president of CREW Seattle, and past CREW Network board member. In 2022, these women were introduced and quickly established the long-awaited organization on the island of O'ahu.



Marci Rossell



Lisa Ling



Jill Donovan



# New CREW Initiatives and Continued Momentum

## Members Expand Their Business Opportunities Through New CREW Councils

In 2022, CREW Network launched CREW Councils, a unique forum for members to engage with peers at the global level. With each council limited to 25 members, and only one commercial real estate professional per market, councils enabled members to leverage information, resources, and business opportunities in an intimate, non-competitive environment.



Four councils were introduced in 2022: CEOs, Emerging Leaders, Industrial, and Multifamily. Council members met in-person in the spring in Chicago and also met up during the CREW Network Convention. The rest of their meetings were held virtually, and council members became part of an ongoing cohort, staying together indefinitely.

## CRE Pledge for Action Gains Momentum and Signatories

CREW Network's CRE Pledge for Action continued to be adopted by industry leaders in 2022, as it surpassed 100 signatories. With very little change in advancing women and underrepresented groups in commercial real estate in the last 15 years, the pledge aims to hold industry leaders accountable in creating a more diverse and equitable industry for all.

Throughout the year, CREW Network shared updates and milestones reported by signatories and their companies, highlighting their progress toward meeting the six pledge goals and new initiatives and policies to support women and DEI. Examples of progress included adding employee engagement groups to foster a more inclusive workplace, intentional recruiting and hiring, compensation studies, and annual diversity reports. Momentum carried throughout the year with the addition of 50 more companies who pledged to become part of the needed change in commercial real estate.

## Defying Gravity and Championing Gender Equity with Ellen Ochoa

History-making astronaut, inventor, and corporate leader Ellen Ochoa joined CREW Network for a global International Women's Day event in 2022. Named the 11th Director of NASA's Johnson Space Center in 2013 and the first Latinx and second female director to hold this position, Ochoa shared insights on



## Creating a Culture Where Everyone Has a Voice

In late 2021, Barbi Reuter hosted CREW Network's first Listening Tour to provide insight into the environment of our organization and any unwelcoming or biased behavior members may have experienced in CREW. The tour revealed both highlights and areas of improvement and prompted the creation of the Voices at the Table series, virtual discussions of belonging in CREW. The discussions were facilitated by CREW Network board directors, and allowed for candid, authentic conversations and helped generate ideas for creating a more inclusive environment for our members globally.

the obstacles of being a woman and minority in STEM. An active astronaut since 1991, Ochoa became the first Latina to go to space when she served on a nine-day mission aboard the shuttle Discover in 1993—in total, she has flown in space four times.

Ochoa also discussed leadership and the power of teams, and all that can be accomplished with a group of people dedicated to a common goal. In the words of Ochoa, “To be a good leader, you need to focus on two things: accomplishing the mission and taking care of your people.”

## CREW Network Returns to Cannes for MIPIM

After a hiatus due to the pandemic, MIPIM, the world’s largest international property event hosted in Cannes, France each March, returned once again. CREW Network President Barbi Reuter attended alongside CEO Wendy Mann, and the event was focused on the overarching theme of “Driving Urban Change.” Sessions and discussions centered around the office market and changing use-habits and locations, accelerated by the pandemic and more employees working from home. With 20,000 real estate professionals in attendance from more than 90 countries, the event served as a platform for CREW Network leaders to share our mission and bring more professionals into our global network.



## CREW Network Expands into France and Mexico

CREW Network established affiliates in both France and in Mexico in 2022, bringing new opportunities and connections to our network, and supporting the advancement of women in commercial real estate globally. In March, CREW Network held a launch event in Paris with more than 80 real estate professionals in attendance from the U.S. and European countries, and in September, hosted more than 50 professionals in Mexico City.



## CREW Comes Together to Support Members Affected by Hurricane Ian

As one, united CREW, members came together to support each other in a time of crisis as Hurricane Ian caused deep destruction on the west coast of Florida. Members in CREW Naples/Fort Myers were hit the hardest with some individuals losing their homes. CREW members and chapters responded generously, with thousands of dollars in donations and gift cards collected by CREW Naples/Fort Myers for members who experienced significant damage or loss.

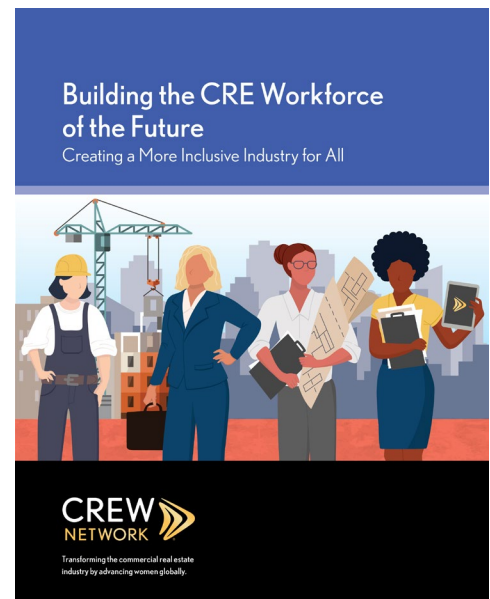
# CREW Research Guides the Industry

## Building the CRE Workforce of the Future

The post-COVID workplace experienced a significant shift in how employees view work. This new way of thinking touched on job security, pay equity, and inclusion in the workplace. CREW Network's 2022 industry research paper, Building the CRE Workforce of the Future, examined the state of the commercial real estate workplace, what employees wanted for the future, and how to build a more inclusive and equitable industry.

In the summer of 2022, CREW Network surveyed more than 1,200 CRE professionals across five countries, in more than 25 specializations and 10 sectors. More than 92% of respondents said their companies are inclusive, referring to inclusivity as "the practice or policy of providing equal access to opportunities and resources for people who might otherwise be excluded or marginalized, such as those having disabilities or belonging to other minority groups."

Twenty-nine percent of respondents said that women in their work location left their company voluntarily in the last two years as a result of the pandemic, an increase from 2021 (24%). Of the 29% who said that women left their work location, 95% reported that the women who left have not returned. The research paper also revealed insights on access to mentors, flexible work, and the need for employee mental health support, and provided a comprehensive action guide for company leaders to use to support the advancement of women and underrepresented groups.



Only **56%** of respondents said they had access to a mentor or sponsor in the last two years.

For people of color, only **21%** had a mentor or sponsor in the last two years.

Only one-third of women globally, **33%**, have the option to work a hybrid or flexible schedule



# 2022 Honorees

## Honoring the Achievements of Women in CRE

CREW Network is proud to honor the outstanding achievements of our members and their impact on the industry. Through our annual recognition programs, including Distinguished Leaders, Impact Awards, and the CREW Catalyst Award, CREW Network continues to provide a platform to honor exceptional industry professionals.

### 2022 Distinguished Leaders

Commercial real estate executives Chandra Dhandapani, Leeny Oberg, and Deborah Quok were named CREW Network Distinguished Leaders in 2022 and were featured speakers at the CREW Network Convention.

**Dhandapani**, CEO of Global Workplace Solutions at CBRE, oversees the delivery of all services, including facilities management, project management and transaction services, to local and multinational occupier clients around the world. Prior to joining CBRE, she was a senior executive at Capital One Financial for 17 years, including Digital Transformation Leader and Chief Information Officer of the bank's Financial Services division.

**Oberg** has served as Marriott International CFO since 2016. She was previously CFO for The Ritz-Carlton, where she contributed significantly to the brand's performance, growth, and organizational effectiveness. Before returning to Marriott in the CFO role, she served in a range of financial leadership positions with Marriott including Senior Vice President, Corporate and Development Finance; and Senior Vice President, International Project Finance and Asset Management, EMEA.

**Quok**, Senior Vice President of SVN Capital West Partners, has extensive experience in commercial brokerage, consulting, and corporate real estate, with a current focus on office and medical office leasing and sales. She was the first woman of color to serve as CREW Network President and has been recognized for her leadership and vision in developing the organization's industry-leading research on women in CRE nearly two decades ago. Quok also served in many leadership roles with CREW Sacramento and CREW San Francisco.

*Recognizing  
extraordinary  
leadership  
and success  
in commercial  
real estate*



Chandra Dhandapani



Leeny Oberg



Deborah Quok

## 2022 CREW Catalyst Award

The CREW Catalyst Award honors industry leaders who are committed to diversity, equity, and inclusion in commercial real estate. This industry-wide award recognizes a senior-level executive who has consistently demonstrated a commitment to advancing women, serving as a catalyst for change in their company and throughout the industry. The 2022 CREW Catalyst honorees were:

### Allison Bittel

Senior Vice President & Principal, Colliers

Bittel is a trailblazing commercial real estate advisor in Atlanta. With Colliers' support and as a recognized leader in the firm, in 2019, she founded a non-profit organization, The Women's Collective, to build a network of C-suite and executive level women to support one another and drive change through education, mentorship and workplace transformation. In 2022, she founded Leaders on the Rise, the organization's exclusive mentorship program for women and people of color.



Allison Bittel with Tara Piurko

### Clayton Mitchell

Senior Vice President, Real Estate and Facilities,  
Thomas Jefferson University Hospitals

Mitchell leads delivery of real estate, facilities, and public safety across 18 hospitals, a university, 18 million sq. ft., and more than 350 facilities throughout Philadelphia and Southern New Jersey. He has led a complete overhaul of the culture within real estate and facilities at Jefferson to drive greater emphasis on DEI and the acceptance of supplier diversity as a core tenet of corporate strategic sourcing measures. He frequently mentors and provides insights on removing barriers to access.



Clayton Mitchell with Tara Piurko

## 2022 Impact Awards

The CREW Network Impact Awards recognize member achievements considered exceptional. The industry-wide awards were presented in five categories, listed below with the 2022 honorees:

### Entrepreneurial Spirit Impact Award

#### Jeanne Peck

Principal, Darrow Peck Investments | CREW Chicago

Peck is committed to making Chicago's underserved urban areas a place where residents are proud to call home and create an attractive, stable market for the middle class. She formed her company in 2020 and has been involved in the production or preservation of over 200 multifamily affordable housing units. Peck's goal is to draw upon some of the institutional level disciplines to make transactions in the underserved areas of Chicago more accessible and attainable.



Jeanne Peck

## Economic and Community Improvement Impact Award

### Aletha Dunston

Director of Indianapolis Economic Development | IndyCREW

Dunston led the re-development of Fort Benjamin Harrison from a historic, vacated military installation to a walkable, mixed-use campus known as Fort Ben. As Executive Director of this project, she fostered growth through business attraction, retention, and expansion programs that resulted in creation of jobs, capital investment, tax base, and a new city center; the addition of 350 residential units, a Hilton hotel, a library branch, and another \$135 million in projects in process.



Aletha Dunston

## Member-to-Member Impact Award

### Sharon Herrin

President/Broker, Herrin Commercial Real Estate | CREW Dallas

### Sandra Taylor

Principal, SL Taylor Investments, LLC | CREW Dallas

Always looking to connect CREW members for deals and transactions, this duo involved 13 members in the initial acquisition of The Wesley, a multifamily asset, in 2020. When the asset was refinanced in February 2022, they brought in two more CREW members, and when it was listed for sale in 2022, another member made an offer to purchase it. In total, 16 CREW members were involved in the acquisition, refinance, and disposition of this multifamily asset.



Sharon Herrin



Sandra Taylor

## Career Advancement for Women Impact Award

### Shirley Anderson

Business Development Manager, Klinger Constructors, LLC | CREW New Mexico

Anderson's impact can be measured by countless CREW members who have moved up in their companies, taken on leadership roles, and made hard life changes because she believed they could. She has made women in the CRE industry feel welcomed, valued, appreciated, heard, and supported. Never one to sit on the sidelines, she has been highly involved with CREW Network Foundation and her chapter as a charter member of CREW New Mexico and serving as president in 2014.



Shirley Anderson

## Rising Star Impact Award

### Kristin Hornberger

Associate Broker, Midwest Healthcare, JLL | IndyCREW

Hornberger is a member of the JLL Midwest Healthcare broker leasing team, specializing in medical office ownership representation. She came to CRE in 2016 as her second career and is determined to carve out her own path and advance women along the way. She is a 2022 CREW Network Leadership Certificate Program participant and a 2022 Career Opportunities in Real Estate (CORE) mentor and volunteer.

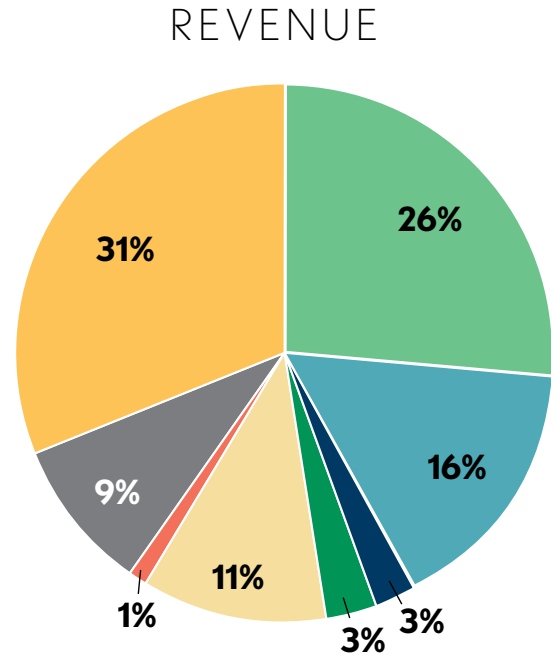


Kristin Hornberger

# Financial Summary

## Total Revenues = \$7,862,896

Membership Dues.....	\$ 2,463,778	31%
Sponsorship.....	2,036,057	26%
Convention Fees .....	1,244,250	16%
Leadership Summit Fees .....	193,025	3%
Other Education Fees.....	255,665	3%
Contract Administrative Services .....	860,441	11%
Other Grant Revenue .....	71,657	1%
Investment & Miscellaneous Income*	738,023	9%
<b>Total</b>	<b>\$ 7,862,896</b>	<b>100%</b>



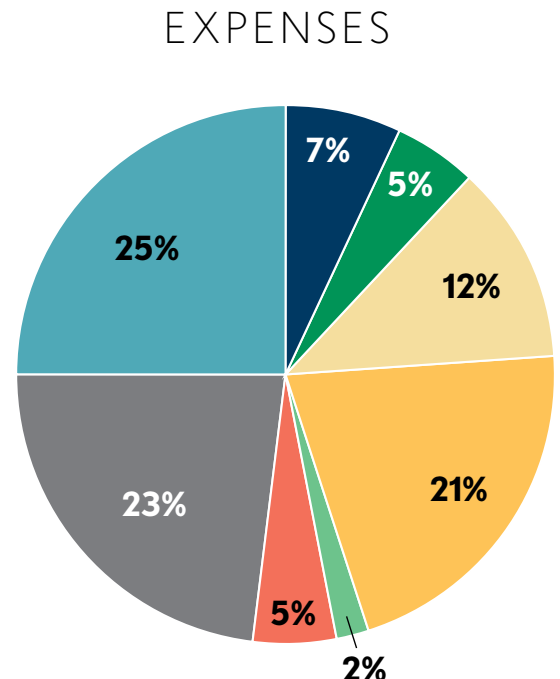
Total revenue before unrealized loss	7,862,896
Unrealized loss on investments	(1,683,723)

**Total revenue** **\$ 6,179,173**

\*does not include \$1,683,723 of unrealized losses on investments

## Expenses = \$7,503,221

Convention.....	\$ 1,888,804	25%
Leadership Summit Meetings .....	527,754	7%
Other Education Programs.....	408,583	5%
Contract Administrative Services ...	914,185	12%
Member/Chapter Services.....	1,578,222	21%
Sponsorship .....	127,971	2%
Governance.....	370,366	5%
Management & General Administration.....	1,687,336	23%
<b>Total expenses</b>	<b>\$ 7,503,221</b>	<b>100%</b>



# Thank You to our 2022 Partners

## PROGRAM AND PREMIER LEAD PARTNERS

CAREER OUTREACH



DEI



GLOBAL AGENDA



INDUSTRY RESEARCH



LEADERSHIP DEVELOPMENT



TECHNOLOGY



## PREMIER LEAD



## PLATINUM



## GOLD



## SILVER



## CHAPTER LEADERSHIP CIRCLE PARTNERS

### SILVER



## BRONZE

### BRONZE

Altus Group  
B+E Net Lease  
Broadstone Net Lease  
First OnSite Restoration  
First Women's Bank  
Locke Lord

MKAssociates  
Pacific Program Management  
Quarles & Brady LLP  
Remington Development Corp.  
Rockefeller Group

Suffolk  
Syndicated Equities  
Transwestern  
Ware Malcomb  
Williams Mullen



## CONTRIBUTOR

## CONTRIBUTOR

## FRIEND

## SUPPORTING

Amwins  
Cereus Asset Services  
Cushman & Wakefield | PICOR  
Fairstead Affordable  
Greater Illinois Title Company  
HITT

HP Architecture  
Kimco Realty  
Kimley-Horn  
Langan  
Safe Harbor

Seyfarth Shaw LLP  
Shaw  
SRS Real Estate Partners  
USAA Real Estate  
Zeller

CREW Dallas  
IndyCREW  
CREW Orlando  
CREW San Diego  
CREW San Francisco  
CREW-St. Louis

CREW Coastal Virginia  
CREW Denver  
CREW Detroit  
CREW Orange County

CREW Austin  
CREW Jacksonville  
CREW Kansas City  
CREW Tucson



## 2022 Partner and Chapter Leadership Circle Directory

### ACCOUNTING

#### Citrin Cooperman

Mary Fuller

Managing Partner, Chicago Office  
123 N. Wacker Drive, Suite 1400  
Chicago, IL 60606 USA  
(312) 658-2431  
mfuller@citrincooperman.com  
<https://citrincooperman.com>

Citrin Cooperman is one of the nation's largest professional services firms, helping companies and high net worth individuals find smart solutions. Whether your operations and assets are located around the corner or across the globe, we can provide new perspectives on strategies that will help you achieve your short-and long-term goals.

#### Plante Moran

##### Jennifer Chambers, CPA

Partner

2601 Cambridge Court, Suite 500  
Auburn Hills, MI 48326 USA  
(248) 375-7290  
jennifer.chambers@plantemor.com  
[www.plantemor.com/](http://www.plantemor.com/)

Plante Moran is among the nation's largest accounting, tax, consulting, and wealth management firms and provides a full line of business analytics and data management services to private and public sector organizations. Plante Moran has a staff of more than 3,300 professionals throughout the United States with international offices in Shanghai, China; Monterrey, Mexico; Mumbai, India; and Tokyo, Japan. Plante Moran has been recognized by a number of organizations, including Fortune magazine, as one of the country's best places to work.

### ALTA SURVEYS, DUE DILIGENCE ASSESSMENTS, ZONING & REMEDIATION

#### AEI Consultants

Holly Neber

CEO

2500 Camino Diablo  
Walnut Creek, CA 94597 USA  
(800) 801-3224

info@aeiconsultants.com

[www.aeiconsultants.com](http://www.aeiconsultants.com)

AEI Consultants is an employee-owned international consulting firm that provides comprehensive services to commercial lenders, property owners, managers, tenants, and developers, industries, institutions, government agencies, and insurers, including many Fortune 500 companies. These services include environmental, property and facility assessments, zoning and energy consulting, site investigation and remediation, industrial hygiene, and construction risk management. Founded in 1992, and awarded Entrepreneur's Top Company Cultures, AEI is based in the San Francisco Bay Area with offices across the United States.

#### Millman National Land Services

##### Anthony Millman

Account Executive

4111 Bradley Circle NW, Suite 240  
Canton, OH 44718 USA  
(234) 380-8614

anthony@millmanland.com

[www.millmanland.com](http://www.millmanland.com)

Millman National Land Services is a nationally recognized firm specializing in ALTA/ACSM Land Title Surveys, Zoning, Environmental and Paralegal Support for the commercial real estate market, including wireless communication services. Millman Surveying specializes in multi-state and multi-site transactions but provides single site surveys as well. Unlike our competition, we are not survey "coordinators". We've eliminated the mark-up fees associated with subcontracting surveys throughout the country and are more responsive due to the control

over our surveyor's schedule. We were chosen by Inc. Magazine as one of its 5000 fastest growing privately held companies in 2008, 2009 and 2012. Our clients are REITs, Property Owners, Lenders, Attorneys, and Title Companies.

#### MKAssociates, Inc.

##### Michelle R. Kilby-Miranda

Managing Partner + CEO

6593 Commerce Court  
Warrenton, VA 20187 USA  
(540) 428-3550 Ext.102  
mkilby@mkassociates.com  
[www.mkassociates.com](http://www.mkassociates.com)

MKAssociates, Inc., "MKA" is a North American Land Services Group, specifically created to manage Land Surveys, Zoning Reports, Environmental Site Assessments, Property Condition Reports, Flood Elevation Certificates, Subdivisions and other Due Diligence Services. Celebrating more than 25 years in the industry, MKAssociates is headquartered in Northern Virginia, just minutes from our Nation's Capital. As a certified woman-owned firm, MKA specializes in single and multi-site, multi-state commercial real estate transactions, and routinely manages these processes across North America.

#### NV5 Real Estate Transaction Services

##### James J. Brown

National Director of Business

Development

3550 W. Market Street, Suite 200  
Akron, OH 44333  
(800) 787-8397

James.Brown@nv5.com

<https://www.nv5.com/>

NV5 is a provider of technology, conformity assessment, and consulting solutions for public and private sector clients supporting infrastructure, utility, and building assets and systems. NV5 primarily focuses on six business verticals: Testing, Inspection & Consulting; Infrastructure; Utility Services; Environmental Health Sciences; Buildings & Owner Representative; and Geospatial Technology. With more than 100 offices nationwide

and abroad, NV5 helps clients plan, design, build, test, certify and operate projects that improve the communities where we live and work.

### ARCHITECTURE, ENGINEERING and CONSTRUCTION

#### First Onsite Restoration

##### Bill Fender

Senior Vice President,

Commercial Property Portfolios

60 Admiral Boulevard

Mississauga, ON L5T 2W1 CAN

(905) 301-2820

bfender@firstonsite.ca

[www.firstonsite.ca](http://www.firstonsite.ca)

FIRST ONSITE is a leading restoration and property reconstruction company serving North America and beyond. We're proud to provide the highest-quality remediation, restoration, and reconstruction services for essential industries of every kind: from healthcare and education, to commercial and residential. Our local, dedicated operations are backed by extensive national resources, so that we can be first to arrive and first to make a difference for businesses, homeowners and communities. Our speed, scope, and scale are unmatched, but it's our people that make the real difference. With a commitment to excellence, service, and doing the right thing, we'll get you back to work and life. No matter what.

#### HITT

##### Lauren Kim

Manager, Pursuits

2900 Fairview Park Drive

Falls Church, VA 22042 USA

(703) 942-5551

lakim@hitt-gc.com

[www.hitt.com](http://www.hitt.com)

HITT is one of the nation's largest general contractors, offering lifecycle construction services from small projects to high rises and headquarters campuses. Our clients trust us to deliver an incredible building experience that turns their complex visions into reality.

## PARTNERS

### Hartshorne Plunkard Architecture

Sophie Bidek

Partner

315 West Walton  
Chicago, IL 60610 USA  
(312) 226-4488  
info@hparchitecture.com

Hartshorne Plunkard Architecture is dedicated to the architectural and interior design of mixed-use developments and in urban centers nationwide. Our portfolio spans the innovative reuse of time-worn historic buildings, to cutting-edge skyscrapers and multi-purpose projects that revive post-industrial destinations.

### Kimley-Horn

Miriam Brodie

Vice President,

National Private Clients  
421 Fayetteville St, Suite 600  
Raleigh, NC 27601 USA  
(703) 674-1365  
miriam.brodie@kimley-horn.com  
www.kimley-horn.com

Kimley-Horn is one of the nation's premier planning and design consulting firms with more than 4,200 staff members in 90 offices across the US. Kimley-Horn's staff is comprised of transportation planners; civil, structural, electrical, and roadway engineers; landscape architects; environmental professionals; construction-phase specialists; and more. Always focused on the success of our clients, we are known for delivering the ideal creative solution. With Kimley-Horn, not only do you have a one-stop consultant, you have the resources of a national firm and the understanding of a local company.

### Langan Engineering & Environmental Services

Michele O'Connor

Principal

300 Kimball Drive  
Parsippany, NJ 07054 USA  
info@langan.com  
www.langan.com

Founded in 1970 and headquartered in Parsippany, N.J., Langan (www.langan.com) provides environmental and engineering consulting services for private developers, property owners, energy companies, and public

sector clients. Langan employs nearly 1,500 professionals and has 32 regional offices in New Jersey, New York, Pennsylvania, Connecticut, Massachusetts, Virginia, Washington, DC, Ohio, Illinois, Florida, Texas, Arizona, Colorado, Washington, and California. The firm has operated as a carbon-neutral business since 2018, and consistently ranks on Zweig Group's Best Firms to Work For and Hot Firms lists. Langan International, the firm's wholly-owned subsidiary based in New York, provides all technical disciplines from offices in Athens, Dubai, Calgary, London, and Panama.

### Ryan Companies

Jackie Christopher

Director, National Build-to-Suit  
533 S. Third Street, Suite 100  
Minneapolis, MN 55415 USA  
(612) 492-4000  
jackie.christopher@  
ryancompanies.com  
www.ryancompanies.com

At Ryan Companies, we believe the value of the buildings we design, develop, finance, manage and construct is about more than dollars and cents - it's also about the value they bring to the people who use them and the communities that surround them. That's why we focus first on the "why" so we can give life to your vision and achieve the best possible outcome. As a national leader in commercial real estate services, we know that our customers are as unique as their projects. That's why, day after day, we're driven to uncover their stories. To be inspired by what inspires them. To bring the right people to the table so we can collaborate on a deeper, more engaging level. Together, we build something far more profound than the physical presence of a building. We build the backdrops to life's stories.

### Suffolk Construction

Nick Dhimitri

Executive Vice President,  
External Affairs

One Pennsylvania Plaza, Suite 5500  
New York, NY 10119 USA  
(646) 952-8084  
ndhimitri@suffolk.com  
www.suffolk.com

Suffolk is a national enterprise that builds, invests, and innovates. We are an end-to-end business that provides value throughout the entire project lifecycle by leveraging our core construction management services with vertical service lines that include real estate capital investment, design, self-perform construction services, technology start-up investment and innovation research/development. Suffolk is a national company with \$4.5 billion in annual revenue, 2,400 employees and main offices in Boston (headquarters), New York, Miami, West Palm Beach, Tampa, Estero, Dallas, Los Angeles, San Francisco, and San Diego. Suffolk serves clients in every major industry sector, including healthcare, science and technology, education, gaming, transportation/aviation, and commercial. We are privately held and led by founder, chairman and CEO John Fish. Suffolk is ranked #23 on the Engineering News Record list of "Top 400 Contractors" and we are a 2020 nationally certified "Great Place to Work" by the Great Place to Work Institute.

### Ware Malcomb

Maria Rogers

PR & Communications Manager  
10 Edelman  
Irvine, CA 92618 USA  
(949) 788-4163  
mrogers@waremalcomb.com  
http://waremalcomb.com/

Established in 1972, Ware Malcomb is a contemporary and expanding full service design firm providing professional architecture, planning, interior design, civil engineering, branding and building measurement services to corporate, commercial/residential developer and public/institutional clients throughout the world. With office locations throughout the United States, Canada and Mexico, the firm specializes in the design of commercial office, corporate, industrial, science & technology, healthcare, retail, auto, public/institutional facilities and renovation projects.

## BROKERAGE

### Amwins Brokerage of the Midwest, LLC

Kevin Zinter

Executive Vice President  
10 S LaSalle St., Suite 2000  
Chicago, IL 60603 USA  
(312) 601-9366  
kevin.zinter@amwins.com  
www.amwins.com

As a leading global specialty insurance distributor, Amwins brings decades of experience and an expansive global network to deliver creative solutions to your clients' complex insurance challenges.

### Maximum

Tom Hagan

Chief Financial Officer  
222 South Riverside Plaza,  
Suite 2340  
Chicago, IL 60606 USA  
(312) 559-0921  
tomh@maxib.com  
www.maxib.com

"Take it to the Max" is our tagline but it really sums up what Maximum is all about. Our team will seek, source and leverage top-tier capabilities and trusted relationships with carriers to provide our clients choices and the best-priced solutions. Everything we do is geared to improve and expedite the service that we deliver to our clients. We leverage technology to maintain the highest level of communication to keep you informed and in control during the brokerage process. At Max, there is no limit to what we can do.

### NAI Global

Michelle Braga DeSanti

Vice President, Program  
Management

717 Fifth Avenue, 15th Floor  
New York, NY 10022 USA  
(212) 405-2500  
info@naiglobal.com  
www.naiglobal.com

NAI Global is a leading global commercial real estate brokerage firm. NAI Global offices are leaders in their local markets and work in unison to provide clients with exceptional solutions to their commercial real estate needs. NAI Global has more than 375 offices strategically located throughout

## PARTNERS

North America, Latin America, Europe, Africa and Asia Pacific, with over 6,000 local market professionals, managing in excess of 1.15 billion square feet of property and facilities. Annually, NAI Global completes in excess of \$20 billion in commercial real estate transactions throughout the world.

### COMMERCIAL LENDING

#### KeyBank Real Estate Capital

**Lisa Lombardo**

Vice President

100 Public Square

Cleveland, OH 44113 USA

(801) 201-0107

[lisa\\_k\\_lombardo@keybank.com](mailto:lisa_k_lombardo@keybank.com)

[www.key.com/realestate](http://www.key.com/realestate)

KeyBank Real Estate Capital is a leading provider of commercial real estate finance. Its professionals, located across the country, provide a broad range of financing solutions on both a corporate and project basis. The group provides interim and construction financing, permanent mortgages, commercial real estate loan servicing, investment banking and cash management services for virtually all types of income producing commercial real estate. As a Fannie Mae Delegated Underwriter and Servicer, Freddie Mac Optigo Seller/Servicer and FHA approved mortgagee, KeyBank Real Estate Capital offers a variety of agency financing solutions for multifamily properties, including affordable housing, seniors housing and student housing. KeyBank Real Estate Capital is also one of the nation's largest and highest rated commercial mortgage servicers.

### COMMERCIAL REAL ESTATE ASSOCIATIONS

#### SIOR

#### Society of Industrial and Office Realtors

**Robert Thornburgh, SIOR, CCIM, FRICS**

Chief Executive Officer

1201 New York Ave., NW, Ste. 350

Washington, DC 20005-6126 USA

(202) 449-8202

[rthornburgh@sior.com](mailto:rthornburgh@sior.com)

[www.sior.com](http://www.sior.com)

The SOCIETY OF INDUSTRIAL AND OFFICE REALTORS® is the leading global professional

office and industrial real estate association. With 3,700 members in 45 countries and 722 cities, SIOR represents today's most knowledgeable, experienced, and successful commercial real estate brokerage specialists.

### COMMERCIAL REAL ESTATE SERVICES

#### Avison Young

**Joan Skelton**

Global Director, Diversity and Inclusion

30 Ivan Allen Jr Blvd, Suite 900

Atlanta, GA 30308 USA

(404) 865-3683

[joan.skelton@avisonyoung.com](mailto:joan.skelton@avisonyoung.com)

[www.avisonyoung.com](http://www.avisonyoung.com)

Avison Young is the world's fastest-growing commercial real estate services firm. Headquartered in Toronto, Canada, Avison Young is a collaborative, global firm owned and operated by its Principals. Founded in 1978, with legacies dating back more than 200 years, the company comprises approximately 5,000 real estate professionals in 108 offices in 15 countries. The firm's experts provide value-added, client-centric investment sales, leasing, advisory, management and financing services to clients across the office, retail, industrial, multi-family and hospitality sectors.

#### CBRE Group, Inc.

**Toya Everett**

Director, Enterprise Programs

Diversity, Equity & Inclusion Team

Corporate Responsibility Office

C: (704) 302-7320

[Toya.Everett@cbre.com](mailto:Toya.Everett@cbre.com)

[www.cbre.com](http://www.cbre.com)

CBRE Group, Inc. is the world's largest commercial real estate services and investment firm, with 2020 revenues of \$23.8 billion and more than 100,000 employees (excluding affiliate offices). CBRE has been included on the Fortune 500 since 2008, ranking #128 in 2020. It also has been voted the industry's top brand by the Lipsey Company for 20 consecutive years and has been named one of Fortune's "Most Admired Companies" for nine years in a row, including being ranked number one in the real estate sector in 2021, for the third consecutive year. Its shares trade

on the New York Stock Exchange under the symbol "CBRE".

#### Cereus Asset Services

**Jeanette Flory-Sagan**

President

2700 NW Pinecone Dr, #307

Issaquah, WA 98027 USA

(301) 767-6823

[jflory@CereusRE.com](mailto:jflory@CereusRE.com)

[www.CereusRE.com](http://www.CereusRE.com)

Cereus is a privately held advisory firm dedicated to customized and solutions-driven services. We advise a wide range of clients from institutional owners to holders of smaller asset portfolios. Our services—such as transitioning newly acquired assets, resolving significant challenges from leaseups, strategizing on litigation matters, and overseeing the use of third-party service providers—are customized and solution-driven.

#### Colliers

**Karen Whitt**

President, Real Estate

Management Services | US

1625 I Street NW, Suite 700

Washington, DC 20006 USA

(703) 650-5709

[Karen.whitt@colliers.com](mailto:Karen.whitt@colliers.com)

[www.colliers.com](http://www.colliers.com)

Colliers (NASDAQ, TSX: CIGI) is a leading diversified professional services and investment management company. With operations in 62 countries, our 17,000 enterprising professionals work collaboratively to provide expert real estate and investment advice to clients. For more than 27 years, our experienced leadership with significant inside ownership has delivered compound annual investment returns of 20% for shareholders. With annual revenues of \$4.3 billion and \$57 billion of assets under management, Colliers maximizes the potential of property and real assets to accelerate the success of our clients, our investors and our people.

#### Cresa

**Kathryn Ditmars**

CHRO and General Counsel

150 N. Wacker Drive Suite 2900

Chicago, IL 60606 USA

(312) 376-4100

[kditmars@cresa.com](mailto:kditmars@cresa.com)

[www.cresa.com](http://www.cresa.com)

Cresa is the world's most trusted occupier-centric commercial real estate firm. We strategize for the best possible results for occupiers everywhere. We think beyond space. Partner without conflict. And apply our integrated expertise to make your business better.

#### Cushman & Wakefield

**Shauna Thompson**

Director, ERG & External

Partnerships

1290 Avenue of the Americas

New York, NY 10104 USA

(212) 698-5529

[Shauna.Thompson@cushwake.com](mailto:Shauna.Thompson@cushwake.com)

<http://cushmanwakefield.com>

Cushman & Wakefield (NYSE: CWK) is a leading global real estate services firm that delivers exceptional value for real estate occupiers and owners. Cushman & Wakefield is among the largest real estate services firms with approximately 50,000 employees in over 400 offices and approximately 60 countries. In 2021, the firm had revenue of \$9.4 billion across core services of property, facilities and project management, leasing, capital markets, and valuation and other services.

#### Cushman & Wakefield | PICOR

**Barbi Reuter, RPA**

Chief Executive Officer/Principal

5151 E Broadway, Suite 115

Tucson, AZ 85711 USA

(520) 546-2744

[breuter@picor.com](mailto:breuter@picor.com)

[www.picor.com](http://www.picor.com)

Cushman & Wakefield | PICOR is the market leader for Tucson commercial real estate. Employee owned and founded in 1985, we offer commercial real estate sales, leasing, and property management for office, medical, retail, industrial, land and investment properties in Southern Arizona and Sonora, Mexico. Our clients benefit from the combined resources of our local expertise and Cushman & Wakefield's global services platform.

## PARTNERS

### JLL

#### Susan Hill

Senior Managing Director  
JLL Capital Markets  
4200 Westheimer Rd, Suite 1400  
Houston, TX 77027 USA  
T: +1 713-852-3564  
M: +1 713-824-2299  
Susan.Hill@am.jll.com

A member of the Fortune 500, JLL (Jones Lang LaSalle Incorporated) is a leading professional services firm that specializes in real estate and investment management. JLL shapes the future of real estate for a better world by using the most advanced technology to create rewarding opportunities, amazing spaces and sustainable real estate solutions for our clients, our people and our communities. JLL is characterized by its growth orientation, operational excellence, financial strength, premium brand, collaborative culture and high ethical standards.

### Lee & Associates

#### Pamela Murphy Indihar

Director of Marketing & PR  
26565 W Agoura Road, Suite 200  
Calabasas, CA 91302 USA  
pmurphy@lee-associates.com  
www.lee-associates.com

Lee & Associates offers an array of real estate services tailored to meet the needs of the company's clients, including commercial real estate brokerage, integrated services, and construction services. Established in 1979, Lee & Associates is now an international firm with offices throughout the United States and Canada. Our professionals regularly collaborate to make sure they are providing their clients with the most advanced, up-to-date market technology and information.

### Marcus & Millichap

#### Michelle Cocagne

Senior Vice President  
2121 N. California Blvd., Suite 780  
Walnut Creek, CA 94596 USA  
(925) 953-1715  
mcocagne@marcusmillichap.com  
www.marcusmillichap.com

Marcus & Millichap, Inc. is a leading brokerage firm specializing in commercial real estate investment sales, financing, research and advisory services with offices

throughout the United States and Canada. As of December 31, 2021, the company had 1,994 investment sales and financing professionals in 82 offices who provide investment brokerage and financing services to sellers and buyers of commercial real estate. The company also offers market research, consulting and advisory services to clients. Marcus & Millichap closed 13,255 transactions in 2021, with a sales volume of approximately \$84.4 billion.

### Savills

#### Dean Feratovic

Senior Vice President,  
Chief Human Resources Officer  
399 Park Avenue, Floor 5  
New York, NY 10022 USA  
(212) 326-1068  
dferatovic@savills.us  
www.savills.us

Founded in the UK in 1855, Savills is one of the world's leading property agents. Our experience and expertise spans the globe, with more than 700 offices across the Americas, Europe, Asia Pacific, Africa and the Middle East. Our scale gives us wide-ranging specialist and local knowledge, and we take pride in providing best-in-class advice as we help individuals, businesses and institutions make better property decisions.

### SRS Real Estate Partners

#### Enid Husby

Vice President, HR & Principal  
8144 Walnut Hill Lane, Suite 1200  
Dallas, TX 75231 USA  
(214) 560-3275  
enid.husby@srsre.com  
https://srsre.com/

Founded in 1986, SRS Real Estate Partners is building upon its retail foundation to provide extensive commercial real estate solutions to tenants, owners, and investors. Headquartered in Dallas, with more than 25 offices in the U.S., SRS has grown into one of the industry's most influential and respected leaders. Our commitment to excellence is strengthened by our Guarantee of Value and our success is measured in the achievement of our clients' objectives, satisfaction, and trust.

### Transwestern

#### Kim Croley

EVP, National Marketing &  
Communications  
1900 West Loop South, Suite 1300  
Houston, TX 77027 USA  
(713) 272-1212  
kim.croley@transwestern.com  
www.transwestern.com

Transwestern Development Company (TDC®) creates value through the execution of development projects for itself, its partners and valued clients throughout the United States. Part of the Transwestern companies, the diversified business develops logistics, multifamily, office, mixed-use and healthcare properties, with a pipeline of projects in process or completed since 2012 exceeding \$9.07 billion.

The privately held Transwestern companies have been delivering a higher level of personalized service and innovative real estate solutions since 1978. Through an integrated, customized approach that begins with good ideas, the firm drives value for clients across commercial real estate services, development, and investment management. Operating from 33 U.S. offices, Transwestern extends its platform capabilities globally through strategic alliance partners whose unique geographic, cultural, and business expertise fuels creative solutions.

## CORPORATE REAL ESTATE

### Amazon

#### Maria Poyer

Senior Development Manager -  
Strategic Property Program (SPP)  
World-Wide Operations Real  
Estate (WWRE)  
+1 408-839-5425  
Marpoyer@amazon.com  
www.amazon.com

Amazon is guided by four principles: customer obsession rather than competitor focus, passion for invention, commitment to operational excellence, and long-term thinking. Amazon strives to be Earth's Most Customer-Centric Company, Earth's Best Employer, and Earth's Safest Place to Work. Customer reviews, 1-Click shopping, personalized

recommendations, Prime, Fulfillment by Amazon, AWS, Kindle Direct Publishing, Kindle, Career Choice, Fire tablets, Fire TV, Amazon Echo, Alexa, Just Walk Out technology, Amazon Studios, and The Climate Pledge are some of the things pioneered by Amazon. For more information, visit [amazon.com/about](https://amazon.com/about) and follow @AmazonNews.

### Walmart Realty

#### Karen Slatton

Senior Director, Industrial Design  
& Construction  
2608 J Street  
Bentonville, AR 72716-5570 USA  
(479) 360-4207  
karen.slatton@walmart.com  
www.walmartrealty.com

Walmart Inc. (NYSE: WMT) helps people around the world save money and live better - anytime and anywhere - in retail stores, online, and through their mobile devices. Each week, approximately 230 million customers and members visit more than 10,500 stores and numerous eCommerce websites under 46 banners in 24 countries. With fiscal year 2022 revenue of \$573 billion, Walmart employs approximately 2.3 million associates worldwide. Walmart continues to be a leader in sustainability, corporate philanthropy and employment opportunity.

## FINANCIAL SERVICES

### Capital One Commercial Bank

#### Kate Byford

Senior Vice President,  
Head of Agency Finance  
2 Bethesda Metro Center, 10th Floor  
Bethesda, MD 20814 USA  
(704) 622-3862  
kate.byford@capitalone.com  
www.capitalone.com/commercial/  
industry-expertise/commercial-  
real-estate/

Capital One Financial Corporation ([www.capitalone.com](https://www.capitalone.com)) is a financial holding company whose subsidiaries, which include Capital One, N.A., and Capital One Bank (USA), N.A., had \$313.4 billion in deposits and \$434.2 billion in total assets as of March 31, 2022. Headquartered in McLean, Virginia,

## PARTNERS

Capital One offers a broad spectrum of financial products and services to consumers, small businesses and commercial clients through a variety of channels. Capital One, N.A. has branches located primarily in New York, Louisiana, Texas, Maryland, Virginia, New Jersey and the District of Columbia. A Fortune 500 company, Capital One trades on the New York Stock Exchange under the symbol "COF" and is included in the S&P 100 index.

### CIBC

**Elizabeth Gooch**  
Managing Director  
US Commercial Real Estate  
CIBC Bank USA  
120 S LaSalle  
Chicago, IL 60603 USA  
elizabeth.gooch@cibc.com  
www.us.cibc.com

CIBC U.S. provides tailored commercial, wealth management, personal, and small business financial solutions as well as cross-border banking services to clients with North American operations. Our U.S. headquarters is in Chicago, and we're backed by a 150-year-old Toronto-based, global financial institution. We invest in our businesses, our clients, our people and our communities. We strive to build trusting and enduring relationships by putting our clients at the center of all we do. We use our values to guide our decisions, actions and interactions with our clients, our team members and our communities.

### Citi Realty Services

**Linda Foggie**  
Managing Director,  
Global Head of Operations  
388 Greenwich Street Floor 19  
New York, NY 10013 USA  
Linda.Foggie@citi.com  
www.citigroup.com/global

Citi is a preeminent banking partner for institutions with cross-border needs, a global leader in wealth management and a valued personal bank in its home market of the United States. Citi does business in nearly 160 countries and jurisdictions, providing corporations, governments, investors, institutions and individuals with a broad range of financial products and services.

### First Women's Bank

**Colleen Ryan**  
Chief Marketing &  
Communications Officer  
1308 N Elston Ave Suite 100  
Chicago, IL 60642  
(312) 690-4522  
cryan@firstwomens.bank  
www.firstwomens.bank/

First Women's Bank is uniquely positioned to serve the women's economy. It's in our DNA. First Women's Bank is the only women-founded, women-owned and women-led commercial bank in the country with a strategic focus on the women's economy. Our clients are entrepreneurs, innovators and leaders—moms, daughters and caregivers. So are we.

### Lument

**Laca Wong-Hammond**  
Managing Director, Head of M&A  
230 Park Avenue, 20th Floor  
New York, NY 10169  
212-317-5700  
laca.wong-hammond@lument.com  
www.lument.com

At Lument, we specialize in delivering financial solutions that advance our clients' ability to realize their financial and operational goals. We bring to the table a sophisticated appreciation for the intricacies of multifamily and seniors housing and healthcare finance, a well-rounded product set, and a determination to provide the best possible outcome for the transaction regardless of the size of your investment.

### Wells Fargo Commercial Real Estate

**Nichole Kelley**  
Senior Lead Control  
Management Officer  
Commercial Real Estate Control  
301 S. College Street, 12th Floor  
Charlotte, NC 28202 USA  
Nichole.Kelley@wellsfargo.com  
www.wellsfargo.com/realestate

Wells Fargo & Company (NYSE: WFC) is a leading financial services company that has approximately \$1.9 trillion in assets, proudly serves one in three U.S. households and more than 10% of small businesses in the U.S., and is a leading middle market banking provider in the U.S. We provide a diversified set of

banking, investment, and mortgage products and services, as well as consumer and commercial finance, through our four reportable operating segments: Consumer Banking and Lending, Commercial Banking, Corporate and Investment Banking, and Wealth & Investment Management. Wells Fargo ranked No. 37 on Fortune's 2021 rankings of America's largest corporations. In the communities we serve, the company focuses its social impact on building a sustainable, inclusive future for all by supporting housing affordability, small business growth, financial health, and a low-carbon economy.

### INFORMATION, DATA, TECHNOLOGY and SOFTWARE SERVICES

#### Altus Group

**Emily Haggarty**  
Head of Field Marketing -  
North America  
24691 Tabuena  
Mission Viejo, CA 92692 USA  
(703) 635 2921  
emily.haggarty@altusgroup.com  
www.altusgroup.com

Altus provides the global commercial real estate industry with vital actionable intelligence solutions driven by our de facto standard ARGUS technology, unparalleled asset level data, and market leading expertise.

A market leader in providing Intelligence as a Service, Altus empowers CRE professionals to make well-informed decisions with greater speed and scale to maximize returns (increase alpha) and reduce risk (minimize beta). Trusted by most of the world's largest CRE leaders, our solutions for the valuation, performance, and risk management of CRE assets are integrated into workflows critical to success across the CRE value chain. Founded in 2005, Altus is a publicly-traded (TSX: AIF), global company with approximately 2,600 employees across North America, EMEA and Asia Pacific.

### CoStar Group, Inc.

**Floyd Mills**  
Vice President - Diversity, Equity  
and Inclusion  
1331 L Street NW  
Washington, DC 20005 USA  
(202) 346-5670  
fmills@costar.com  
www.costar.com/

CoStar Group, Inc. (NASDAQ: CSGP) is a leading provider of online real estate marketplaces, information and analytics. Founded in 1987, CoStar conducts expansive, ongoing research to produce and maintain the largest and most comprehensive database of commercial real estate information. Our suite of online services enables clients to analyze, interpret and gain unmatched insight on commercial property values, market conditions and current availabilities.

### Crexi

**Courtney Ettus**  
Chief Marketing Officer  
5510 Lincoln Blvd, Suite 400  
Los Angeles, CA 90094 USA  
(888) 273-0423  
www.crexi.com

Commercial Real Estate Exchange, Inc. (Crexi) is revolutionizing the way commercial real estate professionals transact by accelerating deal velocity and democratizing access to both properties and industry data. In 2015, Crexi embarked on a journey to transform the CRE industry: to create a single-source hub for stakeholders to market, analyze, and trade commercial property. Today, Crexi empowers nearly 2 million buyers, brokers, and tenants each month to explore over \$2 trillion of property value nationwide and has helped to close upward of \$330 billion in transactions. Crexi's growing team of 225+ employees – based in Los Angeles with offices in Miami, New York, Dallas, Phoenix, and Raleigh – strive to create a centralized CRE marketplace with enhanced marketing, due diligence, and deal-closing tools to accelerate our users' success.

## PARTNERS

### DISH Fiber

Eva Wai

Commercial Partner Manager  
4223 Fairgrounds St.  
Riverside CA 92501 USA  
(951) 201-3544  
eva.wai@dish.com  
www.dish.com/

DISH Network Corporation is a connectivity company. Since 1980, it has served as a disruptive force, driving innovation and value on behalf of consumers. Through its subsidiaries, the company provides television entertainment and award-winning technology to millions of customers with its satellite DISH TV and streaming SLING TV services. In 2020, the company became a nationwide U.S. wireless carrier through the acquisition of Boost Mobile. DISH continues to innovate in wireless, building the nation's first virtualized, O-RAN 5G broadband network. DISH Network Corporation (NASDAQ: DISH) is a Fortune 200 company.

### Juniper Square

Tony Loos

Head of Field Marketing  
343 Sansome Street  
San Francisco, CA 94104 USA  
(510) 502-5828  
tony.loos@junipersquare.com  
www.junipersquare.com

Founded in 2014, Juniper Square is transforming private equity with innovative software and solutions that deliver a more modern, efficient and effective approach to managing private partnerships. Designed to provide real-time information and workflow for all parties involved in a private partnership, Juniper Square enables forward-thinking GPs to lower administrative costs, increase investor satisfaction, and raise more capital. Trusted by over 1,200 GPs to manage more than 200,000 investors and \$1.5 trillion in assets, Juniper Square has quickly become the leading provider of investment management solutions for commercial real estate. The company was recognized as an Inc. 5000 2021 Fastest-Growing Company in America, a Deloitte Technology Fast 500 Company, and was named one of Forbes' Best Startup Employers.

### LightBox

Dianne Crocker

Principal Analyst  
5201 California Ave., Suite 200  
Irvine, CA 92617 USA  
(800) 555-5566  
sales@lightboxre.com  
www.lightboxre.com

LightBox is the world's leading real estate information and technology platform. Through operational excellence and a passion for innovation, LightBox facilitates transparency, efficiency, insight, and prediction for real estate investment and location analytics. LightBox customers include commercial and government agencies requiring definitive real estate data and powerful workflow solutions, including brokers, developers, investors, lenders, insurers, technology providers, environmental consultants, and valuation professionals. LightBox is backed by Silver Lake and Battery Ventures.

## INVESTING BROKERAGE

### B+E

Camille Renshaw  
CEO & Co-Founder  
41 Madison Avenue, Floor 31  
New York, NY 10010 USA  
(646) 770-0659  
info@tradenetlease.com  
<https://tradenetlease.com/>

B+E is a modern investment brokerage firm, specializing in net lease real estate and 1031 exchanges. We help clients buy and sell single tenant real estate. Founded by deeply experienced brokers, B+E redefines trading through an intuitive end-to-end transaction platform comprising of user-friendly dashboards and an AI-driven exchange—all leveraging the largest data set in the net lease industry.

## INVESTMENT MANAGEMENT

### BentallGreenOak

Kim Addy

Principal, Investments  
1201 Third Avenue, Suite 3000  
Seattle, WA 98101 USA  
(206) 694-8872  
kim.addy@bentallgreenoak.com  
www.bentallgreenoak.com

BentallGreenOak is a leading, global real estate investment management advisor and a globally-recognized provider of real estate services. BentallGreenOak serves the interests of more than 750 institutional clients with expertise in the asset management of office, industrial, multi-residential, retail and hospitality property across the globe. BentallGreenOak has offices in 27 cities across thirteen countries with deep, local knowledge, experience, and extensive networks in the regions where we invest in and manage real estate assets on behalf of our clients in primary, secondary and co-investment markets. BentallGreenOak is a part of SLC Management, which is the institutional alternatives and traditional asset management business of Sun Life.

### Berkadia

Moira Byrne

Vice President, Marketing & PR  
323 Norristown Road, Suite 300  
Ambler, PA 19002  
(215) 328-1752  
moira.byrne@berkadia.com  
www.berkadia.com

Berkadia is a leader in the commercial real estate industry, offering a robust suite of services to our multifamily and commercial property clients. Powered by deep relationships and industry-changing technology, our people sell, finance, and service commercial real estate, providing support for the entire life cycle of our clients' assets. Our unique ownership structure allows us to put our clients' interests first and create a marketplace that delivers a superior experience.

### Ares Management Corporation

Andrea Karp

Managing Director  
517 17th Street, Suite 1700  
Denver, CO 80202 USA  
(303) 869-4600  
www.aresmgmt.com

Ares Management Corporation (NYSE: ARES) is a leading global alternative investment manager offering clients complementary primary and secondary investment solutions across the credit, private equity, real estate and infrastructure

asset classes. We seek to provide flexible capital to support businesses and create value for our stakeholders and within our communities. By collaborating across our investment groups, we aim to generate consistent and attractive investment returns throughout market cycles. As of March 31, 2022, Ares Management Corporation's global platform had approximately \$325 billion of assets under management, with approximately 2,100 employees operating across North America, Europe, Asia Pacific and the Middle East.

### NorthMarq

JoAnn Neau

Chief Marketing Officer  
3500 American Blvd. West,  
Suite 500  
Minneapolis, MN 55431 USA  
(952) 247-2807  
jneau@northmarq.com  
www.northmarq.com

Northmarq is an industry-leading capital markets resource for commercial real estate investors, offering seamless collaboration with top experts in debt, equity, investment sales, and loan servicing. We combine industry-leading capabilities with an open, flexible structure, enabling our team of seasoned professionals to create innovative solutions for clients. Our solid foundation and entrepreneurial approach have built an annual transaction volume of over \$30 billion, and loan servicing of nearly \$70 billion.

### Syndicated Equities

Tracy L. Treger, Esq.

Principal  
350 North LaSalle St., Suite 800  
Chicago, Illinois 60654 USA  
(312) 640-9023  
Tracy@SynEq.com  
www.SynEq.com

Syndicated Equities is a private real estate investment firm that provides its clients with nationwide access to institutional-quality real estate opportunities. We believe that investing in professionally managed real estate is essential to both a well-diversified portfolio and the creation of personal wealth. For over 30 years, our firm has generated attractive returns for

## PARTNERS

its clients through our expertise in evaluating, structuring and actively managing real estate investments. These investments include stabilized retail, office, parking, government, hotel, and credit tenant net leased properties. The principals of Syndicated Equities invest alongside our clients in each property, reflecting our careful due diligence, alignment of interests, and personal commitment to the success of our investments. Syndicated Equities also works closely with investors completing 1031 Exchanges. Our firm has provided over \$750 million of credit tenant, net leased properties for our investors as either replacement property or as a new equity investment.

### TA Realty

#### Carrie Ferris

Vice President, Human Resources  
One Federal Street, 17th Floor  
Boston, MA 02110  
(617) 476 2766  
ferris@tarealty.com  
www.tarealty.com

One of the largest real estate investment firms in the nation, TA Realty has acquired, invested in, and/or managed over \$39 billion of real estate on behalf of hundreds of U.S. and non-U.S. institutional investors and clients. Our singular focus on domestic real estate investment enables us to build strong local relationships in key markets, resulting in first-look access to opportunities. Delivering value to investors and communities across real estate sectors, our entrepreneurial and collaborative approach prioritizes strong returns for our investors—and our many long-term relationships evidence our commitment to their best interests.

### USAA Real Estate

9830 Colonnade Blvd., Suite 600  
San Antonio, TX 78230 USA  
(800) 531-8182  
info@usrealco.com  
www.usrealco.com

With approximately \$29 billion in assets under management and 11 global offices, USAA Real Estate is an industry leader in acquiring, developing, financing and managing the highest quality real estate assets

in North America and Europe. The mission of USAA Real Estate is to serve the financial interests of its investor clients by strengthening the profitability and diversity of the USAA investment portfolio, which includes multifamily, industrial, office and hotel properties, as well as e-commerce logistics and distribution centers, media production facilities and data centers. Aligned with a series of strategic partnerships cultivated over decades of co-investment, USAA Real Estate engages with preeminent sector leaders demonstrating proven domain expertise in a shared drive to achieve superior, risk-adjusted returns.

### Zeller

#### Sue Pruski

Senior Vice President  
401 N. Michigan Ave., Suite 700  
Chicago, IL 60611 USA  
(312) 229-8968  
spruski@zeller.us  
www.zeller.us

Zeller is a vertically integrated commercial real estate investment and development firm that has offered investors exceptional expertise, innovation, and insight to value for over 35 years. Zeller strategically selects properties for value creation, repositioning and reintroduction to their markets, while maximizing efficiency by providing a full spectrum of real estate services, including development, leasing, management, and construction. Headquartered in Chicago, Illinois, Zeller owns and operates assets in the Colorado, Georgia, Illinois, Indiana, Minnesota, Ohio, Oregon, Texas and Wisconsin and continues to grow and expand its holdings nationally. Since its formation, the company has delivered strong returns for its partners and co-investors by providing best-in-class service to enhance value. Currently, Zeller owns and operates a portfolio of nearly 10.2 million square feet valued at \$2.9 billion.

## LAW

### Akerman LLP

#### Cecilia Bonifay

Chair, Land Use and  
Development Practice  
420 South Orange Avenue,  
Suite 1200  
Orlando, FL 32801 USA  
(407) 419-8540  
cecilia.bonifay@akerman.com  
www.akerman.com

Akerman LLP is a top 100 U.S. law firm recognized among the most forward-thinking firms in the industry by Financial Times. Its more than 700 lawyers and business professionals collaborate with the world's most successful enterprises and entrepreneurs to navigate change, seize opportunities, and help drive innovation and growth.

### Armstrong Teasdale LLP

#### Lynn T. Goessling

Partner  
7700 Forsyth Blvd., Suite 1800  
St. Louis, MO 63105 USA  
(314) 621-5070  
lgoessling@atllp.com  
www.armstrongteasdale.com

For more than a century, Armstrong Teasdale has forged long-term relationships with clients large and small around the globe. Since our founding in 1901, we have grown to be one of the 200 largest law firms in the U.S. Our lawyers work together to guide clients through virtually every challenge, from day-to-day operational decisions to some of the most complex legal matters. See how our experience can benefit you.

### Katten

#### Katten Muchin Rosenman LLP

#### Mary Brancazio

Marketing Events Specialist  
50 Rockefeller Plaza  
New York, NY 10020-1605 USA  
212.940.6543  
mary.brancazio@katten.com  
katten.com

The lawyers that companies need today think like business people first and foremost. Our attorneys really understand your business and approach the law with a commercial sense—to get the deal done or the case resolved. We provide

strategic and creative solutions, but offer pragmatic advice that keeps your business objectives top-of-mind. And we forge collegial and collaborative partnerships with our clients to help their businesses succeed. That is why companies hire Katten. Our philosophy remains centered around the same principles that guided the firm's founding: A desire to be nimble, strategic, creative and client-centric. Most importantly, a desire to be different.

### Locke Lord LLP

#### Vicky Gunning

Partner, Co-Chair of Finance,  
Banking and Real Estate Dept.  
2200 Ross Avenue, Suite 2800  
Dallas, TX 75201 USA  
(214) 740-8638  
VGunning@lockelord.com  
www.lockelord.com/

Locke Lord is a premier fullservice Am Law 100 law firm that has earned a solid reputation for complex litigation, regulatory and transactional work on behalf of clients in important and growing industry sectors around the world. Throughout our more than 130-year history, we've cultivated partnerships with a broad range of public and private companies, from Fortune 500 leaders to startups and emerging businesses.

### Perkins Coie

#### Alexandra Cole

Partner  
131 S. Dearborn Street, Suite 1700  
Chicago, IL 60603 USA  
(312) 324-8686  
ACole@perkinscoie.com  
www.perkinscoie.com

Perkins Coie is a leading international law firm that is known for providing high-value, strategic solutions and extraordinary client service on matters vital to our clients' success. With more than 1,200 lawyers in offices across the United States and Asia, we provide a full array of corporate, commercial litigation, intellectual property and regulatory legal advice to a broad range of clients, including many of the world's most innovative companies and industry leaders as well as public and not-for-profit organizations.

## PARTNERS

### **Polsinelli**

#### **Kelly Greco**

Shareholder

150 N. Riverside Plaza, Suite 3000  
Chicago, IL 60606 USA  
(312) 873-2972  
kgreco@polsinelli.com  
polsinelli.com

Polsinelli is an Am Law 100 firm with more than 1,000 attorneys in 22 offices nationwide. Recognized as one of the top firms for excellent client service and client relationships, Polsinelli is committed to meeting our clients' expectations of what a law firm should be. Our attorneys provide value through practical legal counsel infused with business insight, offering comprehensive corporate, transactional, litigation and regulatory services with a focus on health care, real estate, finance, technology, private equity and life sciences. Polsinelli PC, Polsinelli LLP in California, Polsinelli PC (Inc) in Florida.

### **Quarles & Brady LLP**

#### **Susan Matejcek**

Partner

300 N. LaSalle Street, Suite 4000  
Chicago, IL 60654-3406 USA  
(312) 715-5016  
Susan.Matejcek@quarles.com  
www.quarles.com

For 125 years, Quarles & Brady LLP has provided quality legal services to a wide range of industries on a national stage. We've strived to learn our clients' businesses—to see the horizons through their eyes. We don't just counsel, but invest in the success of each client, partnering with them to achieve their business goals. This dedication and investment is what sets Quarles & Brady apart: we provide a true partnership, in every sense of the word. Quarles & Brady is a multidisciplinary AmLaw 200 legal services provider with approximately 520 attorneys practicing at the top of the profession in Chicago, Denver, Indianapolis, Madison, Milwaukee, Minneapolis, Naples, Phoenix, San Diego, Tampa, Tucson, and Washington, D.C. Our national presence allows us to draw upon a group of highly skilled attorneys from all across the country to ensure the right people are working on our clients' matters. We have extensive experience working with the full industrial gamut, from cutting-

edge technology to traditional manufacturing, and we have developed an extensive network of relationships with international legal counsel around the world, allowing us to effectively handle important matters for our clients on a global scale.

### **Seed Jura**

#### **Phyllis Shuster**

Chief Team Intelligence Officer &  
Executive Legal Managing Director  
(561) 301-7876  
phyllis@seedjura.com  
www.seedjuragroup.com

The word "SeedJura" has two parts - Jura and Seed. "Jura" means laws and rights. "Seed" reflects that our legal technology platforms are "seeds" for (1) more businesses and individuals to have access to legal services; and (2) lawyers and other legal professionals to have more options to grow professionally and connect with and serve clients without compromising health and well-being.

### **Seyfarth Shaw LLP**

#### **Christa Dommers**

Partner

233 S. Wacker Drive, Suite 8000  
Chicago, IL 60606 USA  
(202) 828-3521  
cdommers@seyfarth.com  
www.seyfarth.com

With approximately 900 lawyers across 17 offices, Seyfarth Shaw LLP provides advisory, litigation, and transactional legal services to clients worldwide. Our high-caliber legal representation and advanced delivery capabilities allow us to take on our clients' unique challenges and opportunities—no matter the scale or complexity. Whether navigating complex litigation, negotiating transformational deals, or advising on cross-border projects, our attorneys achieve exceptional legal outcomes.

### **Williams Mullen**

#### **Alyssa Carducci Dangler**

Partner

Dominion Tower  
999 Waterside Drive, Suite 1700  
Norfolk, VA 23510 USA  
(757) 629-0631  
adangler@williamsmullen.com  
www.williamsmullen.com/

Williams Mullen is a regional, full-

service law firm with approximately 240 attorneys in offices across North Carolina, South Carolina and Virginia. Since our firm began in 1909, our goal has been to provide business and legal solutions to help our clients' businesses thrive. While we excel within our mid-Atlantic footprint, our clients find that they increasingly come to us for their legal needs across the United States and internationally.

## MANUFACTURING

### **Shaw Industries Group Inc.**

#### **Jason B. Hitchcock**

Vice President Global Accounts  
Shaw Commercial  
616 East Walnut Ave.  
Dalton, GA 30721 USA  
(615) 300-3282  
jason.hitchcock@shawinc.com  
https://shawinc.com/

Shaw Industries Group, Inc. supplies carpet, resilient, hardwood, laminate, tile and stone, synthetic turf and other specialty products to residential and commercial markets worldwide. We are a wholly owned subsidiary of Berkshire Hathaway, Inc. with more than 20,000 associates worldwide. Shaw is headquartered in Dalton, Georgia, with salespeople and/or offices located throughout the U.S. as well as Australia, Belgium, Brazil, Canada, Chile, China, France, India, Mexico, Singapore, United Arab Emirates and the United Kingdom.

## MOBILITY PRODUCTS & SERVICES

### **TK Elevator**

#### **Gary Medeiros**

President & CEO, Canada  
2075 Kennedy Road, Suite 600  
Scarborough, ON M1T 3V3 CAN  
+1(800)233-5757  
gary.medeiros@tkelevator.com  
www.tkelevator.com/ca

With customers in over 100 countries served by more than 50,000 employees, TK Elevator achieved sales of €8.5 billion in fiscal year 2021/2022. We ensure high levels of customer service globally from our extensive network of about 1,000 locations. Over the past several decades, TK Elevator has established itself as one of the world's leading elevator companies and became independent after separation from the thyssenkrupp

group in August 2020. The company's most important business line is the service business proudly provided by around 25,000 service technicians. The product portfolio ranges from standardized elevators for low-rise residential buildings to highly customized solutions for skyscrapers. In addition, it covers escalators, moving walks, passenger boarding bridges and stair and platform lifts. Integrated cloud-based solutions, such as the MAX platform, are delivering enhanced services. With these digital offerings, there are no longer any limits to urban mobility. TKE— move beyond.

## PROGRAM & PROJECT MANAGEMENT

### **Pacific Program**

#### **Management**

#### **Ron Houghtaling**

Vice President,

Marketing & Communications  
600 University St #1920  
Seattle, WA 98101 USA  
Ron.Houghtaling@pacificpmg.com  
www.pacificpmg.com

Pacific Program Management (PPM) began in 2009 in a Seattle home. In the midst of one of the biggest real estate crises in U.S. history, an entrepreneur set out to prove that the commercial real estate industry needed to change. It was time to transform the way project management firms served the industry with a new approach that focused on holistic service. It was time to deliver more than the baseline metrics of success tied to "on time and on budget" goal posts. It was time to challenge the entire way we thought about commercial real estate and the role it plays in how America worked.

## PROPERTY MANAGEMENT

### **Valet Living**

#### **Briana Sellers**

Senior Event Coordinator  
100 South Ashley Drive, Suite 700  
Tampa, FL 33602 USA  
(813) 331-0679  
briana.sellers@valetliving.com  
www.valetliving.com

Valet Living is the only nationally-recognized full-service amenities provider to the multifamily housing



## PARTNERS

industry, performing more than 460 million events annually across 1.8 million apartment homes and 40 states. Through its portfolio of both business to business and resident facing amenities, Valet Living is also the only company in the multifamily industry to combine doorstep waste and recycling collection with both sustainability-related and premium home-related services. Headquartered in Tampa, FL, Valet Living has been setting the standard for residential living since 1995 and is now a portfolio company of the Private Equity Group of GI Partners.

### REAL ESTATE DEVELOPMENT

#### Camden Property Trust

Laurie Baker

Chief Operating Officer  
11 Greenway Plaza, Suite 2400  
Houston, TX 77046 USA  
(713) 354-2500  
lbaker@camdenliving.com  
www.camdenliving.com

Camden Property Trust, an S&P 500 Company, is one of the largest publicly-traded multifamily companies in the United States. Structured as a Real Estate Investment Trust (REIT), the company is primarily engaged in the ownership, management, development, redevelopment, acquisition, and construction of multifamily apartment communities. Camden's workforce totals approximately 1,600 employees and the Company is headquartered in Houston, Texas. As of April 30, 2022, Camden Property Trust owned and operated 170 properties containing 58,055 apartment homes across the United States.

#### Fairstead

Estelle Chan

Director, Development  
250 West 55th Street, 35th Floor  
New York, NY 10019 USA  
(212) 798-4063  
Estelle.Chan@fairstead.com  
fairstead.com

Fairstead is a purpose-driven vertically integrated real estate developer specializing in creating sustainable, high-quality housing. With teams operating around the country, Fairstead owns more than 16,500 apartments in 18 states. Fairstead has acquired, developed

or preserved more than \$4 billion in assets, and is currently working on an identified pipeline of an additional \$2.3 billion in assets around the country.

#### Remington Development Corporation

Gillian Lawrence

General Manager-  
Land Development  
300,200 Quarry Park Boulevard SE  
Calgary, AB T2C 5E3 CAN  
(403) 255-7003  
glawrence@remingtoncorp.com  
www.remingtoncorp.com

Remington Development Corporation is a full-service developer of office, industrial, retail, multifamily properties and a renowned 380-acre mixed-use community. From concept to occupancy, Remington is a leader in design, sustainable development and tenant fulfillment.

#### Rockefeller Group

Brandi Hanback

Executive Vice President  
1271 Avenue of the Americas  
New York, NY 10020 USA  
(212) 282-2000  
bhanback@rockefellergroup.com  
www.rockefellergroup.com

Rockefeller Group is a leading U.S. real estate developer, owner and operator, dedicated to excellence in the built environment. The company has been known for nearly a century for projects that anticipate demand, transform skylines and improve lives, while creating economic and civic value. Our properties and developments promote growth and renewal in cities, neighborhoods and communities, delivering exceptional experiences and performance at home and at work.

#### REIT

#### Broadstone Net Lease, Inc.

Molly Kelly Wiegel

SVP, Human Resources  
800 Clinton Square  
Rochester, NY 14604 USA  
(585) 287-6477  
molly.wiegel@broadstone.com  
www.broadstone.com

Broadstone Net Lease, Inc. (NYSE:BNL) is a REIT that acquires, owns, and manages primarily single-tenant commercial real estate properties that are net

leased on a long-term basis. Since the company's formation in 2007, BNL's investment strategy has been grounded in strong fundamental credit analysis and prudent real estate underwriting. The continued growth and consistent performance of our portfolio has delivered predictable cash flow and returns to investors through multiple real estate cycles. As of March 31, 2022, BNL's diversified portfolio consisted of 752 properties in 43 U.S. states and 4 Canadian provinces across the industrial, healthcare, restaurant, retail, and office property types.

#### Kimco Realty Corporation

Julia Rocco

Senior Director, Asset Management  
500 North Broadway, Suite 201  
Jericho, NY 11753 USA  
(516) 869-7212  
jrocco@kimcorealty.com  
kimcorealty.com

Kimco Realty Corp. (NYSE:KIM) is a real estate investment trust (REIT) headquartered in Jericho, N.Y. that is North America's largest publicly traded owner and operator of open-air, grocery-anchored shopping centers and mixed-use assets. The company's portfolio is primarily concentrated in the first-ring suburbs of the top major metropolitan markets, including those in high-barrier-to-entry coastal markets and rapidly expanding Sun Belt cities, with a tenant mix focused on essential, necessity-based goods and services that drive multiple Listed on the New York Stock Exchange (KIM) NEWS RELEASE iv shopping trips per week. Kimco is also committed to leadership in environmental, social and governance (ESG) issues and is a recognized industry leader in these areas. Publicly traded on the NYSE since 1991, and included in the S&P 500 Index, the company has specialized in shopping center ownership, management, acquisitions, and value enhancing redevelopment activities for more than 60 years.

#### Prologis

Donald Meyer

Senior Manager, Corporate  
Events & Sponsorships  
1800 Wazee Street, Suite 500  
Denver, CO 80202 USA  
(303) 567-5172  
dmeyer@prologis.com  
www.prologis.com

Prologis, Inc., is the global leader in logistics real estate with a focus on high-barrier, high-growth markets. As of March 31, 2022, the company owned or had investments in, on a wholly owned basis or through co-investment ventures, properties and development projects expected to total approximately 1.0 billion square feet (93 million square meters) in 19 countries. Prologis leases modern logistics facilities to a diverse base of approximately 5,800 customers principally across two major categories: business-to-business and retail/online fulfillment.

#### RioCan Real Estate Investment Trust

Jonathan Gitlin

President and Chief Executive  
Officer  
2300 Yonge Street, Suite 500  
Box 2386  
Toronto, ON M4P 1E4 CAN  
1-(800) 465-2733  
www.riocan.com

RioCan is one of Canada's largest real estate investment trusts. RioCan owns, manages and develops retail-focused, increasingly mixed-use properties located in prime, high-density transit-oriented areas where Canadians want to shop, live and work. As at March 31, 2022, our portfolio is comprised of 204 properties with an aggregate net leasable area of approximately 36.2 million square feet (at RioCan's interest) including office, residential rental and 13 development properties.

## PARTNERS

### TITLE/ESCROW/ INSURANCE

#### **Amwins Brokerage of the Midwest, LLC**

**Kevin Zinter**

Executive Vice President  
10 S LaSalle St., Suite 2000  
Chicago, IL 60603 USA  
(312) 601-9366  
kevin.zinter@amwins.com  
www.amwins.com

As a leading global specialty insurance distributor, Amwins brings decades of experience and an expansive global network to deliver creative solutions to your clients' complex insurance challenges.

#### **Boston National Title Agency, LLC**

**Danielle Sprouls, Esq.**

Executive Vice President,  
National Commercial Division  
129 West Trade Street, 9th Floor  
Charlotte, NC 28202 USA  
1415th Ave # 2  
New York, NY 10010 USA  
(646) 379-1044  
dsprouls@BostonNationalTitle.com  
www.bostonnationaltitle.com

Boston National Title enables you to manage your purchase, refinance, second mortgage and equity transactions. Our proven technology will allow same day closing anywhere, anytime by accessing your information when you need it most. Maximize your bottom line by utilizing our extensive selection of real estate settlement services. Boston National Title inspires confidence with our service and quality while building and maintaining trusted relationships with the full line of services we offer.

#### **Fidelity National Financial, Inc.**

**Melissa Hall**

Executive Vice President,  
Regional Manager  
5565 Glenridge Connector, Ste 300  
Atlanta, GA 30342 USA  
(404) 419-3227  
Melissa.Hall@fntg.com  
www.fntg.com

Fidelity National Financial, Inc. (NYSE: FNF) is a leading provider of title insurance and transaction services to the real estate and mortgage industries. FNF is the

nation's largest title insurance company through its title insurance underwriters - Fidelity National Title, Chicago Title, Commonwealth Land Title, Alamo Title, and National Title of New York - that collectively issue more title insurance policies than any other title company in the United States. For more than 170 years, FNF family of companies have provided title insurance and related services for many of the largest and most prestigious real estate transactions, from historic landmarks to modern skyscrapers, hospitals to hotels, and shopping centers to sports arenas.

#### **First American Title National Commercial Services**

**Sally French Tyler**  
EVP, Group President  
3 First American Way  
Santa Ana, CA 92707 USA  
(714) 250-3405  
sftyler@firstam.com  
www.firstam.com/ncs

At First American Title National Commercial Services, our success relies on our ability to get your deals closed. With the nation's brightest commercial real estate experts – from veteran national underwriters to experienced local closers – we have the expertise and resources that get your transaction through the finish line. Every transaction is important, and each deal unique. Regardless of size or complexity, we offer the skill, expertise, products and services you need to close your deal, all from one central touch point. Find out more about our comprehensive products and services—including ClarityFirst™—available from experienced commercial experts right in your local market.

#### **Greater Illinois Title Company**

**Darlene Kosin**  
Senior Vice President  
Commercial and Residential Sales  
120 N La Salle St #900  
Chicago, IL 60602 USA  
Darlene.Kosin@gitc.com  
www.gitc.com

As the largest title agency in Illinois, Greater Illinois Title Company provides a single point of contact for all title and closing related services. Our mission is to view all

customers as partners in business. Customizable products and services provided by experienced professionals help GIT customers attain greater efficiency, tighter production times and forward-thinking responses to smooth out the closing process.

#### **Marsh & McLennan Agency LLC**

**Sue Meyers**

Senior Vice President  
Assurance, A Marsh & McLennan  
Agency LLC Company  
111 North Canal Street, Suite 550  
Chicago, IL 60606 USA  
(847) 463-7151  
Sue.Myers@MarshMMA.com  
www.assuranceagency.com

Marsh McLennan Agency (MMA) provides business insurance, employee health & benefits, retirement, and private client insurance solutions to organizations and individuals seeking limitless possibilities. With 9,000 colleagues and 160 offices across North America, we combine the personalized service model of a local consultant with the global resources of the world's leading professional services firm, Marsh McLennan.

#### **Republic Title of Texas, Inc. Vicki Summerall**

Senior Vice President, Business  
Development  
2626 Howell Street, 10th Floor  
Dallas, TX 75204 USA  
(214) 855-8828  
vsummerall@republictitle.com  
www.republictitle.com/commercial

Republic Title of Texas, Inc., is a full-service title insurance company that handles the transfer of title for our customers' real estate transactions and protects the title to their largest financial investments. With a mission to provide value to every customer that we serve through proven experience, dedicated service and lasting relationships, Republic Title treats each real estate transaction for our home buyers, sellers, lenders and commercial customers with care, professionalism and integrity. We are committed to exceptional, responsive customer service, with a track record of success that is unsurpassed.

#### **Safe Harbor Title Company**

**Melissa A. McPherson**

President  
4900 Augusta Avenue, Suite 150  
Richmond, VA 23230 USA  
(804) 282-2329  
mmcpherson@safeharbortc.com  
https://safeharbortc.com/

Since 2010, Safe Harbor Title Company has guided thousands of commercial and residential clients through successful real estate transactions.



## Chapter Leadership Circle Partners

The Chapter Leadership Circle is a valuable program that allows chapters to sponsor CREW Network. This partnership positions chapters as leaders within CREW Network, gaining year round exposure to corporate sponsors and 75+ markets globally.

### AZCREW

**Heather Fox Skinner**  
2022 Chapter President  
1201 Wakarusa Drive, Suite D  
Lawrence, KS 66049 USA  
(785) 832-1808  
azadmin@arizonacrew.org  
<https://arizonacrew.org>

AZCREW is the premier commercial real estate organization that dominates in the advancement and success of women within the commercial real estate industry through leadership, professional relationships, education and excellence.

### CREW Atlanta

**Ellen W. Smith**  
2022 Chapter President  
3316-A South Cobb Drive, #223  
Smyrna, GA 30080 USA  
(770) 560-3329  
chapterdirector@crewatlanta.org  
[www.crewatlanta.org](http://www.crewatlanta.org)

CREW Atlanta is the leading organization for senior-level executive women in the Atlanta commercial real estate field.

### CREW Austin

**Elise K. Giles**  
2022 Chapter President  
PO Box 91028  
Austin, TX 78709 USA  
(512) 653-9378  
admin@crewaustin.com  
<https://crewaustin.org>

CREW Austin is the leading organization for senior-level executive women and men in the Central Texas real estate community.

### CREW Boston

**Kerry L. Hawkins**  
2022 Chapter President  
101 Federal Street, Suite 1900  
Boston, MA 02110 USA  
(617) 247-2346  
laura@crewboston.org  
[www.crewboston.org](http://www.crewboston.org)

CREW Boston is New England's leading professional organization promoting the advancement of women within the commercial real estate industry. Since 1982, CREW Boston has been an important force behind the increasing success and parity of women in our real estate community.

### CREW Charlotte

**Mary Wilken**  
2022 Chapter President  
PO Box 36692  
Charlotte, NC 28236 USA  
(704) 968-0609  
executive@crewcharlotte.org  
[www.crewcharlotte.org/](http://www.crewcharlotte.org/)

CREW Charlotte was founded in 1990 and consists of a diverse group of professional women and men engaged in commercial real estate and related services industries. There are a wide range of disciplines represented within CREW Charlotte, including but not limited to, real estate brokers, attorneys, bankers and title industry professionals to engineers, developers, and architects.

### CREW Chicago

**Tammy Kelly**  
2022 Chapter President  
1201 Wakarusa Drive, Suite D  
Lawrence, KS 66049 USA  
(785) 832-1808  
info@crewchicago.org  
[www.crewchicago.org](http://www.crewchicago.org)

CREW Chicago's mission is to positively impact the commercial real estate industry by advancing the power and success of women. With more than 300 members, CREW Chicago is the preeminent organization for senior-level executive women in the Chicago real estate field.

### CREW Coastal Virginia

**Bonnie Jean Stretz**  
2022 Chapter President  
PO Box 62815  
Virginia Beach, VA 23466 USA  
(757) 640-7186  
info@crewhamptonroads.org  
<https://crewcoastalvirginia.org>

With approximately 100 members, CREW Coastal Virginia is the leading organization for senior-level executive women in the Southeastern Virginia commercial real estate field.

### CREW Dallas

**Cally Marie Miltenberger**  
2022 Chapter President  
4475 Trinity Mills Road  
PO Box 702492  
Dallas, TX 75287 USA  
(214) 890-6490  
djungerman@crew-dallas.org  
[www.crew-dallas.org](http://www.crew-dallas.org)

CREW Dallas is a powerful network that creates success for women in commercial real estate.

### CREW DC

**Stephanie Duncan**  
2022 Chapter President  
1201 Wakarusa Drive, Suite D  
Lawrence, KS 66049 USA  
(785) 832-1808  
admin@crewdc.org  
[www.crewdc.org](http://www.crewdc.org)

With more than 500 members, CREW DC is the leading organization for senior-level executive women in the Washington D.C. commercial real estate field.

### CREW Denver

**Natalie Ann Sanko**  
2022 Chapter President  
1201 Wakarusa Drive, Suite D  
Lawrence, KS 66049 USA  
(785) 832-1808  
CREWDen@CREWDenver.org  
<https://crewdenver.org>

CREW Denver was founded in 1984 – and has been blazing trails ever since. Today, our membership comprises some of the most influential, enterprising and energetic professionals in Denver. Women willing to step up, take risks and take the lead.

### CREW Detroit

**Lisa Robach**  
2022 Chapter President  
1201 Wakarusa Drive, Suite D  
Lawrence, KS 66049 USA  
(785) 832-1808  
[www.crewdetroit.org](http://www.crewdetroit.org)

With more than 150 members, CREW Detroit is comprised of some of the most influential, enterprising and passionate professionals in Detroit.

### CREW Houston

**Geri Pacheco**  
2022 Chapter President  
PO Box 59  
Bellaire, TX 77042 USA  
(713) 375-2731  
crewhouston@amchouston.com  
[www.crewhouston.org](http://www.crewhouston.org)

Founded in 1998, CREW Houston's mission is to influence the success of the commercial real estate industry by advancing the achievements of women. CREW Houston represents all segments of the commercial real estate industry. Membership includes more than 250 highly motivated members.

### IndyCREW

**Laura Haynes**  
2022 Chapter President  
PO Box 3461  
Carmel, IN 46082 USA  
(317) 708-0483  
indycrew@indycrew.org  
[www.indycrew.org](http://www.indycrew.org)

Our mission is to serve as the catalyst for its members to achieve business success, promote professional development and establish a diverse network within the commercial real estate community.

## CHAPTER LEADERSHIP CIRCLE PARTNERS

---

### CREW Jacksonville

**Julie Hargrove**  
2022 Chapter President  
31 West Adams Street, Suite 102  
Jacksonville, FL 32202 USA  
crewjacksonville@crewnetwork.org  
www.crewjax.org

Since 2002, CREW Jacksonville has connected commercial real estate professionals in the Northeast Florida market area, working together to create a dynamic and supportive environment that promotes advancement through knowledge sharing and networking; push the boundaries in every facet of commercial real estate through provocative dialogue among peers drawn from every discipline in the industry; provide educational programs which directly affect your day-to-day work and promote real change; and, encourage our members to be a force for activism and involvement in our communities.

### CREW Kansas City

**Darcy Schumacher**  
2022 Chapter President  
1800 Genessee Street, Suite 326  
Kansas City, MO 64102 USA  
crewkc@crewkansascity.org  
www.crewkansascity.org

CREW KC is a non-profit organization of commercial real estate professionals **affiliated** globally through membership in the CREW Network, providing opportunities for networking, education, leadership development and civic/philanthropic involvement.

### CREW Lehigh Valley

**Julie Profilet-Saucier**  
2022 Chapter President  
645 Hamilton Street, Suite 800  
Lehigh, PA 18101 USA  
infolv@crewlehighvalley.org  
www.crewlehighvalley.org

CREW Lehigh Valley exists to transform the commercial real estate industry by advancing women. We are dedicated to empowering, promoting and embracing diverse talents, perspectives, and experiences as vital components of our mission.

### CREW New York

**Julia Rocco**  
2022 Chapter President  
1201 Wakarusa Drive, Suite D  
Lawrence, KS 66049 USA  
crewnewyork@crewny.org  
www.crewny.org

Commercial Real Estate Women (CREW) New York is dedicated to the advancement of professional women in commercial real estate through networking, education and leadership development.

### CREW Orange County

**Joanne Lucas**  
2022 Chapter President  
PO Box 128  
Irvine, CA 92650 USA  
(949) 475-7600  
info@creworangecounty.org  
www.creworangecounty.org

CREW Orange County is focused on advancing the success of women in commercial real estate and does so by looking outward to bring more women into the industry, showcasing member expertise and successes and serving as a resource to its members and the industry.

### CREW Orlando

**Laura Barbero-Buffa**  
2022 Chapter President  
37 N. Orange Avenue, Suite 500  
Orlando, FL 32801 USA  
(785) 832-1808  
creworlando@crewnetwork.org  
www.creworlando.org

CREW Orlando exists to influence the success of the commercial real estate industry through advancing the achievements of women in the industry. CREW Orlando encourages this success through the programs it provides, the events it plans and the network opportunities it offers.

### CREW Greater Philadelphia

**Kathleen M. Fahy**  
2022 Chapter President  
1201 Wakarusa Drive, Suite D  
Lawrence, KS 66049 USA  
(785) 832-1808  
crew@crewgreaterphiladelphia.org  
www.crewgreaterphiladelphia.org

With an average of 170 members annually, CREW (Commercial Real Estate Women) Greater Philadelphia is the leading organization for Philadelphia-area commercial real estate professionals of any gender who support the mission of CREW Network.

### CREW San Diego

**Rebecca Bodemann**  
2022 Chapter President  
1201 Wakarusa Drive, Suite D  
Lawrence, KS 66049 USA  
(785) 832-1808  
lindsays@crewnetwork.org  
www.crewsandiego.org

CREW San Diego's mission is to promote, educate and support a network of professionals in the field of commercial real estate.

### CREW San Francisco

**Courtney Davis**  
2022 Chapter President  
1201 Wakarusa Drive, Suite D  
Lawrence, KS 66049 USA  
(785) 832-1808  
crewsf@crewnetwork.org  
www.crewsf.org

Since 1984, CREW SF has been dedicated to changing business' gender trends and closing the parity gap by giving women in real estate the support, resources and opportunities they need to connect, influence and lead.

### CREW Seattle

**Kim Addy**  
2022 Chapter President  
12131 113th Avenue NE, Suite 101  
Kirkland, WA 98034 USA  
(785) 832-1808  
crewseattle@crewnetwork.org  
www.crewseattle.org

Since 1986, CREW Seattle has connected commercial real estate professionals in the Seattle area, working together to promote and advance business, networking and leadership for the success of women in commercial real estate.

### CREW-St. Louis

**Stacey Kamps**  
2022 Chapter President  
1201 Wakarusa Drive, Suite D  
Lawrence, KS 66049 USA  
(785) 832-1808  
crewstl@crewnetwork.org  
www.crewstl.org

Founded in 1982 by a group of female brokers, CREW-St. Louis now stands at over 200 members. CREW-St. Louis' mission is to advance, educate and support women to influence the commercial real estate industry.

### CREW Tucson

**Shaima Namazifard**  
2022 Chapter President  
2445 N Tucson Blvd  
Tucson, AZ 85716  
(520) 382-8791  
admin@crewтусcon.org  
www.crewtucson.org

With more than 70 members, CREW Tucson is one of the leading organizations for entry-level associates and senior-level executive women in the Tucson real estate field.

**Find your CREW,**  
find your business  
advantage



CREW Network | 1201 Wakarusa Drive, Suite D | Lawrence, KS 66049 USA

---

(785) 832-1808 | [crewnetwork.org](http://crewnetwork.org) | [crewnetwork@crewnetwork.org](mailto:crewnetwork@crewnetwork.org)