



**CREW**  
NETWORK 

---

FOUNDATION

**2023**

ANNUAL REPORT

# Table of Contents

- 2023 Leadership..... 3
- Letter from the Chairs ..... 4
- Building a Foundation for the Future ..... 5
- By the Numbers .....7
- Dream Big: 25th Anniversary Campaign .....8
- 2023 Chapter Champions.....9
- Scholarship Program Impacts Lives.....10
- 2023 CREW Network Foundation Scholars .. 11
- Mentorship Program .....17
- Linda Hollemon Scholarship Endowment.....18
- Hall of Fame .....19
- CREW Visionaries Program ..... 20
- Annual Fundraiser ..... 22
- Organization Donors..... 24
- Individual Donors..... 25

The only  
Foundation dedicated  
solely to advancing women  
in commercial real estate.

*Pictured on the cover: Several of the 2023 CREW Network  
Foundation scholarship recipients at the  
convention in Atlanta, Georgia.*

# 2023 Leadership

## EXECUTIVE COMMITTEE



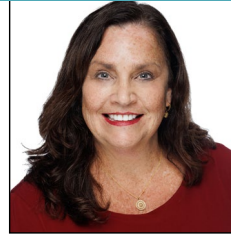
**CHAIR**  
**Gillian Lawrence**  
 CREW Calgary  
 Remington Development  
 Corporation



**INTERIM and IMMEDIATE  
 PAST CHAIR**  
**Claire Roberts**  
 MNCREW  
 Colliers



**CREW NETWORK  
 PAST PRESIDENT**  
**Barbi Reuter**  
 CREW Tucson  
 Cushman & Wakefield |  
 PICOR



**PRESIDENT**  
**Wendy Mann**  
 CEO  
 CREW Network

## CREW NETWORK STAFF



**VICE PRESIDENT**  
**Laura Lewis**  
 Chief Communications  
 Officer, CREW Network



**Nichole Vanner**  
 Foundation Program  
 Manager, CREW Network

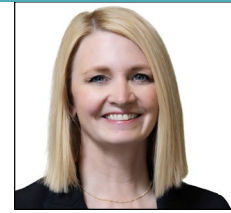
## CHAPTER CHAMPIONS



**Laura Barbero-Buffa**  
 CREW Orlando  
 BASE Consultants, Inc.



**Kelli Dickerson**  
 CREW DC  
 BentallGreenOak



**Stacey Kamps**  
 CREW-St. Louis  
 Keeley Companies



**Melissa Kroskie**  
 CREW Seattle  
 Microsoft



**Jennifer Mazawey**  
 CREW NJ  
 Genova Burns LLC



**Allison Robin**  
 CREW New York  
 Envioe Projects LLC



**Heather Skinner**  
 AZCREW  
 McKesson Corp.



**Yesenia Marili Smith**  
 CREW San Antonio  
 Transwestern



**Michele Stevens**  
 CREW Iowa

## CHAIR EMERITUS

**Elizabeth E. Solender**, CREW Dallas

## HONORARY TRUSTEES

**M. Maureen Anders**, AZCREW

**Dottie Cunningham**, CREW New York

**Bonnie S. Gottlieb**, CREW DC

**Irene L. Hosford**, CREW Dallas

**Anne DeVoe Lawler**, CREW Seattle

**Diana L. Parker**, CREW Miami

# Letter from the Chairs

It was a special year for CREW Network Foundation—our 25th anniversary year—and our most impactful yet. We are grateful for the leaders who had the foresight and passion for women in the industry to start this Foundation in 1998 so that we could support important initiatives to advance women in commercial real estate, develop a pipeline of talent, and benchmark the status of women in the industry.

## From Gillian:

As chair, along with the Executive Committee, we set some lofty goals for this milestone year. We were able to achieve every single one of those goals—but not without some heartache and setbacks along the way.

In February, I suffered a brain bleed and was fighting for my life. I am deeply grateful to be surrounded by love and support of my family, friends, and especially my CREW sisters. The continual flow of cards, flowers and gifts lighted my way forward just as your contributions lead the way forward for the next generation of women leaders in our industry. I am doing well now and continue to focus on my recovery.

My deepest appreciation to Claire Roberts, 2022 Chair, who graciously stepped into the role of Interim Chair, leading our Champion Directors and Chapter Champions to a record-breaking year in raising funds and expanding the Foundation's reach.

## From Claire:

It was my honor to continue the path that Gillian's leadership set forth at the start of our year. She became our inspiration to achieve—and exceed—our goals in 2023. She is one of the reasons why we support the Foundation—it's about the women we are supporting.

It is with gratitude and honor on behalf of our board, executive committee, and volunteer leaders that we share with you our 2023 achievements. In a bittersweet year, generous donors came together to move our mission forward, support women in commercial real estate, and achieve unprecedented success. In 2023, CREW Network Foundation:

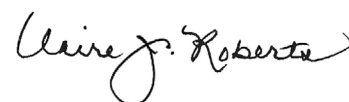
- Awarded \$150,000 in scholarships to university women pursuing careers in commercial real estate.
- Subsidized registration costs for 59 students and 25 scholars to attend the 2023 CREW Network Convention in Atlanta—the most ever
- Raised more than \$190,000 through two campaigns—Dream Big, Be Bold and Member May
- Held our most successful annual fundraising event to date, achieving a record high for tickets sold, underwriter support, and total raised (\$195,400!)
- Inducted 13 new CREW Visionaries and added diamonds to 12 Visionary pins—25 Visionary achievements in our 25th anniversary year
- Received gifts from a total of 6,674 donors—the most in a single year

In the following pages of this report, you will find a recap of our 2023 achievements and impact, our inspiring scholars, and recognition of our generous supporters and volunteers.

I would like to express my gratitude to our membership, CREW Network staff, board of directors, chapter leaders, and industry partners for their dedication and support. Together, we are accelerating the success of all women in commercial real estate globally.



**Gillian Lawrence**  
2023 CREW Network Foundation Chair



**Claire Roberts**  
2023 CREW Network Foundation Interim Chair



**Gillian Lawrence**

Remington Development Company  
CREW Calgary



**Claire Roberts**

Colliers  
MNCREW

# Building a Foundation for the Future

CREW Network Foundation is the charitable arm of CREW (Commercial Real Estate Women) Network and the only organization dedicating its resources solely towards transforming the commercial real estate industry by advancing women globally.

## Who We Serve

In a predominately male industry that is impacted by gender bias, CREW Network Foundation provides girls and women with education, support, and advocacy. We are growing the pipeline of women into commercial real estate with programs that educate women and girls about the career opportunities available to them, as well as providing resources to students pursuing CRE careers.

We bring women in commercial real estate together to share ideas and resources, invest in businesses, work to find solutions to common challenges and share opportunities for growth. We also encourage gender equity and diversity and educate commercial real estate companies about the benefits of having greater diversity throughout its talent pipeline, employees, board and leadership.

## What We Do

### EDUCATE

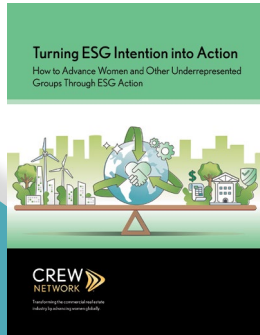
The CREW Network Foundation Scholarship program supports female students as they pursue university-level education that will lead to careers in commercial real estate. In 2023, CREW Network Foundation granted a total of 30 \$5,000 scholarships to undergraduate university students across the U.S. and Canada.

Scholarships are available to female (or those who identify as female) junior and senior undergraduate students, and enrolled full time in graduate programs to cover the cost of tuition and books. Applicants must have a minimum GPA of 3.0 on a 4.0 scale and must be a citizen of the U.S. or Canada to be eligible. Their major must be included in one or more of the CREW Network Qualified Fields of Commercial Real Estate (QFCRE) shown on the right.

The number of scholarships awarded each year to female students attending college full time is based upon the availability of interest income from the endowment, contributions and matching corporate funds. Scholarship Endowment funds are permanently restricted and only investment earnings from those contributions can be used for funding current scholarships. Annual Current Scholarship funds are temporarily restricted for the purpose of funding current scholarships.

- Accounting
- Acquisitions/Dispositions
- Appraisal
- Architecture
- Asset Management
- Brokerage
- CRE Business Development
- Commercial Insurance
- Commercial Lending
- Construction Management/  
General Contracting
- Consulting
- Corporate Real Estate
- Cost Segregation
- Economic Development
- Education
- Engineering
- Environmental
- Environmental, Social and  
Governance (ESG)
- CRE Executive
- Facility Management
- Finance
- CRE Human Resources
- Interior Design/Space Planning
- Investment Management
- Investor Relations
- Land Use Planning and Zoning
- Land Surveying
- Law
- Market Research
- Program Management/  
Project Management
- Property Management
- Public Sector
- Quasi-Governmental Transportation  
and Port Authorities
- Real Estate Development
- Relocation Services, Corporate
- Risk Management
- Title/Escrow





In 2023, more than  
**1,200 girls**  
 participated in a CREW Careers program.



*Participants of CREW Charlotte's CREW Careers event*

In 2023, UCREW reached  
**over 800**  
 college students.



*Participants of CREW Atlanta's UCREW event*

## RESEARCH

Foundation contributions make it possible for CREW Network to remain the leading publisher of research on gender and diversity, equity, and inclusion in commercial real estate—research that is helping close the gender gap in the industry and marking progress through benchmark studies and annual research papers. This research directly supports CREW Network’s strategic initiatives and educational programming. In 2023, CREW Network Foundation provided funding for the CREW Network industry research paper *Turning ESG Intention into Action, a Guide to Advance Women and Other Underrepresented Groups in Commercial Real Estate Through Environmental, Social, and Governance Action*.

## OUTREACH

Commercial real estate offers rewarding and lucrative careers that are often overlooked because women are unaware of the opportunities that exist. CREW Network Foundation supports programs that educate women and girls about the career opportunities available to them, including:

- **CREW Careers** is a hands-on program, designed to introduce middle and high school girls to the many career opportunities available to them within the commercial real estate industry.
- **UCREW** introduces college students to opportunities within the commercial real estate industry. Members of CREW Network chapters serve as role models to teach students networking fundamentals, offer powerful career resources, and provide relationship building career development opportunities.
- **The CREW Network Mentoring Modules** provides a rich tapestry of principles organized in an easy-to-understand format. The success stories of our members often include descriptions of wise mentors, both male and female, who have made efforts to help grow careers through unofficial mentoring relationships. No group is better suited to mentor women in commercial real estate than CREW Network.

## GREATEST NEEDS FUND

Contributions to the Greatest Needs Fund are first used to cover the basic administrative costs of operations. Remaining funds are evaluated annually by the executive management committee and are often used to provide additional funding to scholarships, industry research, or career outreach are set aside as reserves to cover potential future needs.

# By the Numbers

## Giving Overview

More than **\$902,574** (USD) raised for the Foundation

**6,674** individual donors, an increase of nearly **25%** from 2022

**13** CREW Visionary inductees

**12** Visionaries added diamonds to their pins

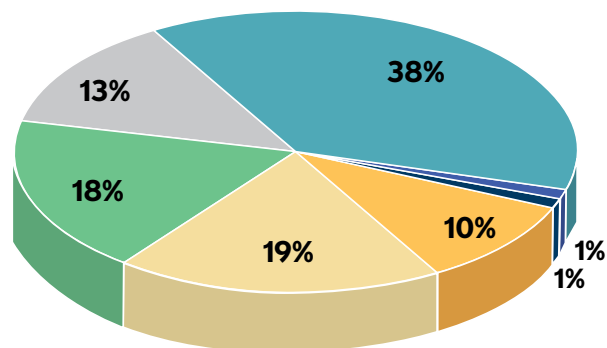
## Chapter Giving

- **91%** of our chapters contributed a total of **\$220,929**
- Chapters contributed **\$90,000** to the Foundation Hall of Fame
- **66** of **79** chapters achieved the Chapter Challenge “Trifectas”
- **77** chapter boards fully supported the foundation
- **66** chapters had **50%** of their membership make an individual donation

## Fundraising Annual Event

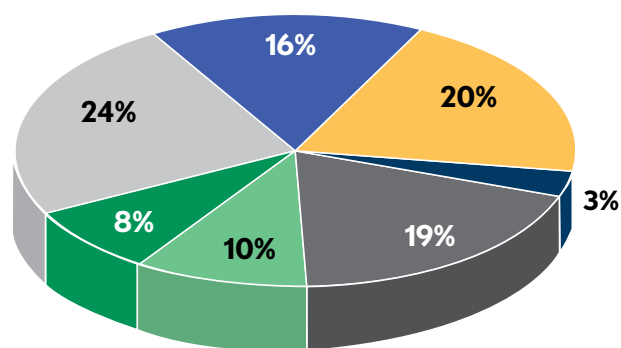
Held at the historic Fox Theatre in Atlanta, raised a record **\$195,400**

### Total Revenues = \$1,038,114<sup>1</sup>



Unrestricted Contributions	\$ 399,225	38%
Career Outreach Contributions	5,735	1%
Industry Research Contributions	8,605	1%
Scholarship Endowment Contributions	103,035	10%
Annual Scholarship Contributions <sup>2</sup>	193,674	19%
Fundraising Events	192,300	18%
Investment/Misc. Income*	135,540	13%
<b>Total</b>	<b>\$1,038,114</b>	<b>100%</b>

### Total Expenses = \$701,421<sup>1</sup>



Career Outreach	\$ 114,368	16%
Scholarship Awards	142,500	20%
Research Grants	20,000	3%
Other Program Expenses <sup>2</sup>	134,478	19%
Fundraising Events	69,096	10%
Other Fundraising Events	53,246	8%
Management/General Administrative	167,733	24%
<b>Total</b>	<b>\$701,421</b>	<b>100%</b>

\*does not include \$174,493 of unrealized gains on investments

<sup>1</sup> Some chapters use CREW Network Foundation as a conduit for their local fundraising efforts. Revenues and Expenses from these events were \$413,563 and \$256,279, respectively, and are not included in the charts presented above.

<sup>2</sup> Amounts for the Annual Scholarship Fund include donations of \$32,548 to CREW Network Foundation Canada, and related administrative expenses of \$2,913.

# Dream Big

CREW Network Foundation celebrated its 25th anniversary in 2023 with a banner year of giving. Two successful, unprecedented fundraising campaigns boosted individual giving opportunities and encouraged CREW members to dream big, be bold, and support the next generation of leaders in our industry.

In January, CREW Network Foundation launched the 25th Anniversary Dream Big, Be Bold campaign, which surpassed its goal of \$125,000 and raised \$155,476. In May, the Member May campaign raised an additional \$41,222 and was a catalyst for many CREW chapters to achieve the Chapter Challenge “Trifecta.” In all, member-driven campaigns raised over \$190,000 in 2023 with more than 1,000 donors participating.



## Chapters Rise to the Challenge

The Chapter Challenge increases awareness of the Foundation’s powerful reach and raises funds for scholarships, industry research and career outreach. The three components of the Chapter Challenge are gifts from 50% of a CREW Network chapter’s membership, 100% of the chapter board, and a chapter donation of at least \$1,000 USD. At the end of the giving year, 66 chapters achieved the Foundation Chapter Challenge. Kudos to these chapters!

- |                              |                           |                          |                                |                           |                                   |
|------------------------------|---------------------------|--------------------------|--------------------------------|---------------------------|-----------------------------------|
| CREW<br>GREATER AKRON        | AZCREW                    | CREW<br>ATLANTA          | CREW<br>AUSTIN                 | CREW<br>BALTIMORE         | BIRMINGHAM<br>CREW                |
| CREW<br>CALGARY              | CAPE FEAR<br>CREW         | CREW<br>CHARLESTON       | CREW<br>CHARLOTTE              | CREW<br>CHICAGO           | CREW<br>DC                        |
| CREW<br>GREATER CINCINNATI   | CREW<br>CLEVELAND         | CREW<br>COASTAL VIRGINIA | CREWCT                         | CREW<br>DALLAS            | CREW<br>DENVER                    |
| CREW<br>DETROIT              | CREW<br>EAST BAY          | EDMONTON<br>CREW         | CREW<br>FORT WORTH             | CREW<br>HOUSTON           | INDY<br>CREW                      |
| CREW<br>IOWA                 | CREW<br>INLAND EMPIRE     | CREW<br>JAX              | CREW<br>KANSAS CITY            | CREW<br>LAS VEGAS         | CREW<br>LEHIGH VALLEY             |
| CREW<br>LOS ANGELES          | CREW<br>MARYLAND SUBURBAN | CREW<br>MIAMI            | MNCREW                         | CREW<br>NAPLES FORT MYERS | CREW<br>NASHVILLE                 |
| CREW NJ                      | CREW<br>NEW MEXICO        | NEW ORLEANS<br>CREW      | CREW<br>NEW YORK               | CREW<br>NORTHERN COLORADO | CREW<br>NORTHERN NEVADA           |
| CREW<br>NORTHERN VIRGINIA    | CREW-OKC                  | CREW<br>OMAHA            | CREW<br>ORANGE COUNTY          | CREW<br>ORLANDO           | CREW<br>PALM BEACH TREASURE COAST |
| CREW<br>GREATER PHILADELPHIA | CREW<br>PITTSBURGH        | PTCREW                   | CREW<br>RICHMOND               | CREW<br>SACRAMENTO        | CREW<br>SAN ANTONIO               |
| CREW SF                      | CREW<br>SAN DIEGO         | CREW<br>SEATTLE          | CREW<br>SILICON VALLEY         | CREW<br>ST. LOUIS         | CREW<br>TAMPA BAY                 |
| TRIANGLE<br>CREW             | CREW<br>TUCSON            | CREW<br>VANCOUVER        | CREW<br>UPSTATE SOUTH CAROLINA | CREW<br>WEST MICHIGAN     | WISCONSIN<br>CREW                 |



# 2023 Chapter Champions

These dedicated leaders promote CREW Network Foundation fundraising efforts by inspiring chapter members and board leadership to support the foundation through individual donations and special chapter events.

**Josephine Aberle**  
CREW CT

**Susan Ahlheit**  
CREW Nashville

**Nicole Allard**  
Wisconsin CREW

**Shirley Anderson**  
CREW New Mexico

**Denise Armstrong**  
CREW Greater Akron

**Megan Atwell**  
CREW Nova Scotia

**Natalie Barnes**  
New Orleans CREW

**Carla Barney**  
CREW Calgary

**Dawn Beck**  
CREW New Mexico

**Kristin Blackman**  
CREW Iowa

**Rosemary Bright**  
CREW Tucson

**Whitney Brignolo**  
CREW Greater Cincinnati

**Lindsey Brist**  
AZCREW

**Heather Brown**  
CREW Atlanta

**Katie Burden**  
CREW DC

**Alyssa Byrd**  
Triangle CREW

**Tammy Carrion**  
CREW Orlando

**Lori Coleman**  
CREW San Francisco

**Dana Compton**  
CREW Fort Worth

**Josie Correa**  
CREW Miami

**Dianne Crocker**  
CREW Boston

**Romona Davis**  
CREW Cleveland

**Raedun De Alba**  
CREW Northern Virginia

**Jennifer Dorgan**  
CREW Inland Empire

**Julie Dube**  
CREW Montreal

**Julia Evinger**  
IndyCREW

**Brenda Ezell**  
CREW Jacksonville

**Lauren Flatley**  
CREW Charleston, Inc.

**Marcy Fleming**  
CREW Hawaii

**Farrah Forbes**  
CREW New York

**Larisa Forester**  
CREW Los Angeles

**Jillian Fredericks**  
CREW Houston

**Kari Golden**  
CREW-Las Vegas

**Lauren Greene**  
CREW Midlands South Carolina

**Lee Ann Gudorp**  
CREW Richmond

**Abigail Hampton**  
CREW Columbus

**Genevieve Hanson**  
CREW DC

**Stephanie Hill**  
BirminghamCREW

**Kevin Hunt**  
CREW Ft. Lauderdale/Boca Raton

**Jawanda Jackson**  
CREW Greater Philadelphia

**Marty Janowiak**  
CREW West Michigan

**Alex Johnstone**  
CREW San Diego

**Tanya Jones**  
CREW Upstate South Carolina

**Samantha Jordan**  
CREW Portland

**Brenda Karp**  
CREW Coastal Virginia

**Kristin Killgore**  
CREW-OKC

**Angie Kim**  
CREW Seattle

**Yolanda King**  
CREW Atlanta

**Hilary Klein**  
CREW Northern Colorado

**Eloise Klein**  
CREW Baltimore

**Marlene Knight**  
CREW Omaha

**Susan Korath**  
CREW NJ

**Georgia Kouros**  
CREW Orange County

**Melissa Kroskie**  
CREW Seattle

**Lesle Lane**  
IndyCREW

**Kristina Lekas**  
CREW San Diego

**Trisha Litzau**  
CREW-Las Vegas

**Virginia Luther**  
CREW Charlotte

**Kimberly Maber**  
CREW Saskatoon

**Sarah Mancuso**  
CREW Silicon Valley

**Ana Martins**  
CREW Lehigh Valley

**Danielle McCormac**  
CREW Coastal Virginia

**Kassandra McLaughlin**  
CREW Dallas

**Julie Miller**  
CREW Maryland Suburban

**Linda Miller**  
CREW Silicon Valley

**Lindsey Mingee**  
CREW Inland Empire

**Ilona Mitchell**  
CREW Idaho

**Barbara Monahan**  
CREW Naples/Fort Myers

**Amanda Norris**  
CREW-St. Louis

**Debbie Ogrodnik**  
CREW Pittsburgh

**Susan Passmore**  
PT CREW North Carolina

**Linda Plesic**  
CREW Greater Philadelphia

**Misty Ponce**  
CREW-LA

**Annette Popiel-Hammerle**  
CREW Detroit

**Abigail Reichling**  
Wisconsin CREW

**Laraine Saldivar**  
CREW Denver

**Christie Sbarra**  
CREW Denver

**Jennifer Scher**  
CREW Tampa Bay

**Sherry Schmidt**  
CREW Palm Beach/Treasure Coast, Inc.

**Darcey Schumacher**  
CREW Kansas City

**Alex Schwerdt**  
CREW Utah

**Victoria Serr**  
East Bay CREW

**Dee Singletary**  
CREW Northern Virginia

**Krysta Stauch**  
CREW Austin

**Mythili Thiagarajan**  
MNCREW

**Jasmean Toor**  
CREW Vancouver

**Kimberly Train**  
Toronto CREW

**Dawn Vernon**  
CREW San Antonio

**Krista Wahnefried**  
CREW Northern Nevada

**Kalli Waltner**  
CREW Sacramento

**Laura Way-Olenek**  
Edmonton CREW

**Karen Widmayer**  
Cape Fear CREW

**Melissa Wilhelm**  
CREW Greater Cincinnati

**Olivia Wirth**  
CREW Chicago

**Carrie Woerdeman**  
CREW Iowa

# Scholarship Program Impacts Lives

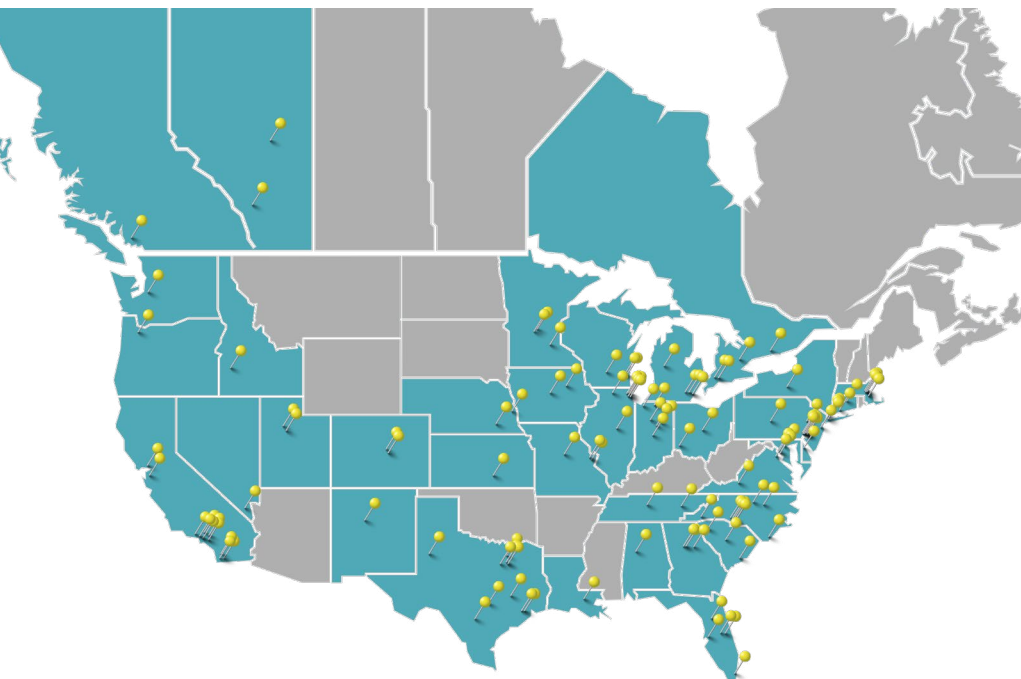


Since 2009, CREW Network and CREW Network Foundation have awarded scholarships to 256 women totaling \$1,447,500. The CREW Network Foundation Scholarship program is supported by a permanent endowment, as well as contributions to the current annual scholarship fund. The scholarship, which is designed to encourage women to pursue an education that will lead to a career in the commercial real estate industry, is awarded on the basis of academic excellence.

In 2023, CREW Network Foundation granted 30 scholars \$5,000 USD each for tuition and books; a 24-month CREW Network membership; complimentary registration to the 2023 CREW Network Convention; a \$1,000 travel stipend to attend the convention; and a six-month mentoring opportunity with a CREW Visionary.



2023 CREW Network Foundation scholars at the Convention in Atlanta, Georgia.



Over the past 14 years,  
CREW Network  
Foundation has provided:

**\$1,447,500** USD

awarded to **256** women in

**38** states/provinces and

**123** universities

# 2023 CREW Network Foundation Scholars



## Jacqueline Abnos

**Hometown:**  
Kansas City, Missouri

**University and focus of study:**  
Undergraduate  
George Washington University  
Business/Finance with concentration in Real Estate

Abnos is a rising senior double majoring in Business and Finance with a concentration in Real Estate and a minor in Organizational Science. She is a mentor in the Real Estate and Finance Alliance and served as President of the Commercial Real Estate Network, a student organization for students interested in Real Estate at George Washington University. Abnos currently holds a Real Estate Salesperson license in the state of Missouri. She worked as a Construction Services Intern with Greystar and spent the last semester interning with the National Multifamily Housing Council as well as the Center for Real Estate and Urban Analysis. She is currently interning as a HUD underwriting intern at Walker and Dunlop. Abnos aspires to work within real estate development.



## Sarah Auer

**Hometown:**  
Aubrey, Texas

**University and focus of study:**  
Undergraduate  
Texas Tech University  
Finance

Auer is a junior majoring in finance with a certificate in commercial real estate and minoring in psychology. She serves as Vice President of the TTU Real Estate Organization, New Member Educator for her sorority, Zeta Tau Alpha, and a Rawls College of Business Senator for the Student Government Association. Auer has interned for two summers in the DFW Metroplex at TIG Real Estate Services and aspires to work in commercial real estate brokerage upon graduation.



## Kayla Baldwin

**Hometown:**  
Chicago, Illinois

**University and focus of study:**  
Graduate  
University of Illinois at Urbana-Champaign  
Urban Planning

Baldwin completed her undergraduate degree in Urban Studies and Planning in three years and is currently enrolled in a program allowing her to complete her Master of Planning in an additional year. She recently interned with Power Construction as a Community Development Intern. Baldwin looks forward to exploring opportunities that combine her degree in Urban Planning with her interest in commercial real estate and development.



## Francesca Bennett

**Hometown:**  
Manhattan Beach, California

**University and focus of study:**  
Undergraduate  
University of Southern California  
Real Estate Development

Bennett is a senior at USC obtaining a degree in Real Estate Development with a minor in Finance. She is a CREW LA intern and Executive Board Director for the Trojan Real Estate Association. She recently interned with Rialto Capital as a Summer Analyst, as well as had other real estate focused internships in Affordable Development and Asset Management. Bennett is also an Ambassador for USC's School of Public Policy to introduce incoming students to the Real Estate Development program. She looks forward to exploring opportunities that combine her interests of Commercial Real Estate and Finance.



## Isabella Bernard

**Hometown:**  
East Greenwich, Rhode Island

**University and focus of study:**  
Undergraduate  
The Catholic University of America, Washington, D.C.  
Architecture and Civil Engineering

Bernard is obtaining a five-year dual degree in Architecture and Civil Engineering with a minor in Sustainability. She is currently interning with Travis Price Architects and has worked from the start of her undergraduate degree at architecture and construction firms, alongside her coursework and university research. Bernard has also served as President of her university's Society of Women Engineers chapter and Secretary of the American Institute of Architecture Students. She looks forward to exploring opportunities within the field of commercial real estate that focus on sustainability while combining the innovative fields of design and build.



### **Natalie Bongirno**

**Hometown:**  
Naples, Florida  
**University and focus of study:**  
Undergraduate  
University of Florida  
Business Administration and Real Estate Development

Bongirno is a senior studying business with a specialization in Urban and Regional Planning. She is also a combined Master of Science Real Estate Candidate and will earn her MSRE in May 2025. Throughout her studies, she has completed internships with eXp Realty and LandQwest Commercial Real Estate Services. Bongirno is an active member of UF's Real Estate Society and Women in Real Estate Society and plans to become a multifamily and residential community developer.



### **Annmarie Bonanno**

**Hometown:**  
Philadelphia, Pennsylvania  
**University and focus of study:**  
Graduate  
Widener University  
Delaware Law School  
Law

Bonanno has worked in the industry as a Licensed Title Agent, Real Estate Salesperson, and Paralegal, with experience in both residential and commercial transactions. She has now returned to school to pursue her J.D., while maintaining her job as a Senior Commercial Real Estate Paralegal. She is a member of the newly founded Real Estate Student Association at the law school, and hopes to practice commercial real estate law in Pennsylvania and Delaware.



### **Christina Chan**

**Hometown:**  
Houston, Texas  
**University and focus of study:**  
Undergraduate  
University of Southern California  
Assets Management

Chan is a senior pursuing a major in business administration and a minor in real estate development. At USC, she is currently the co-president of the Trojan Real Estate Association and a Marshall School of Business student ambassador. Chan has previously worked as a real estate agent in the Greater Houston area, along with having interned at Hines and Blackstone. Upon graduation, she aims to pursue a career in commercial real estate particularly in the hospitality and housing space and aspires to teach real estate to college students.



### **Liz Dillard**

**Hometown:**  
Spartanburg, South Carolina  
**University and focus of study:**  
Undergraduate  
Clemson University  
Finance

Dillard is obtaining a degree in Financial Management with a minor in Accounting. She is the CREW liaison for the Real Estate Club and a founding member of Clemson's FMA (Financial Management Association) chapter. She recently interned with Truist Securities as a Credit Delivery Summer Analyst. Dillard looks forward to exploring opportunities that combine her degree in finance with her interests in commercial real estate.



### **Grace Donaldson**

**Hometown:**  
Toledo, Ohio  
**University and focus of study:**  
Undergraduate  
The Ohio State University  
Finance and Real Estate

Donaldson is a Scholars student, obtaining a dual degree in Finance and Real Estate with a minor in Leadership Studies. She is President of the Fisher Real Estate Society and the founder of OSU's Women in Real Estate (WIRE) club, which will become active during the 2023-24 school year. Donaldson is currently interning with JLL's Capital Markets team in Chicago for the summer of 2023. Her past internship experience has been at Colliers in Columbus and Signature Associates Commercial Real Estate in Toledo. She looks forward to pursuing opportunities within the commercial real estate sales industry.

**“Receiving the Foundation scholarship has truly changed my life. I entered college undecided on a career path, with no connections to the world of commercial real estate.**

**I left college with a solid understanding of the different sectors of CRE, a clearer picture of my career goals; and most importantly, a family of 14,000 women who tirelessly support and uplift me as I navigate what comes next.”**

— Liz (Dillard) Hammond | Clemson University



### **Madeline Elson**

**Hometown:**  
Indianapolis, Indiana  
**University and focus of study:**  
Undergraduate  
Indiana University  
Finance and Real Estate

Madeline is a junior studying Finance and Real Estate. At Indiana University, Madeline’s involvement in IU’s real estate program began with the Real Estate Club. This summer, she has been working as a Development Intern for the Southeast Residential Development Team at Thompson Thrift. In the future, she aspires to create a positive impact in her community through a career in real estate.



### **Julia Heilman**

**Hometown:**  
Waterford, Michigan  
**University and focus of study:**  
Undergraduate  
University of Michigan  
Business

Heilman is entering her junior year and will be obtaining a degree in Business with a minor in Real Estate Development and Sustainability. She is the Vice President of Internal Relations for the Michigan Private Equity Venture Capital Club, a member of Michigan’s Real Estate Club, and a brother of Phi Gamma Nu Business Fraternity. Heilman recently interned with Bloomfield Capital as a Real Estate Private Equity Summer Analyst. She looks forward to exploring opportunities that combine her interest in finance with her interest in sustainable real estate development.



### **Joy Herrera**

**Hometown:**  
The Bronx, New York  
**University and focus of study:**  
Undergraduate  
Lafayette College  
Civil Engineering/  
International Studies

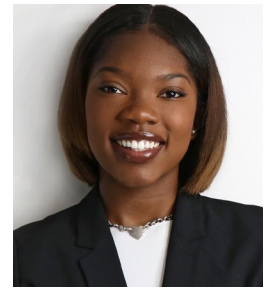
Herrera is entering her senior year, pursuing a BS/BA dual degree in Civil Engineering and International Studies. She is the Professional Development and Corporate Chair of her college’s Society of Hispanic Professional Engineers and has spent the past two summers as a land development intern and a land survey intern. She looks forward to further exploring the fields of land surveying and civil engineering and their potential intersections.



### **Anneke Hoskins**

**Hometown:**  
Cincinnati, Ohio  
**University and focus of study:**  
Graduate  
University of Cincinnati  
Architecture

Hoskins is entering her second and final year of her Master of Architecture degree. Her focus of academic study is historic preservation and how the restoration of aging buildings can affect the development of both real estate and communities nearby. Professionally, she has worked on many exciting projects such as an addition to a 150-year-old church, hospitals, education facilities, and renovations at Smithsonian museums. She looks forward to delving further into the field as she moves on to the next steps in her career after graduation.



### **Yentell James**

**Hometown:**  
Waldorf, Maryland  
**University and focus of study:**  
Undergraduate  
North Carolina  
A&T State University  
Double Major Business  
Management and  
Marketing

James is obtaining degrees in Business Management and Marketing. She co-founded the Aggie Real Estate Society and is an intern at the North Carolina A&T Real Estate Foundation on her campus. James recently interned with Kearney as a Business Analyst. She looks forward to exploring opportunities that combine her degrees in management and marketing with her interests in commercial real estate. Long term, she plans on pursuing a career in Real Estate Consulting.

**“I am very grateful for the CREW Foundation scholarship which not only provided me financial aid in my graduate studies but also opened up an extensive network of successful women in the real estate industry. I am grateful to be a part of CREW which gave me the opportunity for a CREW New York chapter mentorship; the CREW Foundation mentorship, and the CREW conventions, where I have been able to learn and gain insight from my mentors. Thank you CREW for the substantial support and opportunities!”**

– Jessie Pan | Columbia University



### **Abrielle Jensen**

**Hometown:**  
Portland, Oregon

**University and focus of study:**  
Undergraduate

Brigham Young University  
Finance

Jensen is currently in her final undergraduate year, pursuing a degree in Finance. Throughout her academic journey, she has actively engaged in leadership roles, serving as the Co-President of BYU's Real Estate Association and previously holding a similar position in her university's Women in Finance Association. This summer, she interned with Blackstone's New York office as a Summer Analyst, where she was a part of the Real Estate team. Looking ahead, Jensen is eager to continue pursuing opportunities that synergize her finance expertise with her passion for commercial real estate.



### **Siena Mauvais**

**Hometown:**  
Englewood, Colorado

**University and focus of study:**  
Undergraduate

University of Colorado  
Boulder  
Finance and Real Estate

Mauvais is a fourth-year undergraduate student and proud member of the Leeds Scholars and Honors programs. She is interested in commercial real estate brokerage and development and is currently interning at JLL as an Investment Sales Analyst on the multi-family team. Last summer, she interned at Westside Investment Partners, a CRE development firm in Denver. Mauvais is in the Kappa Alpha Theta sorority and a member of the Real Estate Club.



### **Sarah McDowell**

**Hometown:**  
Kansas City, Missouri

**University and focus of study:**  
Graduate

University of Southern  
California  
Master of Real Estate  
Development

Prior to USC, McDowell had six years of experience as a mechanical engineer designing HVAC. As a licensed engineer, she worked for Arup, an international company, on a variety of high-rise mixed-use, office, and hospitality projects. She transitioned to sustainability and energy consulting for the past two years advising companies, schools, and municipalities on energy saving and decarbonization strategies. She earned a bachelor's degree in physics from Loyola University Chicago and a bachelor's degree in mechanical engineering from Washington University in St. Louis, Missouri.



### **Melinda Montes**

**Hometown:**  
Atlanta, Georgia

**University and focus of study:**  
Undergraduate

Georgia State University  
Real Estate

Melinda is entering her last semester at Georgia State's Honors College and Robinson College of Business, obtaining a business degree in Real Estate. She is the current Director of Operations of The Commercial Real Estate Group at GSU and recently interned with Brookfield Properties as a Logistics Intern. She looks forward to exploring opportunities that combine her experience and interests in commercial real estate as she embarks on a dynamic and fulfilling career in the industry.



### **Sara Olefsky**

**Hometown:**  
Naperville, Illinois

**University and focus of study:**  
Undergraduate

Iowa State University  
Finance

Olefsky's most recent internship experience is in the finance department of a multifamily commercial real estate firm. She has past internship experiences at a fintech company as well as in wealth and investment management operations. She has been President of the Iowa State Finance club, and a Business Learning Team Peer Mentor for incoming freshmen. Additionally, she has spent two academic semesters abroad in Amsterdam and London.



### Jessie Pan

**Hometown:**  
Vancouver,  
British Columbia

**University and  
focus of study:**

Graduate  
Columbia University  
Architecture

Pan is entering her first year at Columbia University's Graduate School of Architecture, Planning, and Preservation, obtaining a Master's degree in Architecture. She has an undergraduate degree in architectural studies from the University of Toronto, where her commitment to sustainable design led her to pursue an Environmental Studies minor and enroll in the Certificate in Sustainability of the Built Environment.

Pan was also a research student at the Design for Climate and Comfort Lab. These experiences provided her with a comprehensive and interdisciplinary framework for her future endeavors in architecture.



### Mariko Pallarito

**Hometown:**  
Littleton, Colorado

**University and  
focus of study:**  
Undergraduate

University of Colorado-  
Boulder  
Finance and Real Estate

Pallarito is a senior currently pursuing a Bachelor of Science degree with dual emphasis in Finance and Real Estate. Outside of her classes, she serves as the Co-Vice President for the CU Real Estate Club, works part-time on campus, and recently completed a semester-long case competition series. This summer, she is interning at Ares Management. She looks forward to exploring opportunities that combine real estate and finance.



### McKenzie Pearson

**Hometown:**  
Wayzata, Minnesota

**University and  
focus of study:**

Graduate  
University of Minnesota  
Environmental  
Engineering

Pearson recently graduated summa cum laude from Valparaiso University with a B.S. in Environmental Engineering and will be starting her first year at the University of Minnesota pursuing a master's this fall. She is currently working as an intern for Geosyntec Consultants and has enjoyed getting experience in brownfield redevelopment projects. She is passionate about environmental remediation and aspires to be a leading professional at the intersection between real estate and environmental consulting.



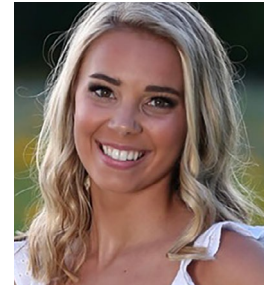
### Madison Psinas

**Hometown:**  
Pekin, Illinois

**University and  
focus of study:**  
Graduate

Judson University  
Architecture

Psinas is an Associate of the American Institute of Architects, an alum of Tau Sigma Delta (Architectural Honors Society) and has experience managing and selling commercial property. She is currently employed at Farnsworth Group Inc., a multi-disciplined national design firm in the United States and is eager to continue learning about the intersections of the architectural profession and commercial real estate.



### Madison Ross

**Hometown:**  
Dallas, North Carolina

**University and  
focus of study:**  
Undergraduate

University of North  
Carolina at Chapel Hill  
Real Estate Development

Ross is entering her senior year, pursuing a degree in Management and Society with a minor in Real Estate through Kenan-Flagler Business School. This summer, she is interning at Medalist Capital, a real estate financial services company that specializes in mortgage banking. Ross is an active member of the UNC Real Estate Club and earned a certificate for Financial Analysis with Real Estate Modeling in 2022. She is interested in how real estate development can impact living conditions in low-income countries.



### **Courtney Scheepers**

**Hometown:**  
Amanzimtoti,  
South Africa

**University and  
focus of study:**

Graduate

George Mason University  
Master's in Real Estate  
Development

Scheepers is a Senior Project Engineer at the engineering firm Gordon and pursuing her master's in real estate development.

She is an active student member in CREW NoVA and part of the CREW NoVA Professional Development Committee. Her background is in Civil Engineering for the land development industry and she is responsible for managing all aspects of project tasks including county site plan approval, permitting, internal and external coordination and construction administration.

Scheepers looks forward to learning more about other areas in commercial real estate and how it can better suit her current role.



### **Emily Shih**

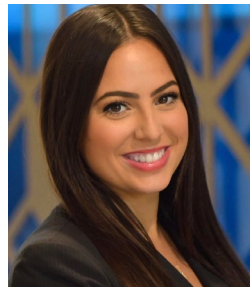
**Hometown:**  
Cary, North Carolina

**University and  
focus of study:**

Undergraduate

University of North  
Carolina at Chapel Hill  
Corporate Real Estate

Shih is a senior at UNC Chapel Hill studying business and economics with a concentration in real estate. She has interned with Berkeley Capital Advisors, Kane Realty Corporation, and is currently a summer analyst at Wells Fargo's CRE in NYC. She loves the fast-paced world of real estate finance and plans to pursue it as a full-time career.



### **Mia Soto**

**Hometown:**  
San Diego, California

**University and  
focus of study:**

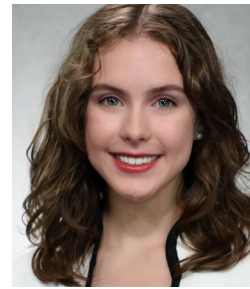
Undergraduate

University of San Diego  
Real Estate Development

Soto is majoring in Real Estate and minoring in Leadership Studies. Born and raised in San Diego, she developed a deep appreciation for the built environment and its impact on communities from an early age. This led her to pursue a career in real estate, where she hopes to make a positive difference in people's lives through thoughtful and sustainable development.

Soto is the President of USD's Real Estate Society and serves on the executive boards of her sorority, Pi Beta Phi, and professional business fraternity, Phi Chi Theta.

She has served as a marketing/social media manager for multiple real estate companies and is currently interning with Hammer and Hampel, a real estate investment group. She hopes to pursue a career in commercial development, construction, or brokerage.



### **Gwyneth Thomas**

**Hometown:**  
Ft. Wright, Kentucky

**University and  
focus of study:**

Undergraduate

University of Cincinnati  
Real Estate and Finance

Thomas is obtaining a dual degree in Real Estate and Finance with a minor in Architectural Studies. She is the incoming President of the University of Cincinnati Real Estate Association, after serving for the last year as Internal Vice President. Other significant campus involvements include Lindner Ambassadors, and membership in Delta Sigma Pi business fraternity. Thomas has interned with real estate firms Fischer Homes, Bellwether Enterprise, and most recently Viking Partners as an acquisitions intern. She looks forward to exploring additional opportunities in real estate that combine her analytical and creative interests.



### **Anna Turco**

**Hometown:**  
Hartland, Wisconsin

**University and  
focus of study:**

Undergraduate

University of  
Wisconsin - Madison  
Architecture

Turco recently graduated with a Bachelor's degree in Interior Architecture from the University of Wisconsin. She has an interest in designing and renovating commercial buildings that bring positive change to surrounding communities and environments. Turco is excited to join the CREW Network of amazing women who will broaden her knowledge in commercial real estate and support one another in growing both academically and professionally.





# Mentorship Program

CREW Network Foundation offers scholarship recipients in their second year of CREW membership a six-month mentoring opportunity with our CREW Visionaries—senior leaders in commercial real estate (see pg. 20 for more information). Students in the mentorship program also receive a complimentary CREW Network Convention registration and a \$1,000 travel stipend to attend. In 2023, the mentoring program grew to 17 pairs.

## MENTEES

DeeVonda Batres  
 Carly De La Hoz  
 Yayi Ding  
 Andrea Johnson  
 Bailey Kim  
 Caitlin Korsak  
 Winnona Li  
 Ivana Maldonado Signor  
 Ngoc Nguyen  
 Elinor Oren  
 Deborah Owolabi  
 Danyell Price  
 Leah Pulice  
 Carly Ross  
 Kalynne Schuermann  
 Amrit Sidhu  
 India Whaley

## MENTORS

Barbara Champoux  
 Collete English Dixon  
 Jeanette Flory-Sagan  
 Cheryl Hardt  
 Brenda Karp  
 Jennifer Litwak  
 Marie McLucas  
 Nancy Olah  
 Geri Pacheco  
 Janice Paine  
 Karen Priesman  
 Claire Roberts  
 Tori Robinson  
 Jill Sharif  
 Heather Skinner  
 Michele Stevens  
 Lisa Strope

## 2023 CREW NETWORK FOUNDATION

# Strategic Planning

In 2023, the Foundation held a strategic planning session before the Spring Leadership Summit in Oklahoma City. The plan was approved by the Foundation Executive Committee and was shared with members in late 2023.

## VISION

The CREW Network Foundation creates pathways to opportunities for all women to achieve success in a diverse and inclusive commercial real estate industry. Through the Foundation’s initiatives, women have equal access to industry education, career advancement, pay equity, and professional recognition.

## PURPOSE

To build equitable opportunities for women in the global commercial real estate industry

## MISSION

To build opportunities globally for commercial real estate women through scholarships, career awareness, research, and mentorship

## VALUES

CREW Network Foundation shares the CREW Network values of Inclusivity, Trust, Collaboration, and Influence.

## GOALS

**Goal 1:** Increase the visibility, reach and impact of our industry research and scholarship program.

**Goal 2:** Expand the delivery and impact of our career outreach programs, including UCREW, CREW Careers and mentoring, to emerging leaders and those new to the industry.

**Goal 3:** Expand the CREW Network Foundation outside of Canada and the United States.

(Click [here](#) to read the full version in CREWbiz.)

# LINDA HOLLEMON

## Scholarship Endowment

CREW Network and CREW Network Foundation established the CREW Network Foundation Scholarship Endowment fund in 2008. Donations to this endowment fund support the long-term growth and impact of scholarships for female students in commercial real estate programs.

In 2020, the CREW Network Foundation Scholarship Endowment was renamed to honor CREW Network founder, first president and CEO Linda Hollemon. Following her retirement as CREW Network CEO in 2005, Linda remained a strong supporter of the Foundation and was inducted as a CREW Visionary in 2007. By naming the scholarship endowment in her honor, we recognize her legacy in perpetuity and acknowledge through future generations the fundamental impact of Linda's leadership.

As of December 31, 2023, the endowment fund totaled over \$2.8 million, with \$1.6 million designated by the board of directors and over \$1.2 million of donor-designated contributions.



### Scholarship Selection Committee

Founding chapters each hold one (1) seat on the Scholarship Selection Committee, which reviews and selects the scholars to be recommended to the CREW Network board. We also opened this committee up to members this year, who would apply and then get selected to be a part of this committee. Below is a list of chapters and members who served in 2023.

CREW Chicago	Sara Clark
CREW Vancouver	Madeline Clement
CREW San Diego	Liz Doll
CREW KC	Amy Ehlers
IndyCREW	Julia Evinger
CREW Atlanta	Kirsten Glaser
CREW Orange County	Angela Gomez-Jones
CREW Seattle	Lysette Guevara
CREW Seattle	Christine Hadman
CREW Cleveland	Cecilia Hyun
CREW NJ	Samantha Kane
CREW Richmond	Brenda Karp
CREW Atlanta	Diane Lidz
CREW Houston	Esin Locke
CREW Austin	Darlene Louk
CREW Forth Worth	Monica Luera
CREW Miami	Keren Marti
CREW Philadelphia	Julie Murphy
CREW Washington DC	LaGuardia Myers
CREW Denver	Robin Nolan
CREW Charlotte	Nancy Olah
CREW Nashville	Lori Parker
CREW Orlando	Jennifer Pollock
CREW Lehigh Valley	Julie Profilet-Saucier
IndyCREW	Carrie Sermersheim
Toronto CREW	Natasha Soobramanie
MNCREW	Nicole Urista
CREW Dallas	Bridgett Walker
CREW CT	Janet Wheeler

# CREW NETWORK

## FOUNDATION

### HALL OF FAME

## Hall of Fame

In 2022, CREW Network Foundation introduced a new opportunity exclusively for chapters to support the Foundation and receive year-round recognition for your generosity and dedication to our mission. The Hall of Fame encourages and recognizes chapters that support the endowment through pledged gifts, and advance our mission through career outreach and industry research programs. This opportunity is for all chapters—regardless of size or budget.

To be recognized in the new Hall of Fame, chapters may pledge support through any of these three levels. The commitment includes a chapter donation of \$5,000, \$10,000 or \$20,000 USD or the Canadian dollar equivalent, and hosting a career outreach or industry research program annually. Pledges must be fulfilled within three years.

In 2023, a total of eight new chapters joined the Hall of Fame. Three chapters committed to the A-List level: Birmingham CREW, CREW Los Angeles, and CREWSF, each pledging \$20,000 to the endowment, and committing to a career outreach event annually in their chapter for three consecutive years. In addition, five chapters—CREW Baltimore, CREW Calgary, CREW-Las Vegas, CREW San Diego, and CREW-St. Louis—committed to the Benefactor Level with a \$10,000 pledge and commitment to a career outreach event annually in their chapter for three consecutive years.

#### A LIST (\$20,000)



#### BENEFACTOR (\$10,000)



# CREW Visionaries Donor Program

The CREW Network Foundation Visionaries program was established in 2007 to recognize donors for their cumulative giving to CREW Network Foundation. Participation in the program acknowledges an individual's commitment to support the Foundation's mission. When individuals reach \$10,000 in cumulative lifetime giving\*, they are inducted into the Visionaries program. Each individual receives an exclusive lapel pin or necklace pendant. Each subsequent \$10,000 in cumulative lifetime giving is recognized with the addition of a diamond to the individual's pin or pendant.

## 2023 Inductees

We appreciate the leadership of our Visionaries and all they have done to advance women. The following individuals were inducted into the CREW Network Foundation Visionaries program in 2023:



111<sup>TH</sup> INDUCTEE  
**Traci Miller**

CREW Ft. Lauderdale/Boca Raton,  
CREW Miami and CREW Orlando



112<sup>TH</sup> INDUCTEE  
**Mary Fuller**

CREW Chicago



113<sup>TH</sup> INDUCTEE  
**Andrea Lukens**

CREW Greater  
Philadelphia



114<sup>TH</sup> INDUCTEE  
**Susana Chavez**

CREW Atlanta



115<sup>TH</sup> INDUCTEE  
**Kelli Dickerson**

CREW DC



116<sup>TH</sup> INDUCTEE  
**Allison Robin**

CREW New York



117<sup>TH</sup> INDUCTEE  
**Miriam Brodie**

CREW Northern Virginia  
and CREW DC



118<sup>TH</sup> INDUCTEE  
**Kathleen Coxe**

CREW Northern  
Virginia



119<sup>TH</sup> INDUCTEE  
**Leslie Teskey**

IndyCREW



120<sup>TH</sup> INDUCTEE  
**Pauline Hale**

CREW Orange County



121<sup>ST</sup> INDUCTEE  
**Kathy Brisco**



122<sup>ND</sup> INDUCTEE  
**Allison Rabin**

CREW Chicago



123<sup>RD</sup> INDUCTEE  
**Mary Ricks**

## The following individuals received diamonds in 2023:

- **Kathy Allgier**, CREW DC, First diamond
- **Laurie Baker**, CREW Houston, First diamond
- **Anne Benge**, CREW San Diego, Second diamond
- **Tiffany English**, CREW San Diego, First diamond
- **Brenda Karp**, CREW Coastal Virginia and CREW Richmond, First diamond
- **Jennifer Litwak**, CREW San Diego, First diamond
- **Sara Terry**, CREW Dallas, First diamond
- **Adrienne Bain**, CREW Charlotte and CREW-St. Louis, Second diamond
- **Wendy Mann**, CREW Network CEO, Second diamond
- **Sharon Herrin**, CREW Dallas, Second diamond
- **Patricia "Lynny" Osenbaugh**, Second diamond
- **Kim Addy**, CREW Seattle, Third diamond

\* Cumulative Life Giving Eligibility - Click [here](#) for more detailed information



## Thank you to our generous CREW Visionaries

- |                       |                          |                          |                           |
|-----------------------|--------------------------|--------------------------|---------------------------|
| Kim Addy ★★★          | Dottie Cunningham ★★★★★  | Cynthia Emerson Keefer ★ | Allison Rabin             |
| Marianne Ajemian ★    | Lou Ann Dent             | Lori E. Kilberg          | Jennifer A. Redner        |
| Kathy Allgier ★       | Kelli Dickerson          | Julie A. Kimble          | Barbi Reuter              |
| M. Maureen Anders ★★★ | Angela E. Dugick         | Julie Kriegel            | Claire J. Roberts ★       |
| Linda S. Andreozzi    | Stephanie Duncan         | Beth Lambert-Saul ★      | Allison Robin             |
| Gail S. Ayers ★       | Tiffany English ★        | Anne DeVoe Lawler ★★     | Tori Robinson ★           |
| Laurie Baker ★        | Tina A. Essegian         | Gillian Lawrence         | Joan Rosoff               |
| Adrienne Bain ★★      | Collete English Dixon ★★ | H.F. "Gerry" Lenfest     | Glenn Rufrano             |
| Kris Beason ★         | Mollie Fadule            | Judith D. Levine ★       | Karin Schulz ★            |
| Alison Beddard ★      | Jeanette Flory-Sagan ★★★ | Jennifer Litwak ★        | MaryBeth Shapiro          |
| Anne Benge ★          | Calvin "Cal" Frese, Jr.  | Andrea Lukens            | Jill Sharif               |
| Brenda Bodian ★       | Roberta B. Fuhr          | Cindy Malone ★★★★★       | Jane Snoddy Smith ★★★★★★★ |
| Gayle Bourdeau ★      | Debra Gilbreath          | Wendy Mann ★★            | Kelley J. Smith           |
| Suzanne Brasuell      | Christine Gorham         | Jean M. Meilinger        | Elizabeth E. Solender     |
| Kathy Briscoe         | Bonnie S. Gottlieb       | Goldie Wolfe Miller      | Stephanie Sprenkle        |
| Miriam Brodie         | Vicky Gunning            | Tracy Miller             | Malcolm Stewart ★★★       |
| Regina Bruce ★★       | Pauline Hale             | Holy Neber               | Vicki Summerall ★★★★★     |
| Ginger Bryant ★★      | Cheryl Hardt ★★          | Judith Nitsch ★★         | Sara Terry ★              |
| B. Diane Butler ★★★★★ | Jodi Hartley             | Michele O'Connor         | Sara L. Todd              |
| Armin Cantini         | Conilee Hennersdorf ★★   | Nancy Olah ★             | Sally French Tyler ★★     |
| Jennifer Carey        | Sharon Herrin ★★★        | Lynny Osenbaugh ★★       | Margaret Van Meter        |
| Kathy Carr ★          | Susan Hill               | Talynn Otsuki            | Gerry Ring Waltz          |
| Barbara Champoux ★    | Linda G. Hollemon        | Janice Paine             | Valerie L. Wood           |
| Susana Chavez         | Irene L. Hosford ★       | Diana L. Parker ★        | Cindy Wozny-Carl ★★       |
| Christine Chipurnoi ★ | Victoria L. Joly         | Tara Piurko              | Ann Waeger                |
| Faith Hope Consolo    | Brenda Karp              | Karen Priesman           |                           |

★ Denotes diamonds for each additional \$10,000 given to CREW Network Foundation

# CREW NETWORK FOUNDATION Annual Fundraiser



On Sept. 22, 2023, CREW Network Foundation hosted its annual fundraiser at the historic Fox Theatre in Atlanta and it was an absolute success! It achieved a record high for tickets sold, underwriter support and total income. A total of \$195,400 USD was raised through the event. Thank you to our 54 generous event underwriters and all who purchased tickets.

## MASQUERADE BALL



# Thank You

Underwriters  
2023

## GOLDEN GODDESSES (\$5,000)



Pauline Hale



Brenda Karp

## SILVER SUPPORTERS (\$2,500)



Kim Addy



Laurie Baker



Adrienne Bain



Kris Beason



Barbara Champoux



Christine Chipurnoi



Alyssa Dangler



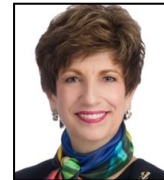
Stephanie Duncan



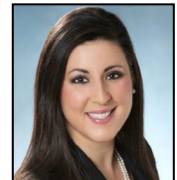
Tiffany English



Jeanette Flory-Sagan



Sharon Herrin



Jennifer Litwak



Cindy Malone



Wendy Mann



Nancy Olah



Allison Rabin



Barbi Reuter



Claire Roberts



Tara Smiley



Sara Terry



Leslie Teskey



Cindy Wozny-Carl



## MOONLIGHT MYSTICS (\$1,000)

Laura Barbero-Buffa

Alison Beddard

Gayle Bourdeau

Jennifer Carey

Aimee Carlson

Kathy Carr

Jennifer Chambers

Collete English Dixon

Lynn Goessling

Christine Gorham

Vicky Gunning

Cheryl Hardt

Lori Kilberg

Andrea Lukens

Marie McLucas

Lindsay Mingee

Holly Neber

Judy Nitsch

Michele O'Connor

Tara Piurko

Stephanie Sprenkle

Vicki Summerall

Sara Terry

Tracey Treger

Karen Whitt

# 2023 CREW Network Foundation Organization Donors

## PLATINUM SUPPORTERS | \$15,000+

CREW Chicago	CREW Houston	CREW Los Angeles
--------------	--------------	------------------

## GOLD SUPPORTERS | \$10,000 - \$14,999

CREW-St. Louis
----------------

## SILVER SUPPORTERS | \$5,000 - \$9,999

CREW Charlotte CREW San Francisco IndyCREW	CREW Dallas CREW Seattle Womble Bond Dickinson (US) LLP	CREW Denver CREW Vancouver	CREW Detroit CREW Baltimore
--	---	-------------------------------	--------------------------------

## BRONZE SUPPORTERS | \$2,500 - \$4,999

BentallGreenOak CREW DC CREW Richmond	Charity Golf International CREW East Bay CREW San Diego	CREW Atlanta CREW Kansas City CREW Tampa Bay	CREW Calgary CREW Orlando The Miami Foundation
---	---	--	--

## COPPER SUPPORTERS | \$1,000 - \$2,499

AZCREW BirminghamCREW Cape Fear CREW CREW Austin CREW Charleston CREW Cleveland CREW Coastal Virginia CREW Columbus CREW CT CREW Fort Lauderdale/ Boca Raton CREW Fort Worth CREW Greater Akron CREW Greater Cincinnati CREW Greater Philadelphia CREW Greenville CREW Idaho CREW Inland Empire CREW Iowa CREW Jacksonville CREW Lehigh Valley CREW Maryland Suburban CREW Miami	CREW Naples/Fort Myers CREW Nashville CREW New York CREW NJ CREW Northern Colorado CREW Northern Nevada CREW Northern Virginia CREW Omaha CREW Orange County CREW Palm Beach/ Treasure Coast CREW Pittsburgh CREW Portland CREW Sacramento CREW San Antonio CREW Silicon Valley CREW Tucson CREW West Michigan CREW-Las Vegas CREW-OKC Edmonton CREW Ella Gelvan Philanthropic Fund Foundry Commercial	Futernick Family Foundation Jessie and Bernard Wolfson Family Foundation KeyBank Real Estate Capital Kimley-Horn and Associates, Inc.	MNCREW New Orleans CREW PT CREW North Carolina Triangle CREW Trinity Capital Advisors, LLC Trinity Partners
--	--	---	--



Participants at a CREW Careers event hosted by CREW-OKC



# 2023 CREW Network Foundation

## Individual Donors

### POWER CONTRIBUTOR | \$2,500+

Kim Addy  
Jodi Bain  
Adrienne Bain  
Laurie Baker  
Kris Beason  
Anne Benge  
Melvyn Bergstein  
Robert Berrin  
Lorraine Berrin  
Kathleen Briscoe  
Miriam Brodie  
Aimee Carlson  
Robert Cava  
Christine Chipurnoi

Kathleen Coxe  
Karen Crystal  
Alyssa Dangler  
Kelli Dickerson  
Stephanie Duncan  
Caryl Englander  
Tiffany English  
Jeanette Flory-Sagan  
Mary Fuller  
Pauline Hale  
Robert Hart  
Sharon Herrin  
Michelle Hudson

Elizabeth Judd  
Jordan Kaplan  
Brenda Karp  
Melissa Kroskie  
Jennifer Litwak  
Cindy Malone  
Wendy Mann  
Traci Miller  
Nancy Olah  
Patricia Osenbaugh  
Sue Paton  
Allison Rabin  
Barbi Reuter

Mary Ricks  
Claire Roberts  
Allison Robin  
Ken Rosen  
Amy Schroeder  
Richard Sepler  
Tara Smiley  
Ellen Smith  
Sara Terry  
Leslie Teskey  
Kristine Wilson  
Rabbi Wolpe  
Cindy Wozny-Carl

### PRINCIPAL CONTRIBUTOR | \$1,500 - \$2,499

Andria Burke  
Susana Chavez  
Julia Evinger  
Lynn Goessling

Linda Hall  
Conilee Hennersdorf  
Judith Levine  
Andrea Lukens

Terry Montesi  
Michele O'Connor  
Stephanie Sprenkle  
Johanna Suarez

Victoria Summerall  
Sandra Taylor  
Karen Whitt  
Howard Wolfson

### ASSOCIATE CONTRIBUTOR | \$500 - \$1,499

Josephine Aberle  
Molly Addington  
Eric Anderson  
Michelle Rhino  
Anderson  
Carrie Gartside Anthony  
Gail Ayers

Sara Bago  
Ryan Bailine  
Laura Barbero-Buffa  
Alison Beddard  
Lynn Stith Bennett  
Jacquelyn Berger  
Wendy Feldman Block

Gil Borok  
Stacey Boston  
Gayle Bourdeau  
Tonya Brandon  
Phyllis Liebman Brill  
Shelly Brodie  
Silvia Castellon Brown  
Ginger Bryant  
Cindy Buchanan  
Marcia Camarda  
Jennifer Carey  
Kathy Carr  
Karen Case  
Jennifer Chambers  
Barbara Champoux  
Stephanie Chung  
Amy Clement  
Krista Costa  
Raymond DeWitt  
Collete English Dixon

Mayva Donnon  
Debra Dupes  
Brenda Ezell  
Jason Feingertz  
Liz Firer-Gillespie  
Isaac Fisher  
Mary Beth Fisher  
Veronica Flores  
William Fuller  
Brooke Gabrielsen  
Kathryn Gallagher  
Theresa Garelli  
Barbara Goldfarb  
Sharon Goldmacher  
Melissa Gombert  
Christine Gorham  
Vicky Gunning  
Christine Hadman  
Lindsey Halter  
Susanne Hanson



Participants at a CREW Career event, Fear CREW

**ASSOCIATE CONTRIBUTOR | \$500 - \$1,499 (continued)**

Cheryl Hardt Susan Hargrove Rachel Harms Kelsey Hathaway Catherine Heath Ana Hernandez Heather Hoffman Joseph Jacoby Brenda Vickrey Johnson Stacey Kamps Arnaud Karsenti Lori Kilberg Julie Kimble Robert Kort David Larr Holly Levy Neal Litman Bruce Macarthur	Anne Madyun Nancy Phaneuf Manning Keren Marti Megan Matthews Sarah Matz Tiffany Hanzik McAllister Marie McLucas Kristen Mills Cally Miltenberger Lindsay Mingee Spencer Moran Pamela Morris Nancy Morse Joseph Natoli Holly Neber Todd Nepola Judith Nitsch Diane Paddison	Cori Palmer Julie Parker Brian Perlin Brian Peters Tara Piurko Katie Plett Deborah Quok Karie Ramsey Terry Reisman Camille Renshaw Michelle Rieve Steven Robinson Tori Robinson Julia Rocco Shawn Rush Mary Salas Sheree Savar David and Lily Serviansky	Benjamin Sherman Heather Skinner Yesenia Marili Smith Sharon Socol Brad Sokol Elizabeth Solender Jessica Street Kathleen Taylor Rhonda Thomas Tracy Treger Elizabeth Trocchio Sally Tyler Elaine Vrooman Amberly Washington Mary Wilken Ellen Wolfson
---	---	---	--

**LEAD CONTRIBUTOR | \$100 - \$499**

Jennifer Aaron Marlene Aasen Denice Abbott Sarah Abrams Marilyn Acheson Linda Adler Gloria Aguilar Kathleen Ahern Susan Ahlheit Debra Aitken Katayoon Alavian Sheryl Alberico Lauren Aleman Holly Alexander Julia Algeo Laura Alice Lisa Allen-Fletcher Ivette Alvarado Alisha Amarin Anuska Amparo Stacy Amrine Jessica Anaya Lisa Andary M. Maureen Anders Brantley Anderson	Laura Anderson Karen Anderson Cristina Anderson Leigh Andres Heidi Andrews Mercedes Angell Adrienne Angelo Rae-Ann Lehman Maryjane Archuleta Rose Arck Sarah Armendariz Denise Armstrong Diane Armstrong Erica Arne Susan Arredondo Julie Ashmore Morgan Atkinson Bridget Aumell Susan Ausman Claudia Avalos Elena Ayers Lacey Bacchus Sally Bach Rebecca Bachand Cody Bailey
--	---



*CREW DC Student Outreach Committee has helped build two unique*

Amy Bailey Candace Baitz Alexis Baker Lani Baker Amy Baker Monica Ball Justice Barber Kim Barger Jennifer Barrat Jennifer Barrett Sandra Barton Olga Bastiaannet LaShawn Bates	Rose Batignani DeeVonda Batres Elise Batsel Ann-Cabell Baum Andi Bawcum Ariel Bedell Barb Beeghly Liz Behan Marie-France Benoit Kay Berkson Cynthia Berman Olga Bershadskiy Sheri Best
--	--

**LEAD CONTRIBUTOR** | \$100 - \$499 (continued)

Malinder Bhan  
 Sophie Bidek  
 Michelle Biedermann  
 Valerie Biggs  
 Lucy Billingsley  
 Ashley Bingham  
 Viveca Bissonnette  
 Linda Bittel  
 Jennifer Black  
 Kristin Blackman  
 MaryAnn Blake  
 Silvia Blanco  
 Heidi Blau  
 Christopher Blissett  
 Brenda Bodian  
 Heidi Boger  
 Benjamin Bojda  
 Brad Bojrab  
 Jillian Bokey  
 Aroona Boodram  
 Jodi Borges-Bradley  
 Dedee Boring  
 Franceen Borrillo  
 Sheila Botting  
 Leanne Bowen  
 Tania Bowman  
 Michelle Boykin  
 Jacqueline Bozzuto  
 Amy Bradac  
 Lannin Braddock  
 Natasha Branch  
 Shelly Branscom  
 Suzanne Brasuell  
 Ashley Breakfield  
 Hannah Breed  
 Barbara Briccotto  
 Rosemary Bright  
 Whitney Brignolo  
 Joanna Britt  
 Deborah Brockley  
 Janet Brooks  
 Emily Brown  
 Kristina Brown  
 Kathryn Brown  
 Kim Brown  
 Lauren Brown  
 Kate Brown

Robyn Brown  
 Courtney Brumbelow  
 Janice Brunson  
 Jacqueline Buhn  
 Karen Buntin  
 Karla Burck  
 Kelli Burke  
 Beth Burke  
 Katie Burlager  
 Melisa Busse  
 Chris Butcher  
 Emily Butler  
 Alyssa Byrd  
 Erin Cabelus  
 Brooke Cade  
 Marie Calabrese  
 Nicole Calcagno  
 Julie Calder  
 Kimberly Cameron  
 Scott Campagna  
 Melissa Campanella  
 Joanne Campanile  
 Cindy Campbell  
 Lindsey Cannon  
 Lindsey Carlson  
 Nicole Carolan  
 Desiree Carpena  
 Chelsea Carroll  
 Shana Carroll  
 Lindsey Carroll  
 Jackie Carroll  
 Mary Carter  
 Doris Carter  
 Kate Carter  
 Annemarie Caruso  
 Tara Carver  
 Laura Cary  
 Jamie Case  
 Kirsten Cessna  
 Birdia Chambers  
 Estelle Chan  
 Julita Chanas  
 Elizabeth Chapman  
 Crystal Chappell  
 Melissa Chaput  
 Angela Cherry  
 Michelle Chien



*Exchanging ideas at Toronto CREW Real Jobs Day event*

Deborah Childress  
 Adrienne Chillemi  
 Alayna Chipman  
 Barbara Chirinos  
 Robin Choate  
 Amanda Christie  
 Jacki Christopher  
 Kacy Cigarroa  
 Dana Clark  
 Melissa Clarke  
 Denise Clemence  
 Michelle Mills Clement  
 Tiffany Clement  
 Ellen Clerkin  
 Monetha Cobb  
 Leslie Cohen  
 Fiona Cohen  
 Jeri cohen  
 Alba Colavitti  
 Jessica Colby  
 Mindy Colden  
 Dana Cole  
 Shanna Cole  
 Lori Coleman  
 Joy Coleman  
 Heidi Coletto  
 Melissa Collar  
 Lynda Collie  
 Sara Collova  
 Carrie Combes  
 Dana Compton  
 Brenda Compton  
 Laura Concannon  
 Ann Cone

Margo Conley  
 Anne Conner  
 Monica Conners  
 Andrea Connors  
 Kristin Conroy  
 Crystal Cook  
 Leslie Cook  
 Patricia Cooper  
 Valerie Corbett  
 Janne Cordova  
 Sam Corrigan  
 Megan Cottrell  
 Amanda Coughlan  
 Alexandra Craft  
 Jennifer Cranston  
 Amanda Criscione  
 Dianne Crocker  
 Emily Crockett  
 Sara Croot  
 Sarah Crouch  
 Bo Crouse-Feuerhelm  
 Kristen Croxton  
 Jhoie Cruz  
 Jacqueline Cruz-Bustillo  
 Sarah Cunningham  
 Margaret Cunningham  
 Elena Cutshall  
 Anita Dabney  
 Kelly Darby-Asher  
 Bonnie DaSilva  
 Deb Davis  
 Danette Davis  
 Romona Davis  
 Kaelyn Davis

**LEAD CONTRIBUTOR** | \$100 - \$499 (continued)

Debbie Deason  
 Michelle DeCarlo  
 Shonda Decker  
 Tami DeClercq  
 Elizabeth DeCuir  
 Sadie Defatte  
 Meredythe DeJesus  
 Kayla DeJohn  
 Kori DeJong  
 Frances Delgorio  
 Megan Proulx Dempsey  
 Nathan Dent  
 Amy DePenning  
 Ashia Derksen  
 Christine Deschaine  
 Justine Deshayes  
 Anne Desormier-Cartwright  
 Diana Dessy  
 Lisa Dettore  
 Ashley Deweese  
 Amanda DeYoung  
 Annemarie DiCola  
 Laura DiTommaso  
 Pilar Willis Dixon  
 Jackie Dodd  
 Kirsten Dolan  
 Melanie Domres  
 Pamela Donaldson  
 Lan Donovan  
 Jennifer Dorgan  
 Emily Dorough  
 Genevieve Douglass  
 Doris Drain  
 Lynette Dreitz Fort  
 Shonnah Driver  
 Angela Drumm  
 Patty Trepp Drummond  
 Flora D'Souza  
 Lenora DuBose  
 Melanie Ducholke  
 Kate Duncan  
 Janis Duncan  
 Ginny Dunn  
 Kristy Dutch  
 Angie Earlywine  
 Patricia Earnest

Maddison Edwards  
 Sarah Edwards  
 Amy Ehlers  
 Emily Ehringer  
 Martin Eisele  
 Anna Eldridge  
 Joni Elekes  
 Kimberly Enders  
 Laura Engen  
 Krystle English  
 Kristen Ernst  
 Tina Essegian  
 Donna Evers-Southard  
 Trisha Ewert  
 Vicki Facto  
 Kathleen Fahy  
 Colleen Fain  
 JJ Jacqueline Falk  
 Joan Falvey  
 Mindi Faris  
 Karen Farrell  
 Andrea Fazendin  
 Jill Fedie  
 Jodi Fedor  
 Lindsey Feesl  
 Hilary Fentress  
 Christina Fenwick  
 Lori Ferraro  
 Mimi Fersch  
 Collier Field  
 Debora Field  
 Barbara Fife  
 Sarah Finley  
 Reesa Fischer  
 Ximena Fischer  
 Robyn Fisher  
 Daniela Fitzgerald  
 Sheena Fitzpatrick  
 Michelle Flagg  
 Casey Flannery  
 Bradley Flickinger  
 Brandi Floyd  
 Theresa Floyd  
 Tabitha Fong  
 Jennifer Forbes  
 LaTrese Forest



*Speakers at a UCREW event hosted by CREW Boston*

Larisa Forester  
 Carol Fortenberry  
 Angye Fox  
 Brittany Fox  
 John Franco  
 Tracie Frazier  
 Laurinda Frederick  
 Jillian Fredericks  
 Leanne Freed  
 Rebecca Friedberg  
 Andrea Friedman  
 Katherine Howe Frilot  
 Adriana Fritsch  
 Lauren Fry  
 Ashley Frysinger  
 Colleen Fullerton  
 Liz Gabor  
 Michelle Gail  
 Ashley Galica  
 Jeanne Gallagher  
 Aliza Gallo  
 Jennifer Garrett  
 Noelle Garsek  
 Steve Gassaway  
 Sandra Gaurin  
 Jenna Geigerman  
 Marija George  
 Kim Ghez  
 Gilles Ghez  
 Dainan Gibson  
 Ken Gilday  
 Elise Giles  
 Roslyn Gilstrap  
 Teresa Giltner  
 Bianca Giron  
 Alexandra Gish

Terry Glawe  
 Stacy Gleason  
 Nori Gleeman  
 Dana Kreis Glencer  
 Stacey Glenewinkel  
 Erica Godun  
 Erin Goldsmith  
 Molly Gole  
 Richard Gonsor  
 Laura Gonzales  
 Lydia Gonzales  
 Rosie Gonzales  
 Elizabeth Gooch  
 Amanda Goodspeed  
 Latricia Gordon  
 Bonnie Gottlieb  
 Julia Grachova  
 Kasie Grant  
 Kristina Grants  
 Becca Graydon  
 Laura Gregoriadis  
 Callie Gregory  
 Jeffrey Greif  
 Heather Griffin  
 Ariel Grobman  
 Jessica Gronau  
 Claudia Guglielmo  
 Colleen Gurkin  
 Laurie Gustafson  
 Vanessa Gutierrez  
 Robin Haddock  
 Dannah Hagerty  
 Melissa Hall  
 Alison Hall  
 Cynthia Hammond  
 Mona Hand

Stephanie Handley  
 Stacey Hanrahan  
 Kimberly Hansen  
 Marilyn Hansen  
 Mari Hansen  
 Genevieve Hanson  
 Terri Harrington  
 Jennifer Harris  
 Lynn Harris  
 Paula Harris  
 Allison Harrison  
 Liza Hart  
 Rayan Hart-Culberson  
 Edie Hartman  
 Pamela Hartsell  
 Jay Haselden  
 Sally Hasenfratz  
 Laura Havel  
 Arlena Hawthorne  
 Laura Haynes  
 Cassie Hays  
 Sarah Hazani  
 Darlene Heater  
 Brittany Heath  
 Jessica Heckle  
 Elizabeth Hedrick  
 Yvonne Heerema  
 Susan Held  
 Peggy Henderson  
 Cynthia Henley  
 Teresa Henning  
 Rebecca Henry  
 Meghan Henselwood  
 Kristen Hernandez  
 Kathy Hernandez  
 Kristy Hess  
 Laura Hester  
 Andrea Heuson  
 MaryBeth Heydt  
 Amanda Hibberts  
 Rachel Hickenbottom  
 Kim Hickman  
 Kennedy Hicks  
 Kellie Hill  
 Jennifer Hillman  
 Chandler Hobson

Whitney Hodges  
 Kimberly Hogan  
 Janeen Hogue  
 Nicole Holcomb  
 Moira Holland  
 Christine Holman  
 Kye Holtan-Brown  
 Madison Honeywell  
 Jennifer Hoover  
 Roseanne Hope  
 Randy Hopkins  
 Ann Horenstein  
 Kristin Hornberger  
 Catherine House  
 Jenna Howard  
 Elaine Howard  
 Tracy Howren  
 Leeza Hoyt  
 Jannie Hueting  
 Shannon Huffer  
 Christine Hughes  
 Karen Hurd  
 Paris Hurley  
 Nicol Hussa  
 Laurie Hutner  
 Cecilia Hyun  
 Ann Inesedy  
 Katie Irwin  
 Matt Irwin  
 Olena Ivanenko  
 Linda Ivanoff  
 Erica Jablonsky  
 Sue Jacobson  
 Ashley Jager  
 Sara Jansen  
 Jennifer Janson  
 Sallie Jarosz  
 Cloteen Jasmin  
 Nicki Jassy  
 Katelyn Jeffcoat  
 Samantha Jefferson  
 Michelle Jenkins  
 Tessa Jennings  
 Marcie Jensen  
 Emily Johnson  
 Dawn Johnson

Ginger Johnson  
 Janet Johnson  
 Julie Johnson  
 Leslie Johnson  
 Angel Jones  
 Kelley Jones  
 Tanya Jones  
 Thomas Jones  
 Rebecca Jordan  
 Samantha Jordan  
 Trina Joseph  
 Thresa Joyce  
 Stacey Juran  
 Mary Jury  
 Danielle Kaiser  
 Judy Kaiser  
 Cecilia Kane  
 Cindy Kaneer  
 Camille Kanofsky  
 Stacy Kaplowitz  
 Eliza Karagezian  
 Jessica Karpatt  
 Karen Karwoski  
 Julie Katora  
 Dale Katzenberg  
 John Kauppila  
 Carole Kaye  
 Maj-Lene Keech  
 Cynthia Keliher  
 Nichole Kelley  
 Amy Kellogg  
 Emily Kelly  
 Jenni Kelly  
 Mary Jo Kelly  
 Tammy Kelly  
 Brianne Kelsey  
 Kathryn Kemp  
 Andrea Kenney  
 Mindy Kermes  
 Tanya Keshishian  
 Helen Kessler  
 Rosalie Keszler  
 Melanie Kido  
 Kristin Killgore  
 Angie Kim  
 Katie King

Laura King  
 Eloise Klein  
 Samantha Klein  
 Danny Klempfner  
 Ralph Knauss  
 Gwen Knight  
 Dorrie Knizatko  
 Briana Koch  
 Lada Kocherovsky  
 Bruce Kohrman  
 Susan Korath  
 Krista Korinis  
 Melinda Korth  
 Cincha Kostman  
 Denise Kouril  
 April Kovari  
 Shea Kracheck  
 Angela Kralovec  
 Michele Krause  
 Julie Kriegel  
 Elizabeth Krol  
 Ashley Kuhn  
 Sandra Kuhns  
 Stacy Kurko  
 Ligia Labrada  
 Lisa Lackovic  
 Cheryl LaLetta  
 Robin Landow  
 Leslie Lane  
 Lauren Langham  
 Linda Larabee  
 Amy Lauber  
 Gillian Lawrence  
 Kelly Leanos  
 Catherine Leap  
 Christie Lee  
 Gina Lee  
 Jessica Lee  
 Krystal Lee  
 Tessa Leftwich  
 Paul Leonard  
 Amanda Leporowski  
 Trudi Lesser  
 Jane Levin  
 Jeffrey Levin  
 Karen Levine

**LEAD CONTRIBUTOR** | \$100 - \$499 (continued)

Ilana Levitt  
 Jennifer Levy  
 Michelle Lewis  
 Christina Lewis  
 Christy Lewis  
 Tina Lichens  
 Jenny Liles  
 Amy Linton  
 Caroline Linton  
 Brandy Little  
 Megan Little  
 Pamela Little  
 Lisa Llewellyn  
 Linda Loewenstein  
 Naomi Lohnes  
 Kelly Long  
 Dan Longshore  
 Jody Longwill  
 Dinora Lopez  
 Tiffani Lorenz  
 Liz Love  
 Rosemary Loverdi  
 Casey Lowery  
 Jessica Lozon  
 Yunia Lubega  
 Patrick Luem  
 Sarah Luem  
 Monica Luera  
 Nancy Lundeen  
 Virginia Luther  
 Elizabeth Lutz  
 Melissa Lutz  
 Tobi Lutz  
 Linda Ly

Debra Swearingen Lyles  
 Tomi Jo Lynch  
 Jane Lyons  
 Rebecca Machinga  
 Cindy MacMillan  
 Koo MacQueen  
 Steve Magento-Tester  
 Jane Mahaffie  
 Kristin Maletta  
 Kelly Mancha  
 Vitina Mandella  
 Kelly Manke  
 Koren Manning  
 SaraBeth Mantia  
 Kim Marks  
 John Marmesh  
 Alana Marrazzo  
 Jennifer Martin  
 Leah Martin  
 Margaret Martin  
 Megan Martin  
 Terry Martin-Denning  
 Carolyn Martinez  
 Katie Martinovic  
 Ana Martins  
 Lori Mason Curran  
 Susan Matejcek  
 Chris Matejka  
 Shelly Maurer  
 Sam Maynard-Hall  
 Jennifer Mazaway  
 Sam McCabe  
 Maureen McCaffrey  
 Tina McCall

Edyie McCall  
 Regina McCann  
 Jill McCarthy  
 Tabetha McCartney  
 Andrea McClain  
 Laura McCollum  
 Jane McCollum  
 Danielle McCombs  
 Beth McDonald  
 Jen McDonald  
 Christopher McGarey  
 Melissa McGarry  
 Gretchen McGill  
 Justine McGinley  
 Andrea McGowan  
 Madeline McGrane  
 Ann McGuire  
 Joanne McKinney  
 Brett McLarney  
 Shawn McMillan  
 Kris McNamee  
 Shelley McPhatter  
 Anamaria Meanes  
 Sue Meier  
 Jean Meilinger  
 Marisa Melchior  
 Jerri Menaul  
 Sarah Mergy  
 Jody Merritt  
 Steven Messing  
 Tom Metcalfe  
 Emily Meyer  
 Peter Miceli  
 Brittany Michael  
 Jennifer Miles  
 Elizabeth Bryson Miller  
 Ellen Miller  
 Ericka Miller  
 Dina Miller  
 Kelly Hewitt Miller  
 Edward Milton  
 Shannon Mitchell  
 Sharon Moe  
 Lisa Moehle  
 Amy Moen  
 Maria Mollise

Melissa Molyneaux  
 Darcy Monday  
 Kelly Monroe  
 Cheryl Moody  
 Constance Moore  
 Lori Moore  
 Cheryl Moore  
 Jessica Moreno  
 Ann Morris  
 Amara Morrison  
 Lesley Morrison  
 LaVon Morrow  
 Jeffrey Morse  
 Assem Mourad  
 Shaundy Muchin  
 Naomi Muha  
 May Mui  
 Kathy Mulgrew  
 Krystal Mullen  
 Dan Munier  
 Joan Murrell  
 Laura Murrer  
 Sue Myers  
 Bruce Nachman  
 Sharat Nagaraj  
 Julianne Nalan  
 Shaima Namazifard  
 Lori Nardone  
 Ann Natunewicz  
 Milena Nazaruk  
 Barbara Needle  
 Robert Nelson  
 Fabienne Nelson  
 Heather Nelson  
 Paula Nelson  
 Nicole Nelson  
 Cara Nelson  
 Stacia Neugent  
 Laura Nguyen  
 Jeannie Nguyen  
 Jacqueline Nickolaus  
 Alicia Nikifarava  
 Cristy Nine  
 Kathy Noe  
 Samuel Noel  
 David Noonan



Participants at a UCREW event hosted by CREW San Antonio

Patricia Nooney  
 Amanda Norris  
 Tara Norton  
 Niki Norton  
 Angela Novalski  
 Yvonne Nyakana  
 Therese O'Brian  
 Catherine O'Connor  
 Claire O'Connor  
 Barbara Oddo  
 Rachael Oelke  
 Mellissa Oliver  
 Jacqueline O'Malley  
 Jackie Orcutt  
 Sarah Goss O'Rielly  
 Kelly Ormsby  
 Charles Orozco  
 Brandey Orsag  
 Amanda Osburn  
 Judy O'Shaughnessy  
 Heather O'Toole  
 Ludivine O'Toole  
 Kaitlin Ouverson  
 Jerry Owen  
 Jill Owen  
 James Padron  
 Janice Paine  
 Jennifer Paisley  
 Diana Palecek  
 Tina Pappas  
 Lori Parker  
 Elizabeth Parnes  
 Jean-François  
 Pare-Zagrodnik  
 Melinda Parrish-  
 Brumfield  
 Susan Passmore  
 Shana Patrick  
 Serena Patterson  
 Camille Patterson  
 Marlene Patton  
 Monique Payan  
 Kathryn Payne  
 Rebekah Payne  
 Tammy Pearce  
 Cathy Peate

Jeanne Peck  
 Michele Pellico  
 Dorothy Peltz  
 Lizbeth Pena  
 Carrie Perez  
 Catalina Perez  
 Megan Perkins  
 Nadine and Sidney Pertnoy  
 Damon Peters  
 Abigail Peterson  
 Dannielle Peterson  
 Casey Petit  
 Rosalin Petrucci  
 Katie Phillips  
 Marcy Phillips  
 Nathalie Picard  
 Karen Pierre  
 Michelle Pink  
 Patricia Pinto  
 Danielle Pinto  
 Jennifer Platt  
 Kristen Pleasants  
 Susan Pohl  
 Anne Pollack  
 Misty Ponce  
 Annette Popiel-Hammerle  
 Lain Porter  
 Scarlet Powell  
 Barbara Price  
 Valeria Price  
 Mert Price  
 Karen Priesman  
 Rebecca Pritchett  
 Jacqueline Pueppke  
 Marie Purkert  
 Twyla Purschke  
 Elizabeth Pye  
 Alisa Pyszka  
 Lisa Quateman  
 Hyon Rah  
 Jennifer Raike  
 Debora Ramirez  
 Crystal Ramos  
 Neda Rastegari  
 Connie Raub  
 Debbie Reading

Jolynn Reali  
 Gladys Reed  
 Stacy Reed  
 Lauren Reeves  
 Blyth Rehberg  
 Abigail Reichling  
 Jaclyn Reid  
 Art Rendak  
 Joan Renner  
 Samantha Renz  
 Michelle Reyman  
 Jamie Reynolds  
 Brittany Richards  
 Loryssa Rippey  
 Laura Riso  
 Joanne Roach  
 Nancy Roach  
 Gayle Roberts  
 Christie Rock  
 Rebecca Rodriguez  
 Allison Rojas  
 Dawn Romero  
 Iris Rosa  
 Katie Rose  
 Crystal Roseberry  
 Courtney Rosenkrantz  
 Shelly Rosett  
 Shelley Rosetta  
 Tillie Ross  
 Jessica Rossi  
 Dawn Royle  
 Kim Rubin  
 Lisa Ruggles  
 Kelly Rule  
 Ryan Rusler  
 Monica Russell  
 Elizabeth Russell  
 Kat Sabo  
 Laraine Saldivar  
 Jaclene Sammons  
 Stephen Sanders  
 Cindy Santilena  
 Rachel Santos  
 Cherie Santos-Wuest  
 Serena Sayani  
 Christine Sbarra

David Scher  
 Jennifer Scher  
 Pamela Schiel  
 Jane Schiff  
 Rachel Schiftan  
 Sherry Schmidt  
 Mel Schock  
 Kristen Schrader  
 Michael Schrum  
 Beth Schultz  
 Darcey Schumacher  
 Maxine Schwartz  
 Isabelle Schwarz  
 Alex Schwerdt  
 Christine Sciarrotta  
 Kimberly Seay  
 Lisa Segal  
 Lisa Serafin  
 Misty Shaffer  
 Jill Sharif  
 Jodi Shea  
 David Shear  
 Muna Shehadeh  
 Karen Sheldon  
 Morgan Shepherd  
 Deborah Sheridan  
 Josie Shumar  
 Shawna Sieck  
 Carolyn Sillin  
 Julia Silva  
 William Silver  
 Linda Simmons  
 Kristy Simonette  
 Vince Simonetti  
 Elvira Simoni  
 Lacie Simonton  
 Allison Simpson  
 Allison Simpson  
 Ravpreet Singh  
 Catherine Singleton  
 Jennifer Skiba  
 Kelly Sklar  
 Mary Slade  
 Mechelle Slater  
 Katherine Slater  
 Jenelle Smagala

**LEAD CONTRIBUTOR** | \$100 - \$499 (continued)

Korinne Smillie  
 Hether Smith  
 Stephanie Smith  
 Margo Smith  
 Akia Smith  
 Donna Smith  
 Suzanne Smith  
 Fred Smith  
 Leslie Smith  
 Tiffany Smith  
 Leah Smith  
 Rebecca Smith-Zakowicz  
 Olga Smylie  
 Nicole Solar  
 Angie Sommer  
 Rob Speir  
 Cheryl Spitalnick  
 Danielle Sprouls  
 Susan Stead  
 Elizabeth Steele  
 Tara Steell  
 Joanna Stevens  
 Michele Stevens  
 Julia Stevenson  
 Ashley Stewart  
 Kelsey Stone  
 Sheri Stone  
 Kristi Straw  
 Bonnie Stretz  
 Cheryl Strickland  
 Teresa Stuebben  
 Nancie Sturges  
 Joy Sullivan  
 Amanda Sullivan  
 Brandi Susewitz  
 Crista Swan  
 Lynne Sweet  
 Susan Swift  
 Sue Sylvester  
 Jodi Tagessen  
 Lori Bliss Tambone  
 Jennifer Tammen  
 Dana Tanner  
 Mary Tappouni

Andrea Taylor  
 Cindy Taylor  
 Julia Taylor  
 Laura Taylor  
 Lina Telese  
 Ashley Terrell  
 Allie Thacker  
 Mythili Thiagarajan  
 Jennifer Thomas  
 Christy Thompson  
 Teri Thompson  
 Sunny Thompson  
 Tamie Thompson  
 Stephanie Titus  
 Erin Todd  
 Sara Todd  
 Jacquelyn Tomlinson  
 Mallory Toth  
 Sheila Traficante  
 Erin Traxler  
 Yvette Trevino  
 Andrea Troccia  
 Libbey Tucker  
 Harry Tudor  
 Vira Turchinyak  
 Lydia Turczyn  
 Bruce Turkel  
 Brianna Bartelsmeyer  
 Turner  
 Jessica Turner  
 Yvette Turner  
 Susan Turner  
 Hope Tz Schmalzl  
 Irene Tzanani  
 Nicole Urista  
 Colleen Vacelet  
 Erin Valentine  
 Dale van Gelder  
 Katherine VanBerschot  
 Erica Vanover  
 Teresa Vasquez  
 Iris Velasquez  
 Kasey Vena  
 Galit Ventura-Rozen

Laura Veo  
 Christine Verfurth  
 Tabitha Vickers  
 Alexis Volen  
 Heather Volz  
 Sandy Vuillod  
 Anne Vulcano  
 Ann Waeger  
 Tonya Wagle  
 Leslie Wagner  
 Eva Wai  
 Earl Wald  
 Cassie Walker  
 Tammy Walker  
 Daniel Wallace  
 Frederick Wallace  
 Michele Walsh  
 Joan Walters  
 Kalli Waltner  
 Stella Walton  
 Elizabeth Ward  
 Johanna Ward  
 Elizabeth Ward  
 Pamela Warnock  
 Janine Warren  
 Michelle Warriner  
 Alicia Washeleski  
 Sherry Watkins  
 Mandi Wedin  
 Heather Weerheim  
 Peggy Wei  
 Virginia Weida  
 Krone Weidler  
 Lindsay Welch  
 Jaren Wells  
 Tina West  
 MaryKay West  
 Alyson Westfall  
 Janet Wheeler  
 Lynne White  
 Karen Widmayer  
 Melissa Wiechman  
 Yvonne Wild  
 Nichole Wiley

Melissa Wilhelm  
 Jodi Wilkeson  
 Misty Moore Willard  
 Samantha Williams  
 Joseph Williams  
 Jenna Williams  
 Jonathan Williams  
 Judy Willoughby  
 Scott Willson  
 Andrea Wilson  
 Kim Wingerak  
 Cindy Winters  
 Kmeal Winters  
 Carrie Woerdeman  
 Andrew Wolf  
 Melanie Wolfington  
 Marsha Womack  
 Stacey Woods  
 Elaine Worzala  
 Jenifer Wright  
 Rebecca Wymore  
 Michelle Yaklin  
 Minja Yan  
 Whitney Yelm  
 Ellen Yeung-Cheng  
 AJ Yoon  
 Valery Young  
 Maura Young  
 Laura Young  
 Jennifer Young  
 Katie Yuen  
 Beth Zafonte  
 Cristina Zampieri  
 Kelli Zaremba  
 Christie Zawtock  
 Molly Zbojniewicz  
 Beth Jo Zeitzer  
 Amy Zeko  
 Patricia Zelayandia  
 Elisandra Ziebell  
 Gary Ziegler  
 Jan Ziegler  
 Christine Zinkgraf  
 Tom Zuk

\*The donors listed in the 2023 CREW Network Foundation Annual Report are individuals and organizations whose \$100+ contributions to CREW Network Foundation were received in the calendar year. This list, however, is not inclusive of the generous support received by CREW Network Foundation from members and chapters through chapter fundraising events including, but not limited to, auctions/raffle item donations or purchases. If there are questions or concerns about the accuracy of this report, please submit your inquiries to CREW Network Foundation.





**HEADQUARTERS**

1201 Wakarusa Dr., Suite D  
Lawrence, KS 66049 USA  
T: +1 (785) 832-1808  
F: +1 (785) 832-1551



**CANADIAN REGIONAL OFFICE**

2500-1 Place Ville Marie  
Norton Rose Canada  
Montreal, QC H3B 1R1