

# 2025 Executive Board

## OFFICERS



**Sarah Luem**  
President  
(Capes Sokol)  
*Mentorship Liaison*



**Jen Nevil**  
President Elect  
(Lamar Johnson Collaborative)  
*Programs Liaison*



**Erin Valentine**  
Immediate Past President  
(McCarthy Building Companies)  
*Education & Engagement Liaison*



**Jane Maddox**  
Delegate,  
Strategic Planning Chair  
(Anders CPAs + Advisors)  
*Golf Liaison*



**Sarah Ross**  
Treasurer  
(State Bank)  
*Finance Liaison*



**Melody Cooper**  
Secretary  
(Gray Design Group)  
*Communications Liaison*

## DIRECTORS



**Connie Kroenung**  
Director  
(Working Spaces)  
*DEI Liaison*



**Molly Mastin**  
Director  
(Colliers International)  
*Young Professionals Liaison*



**Samantha Hurrell**  
Director  
(HOK)  
*Ambassadors Liaison*



**Liz Austin**  
Director  
(Lamar Johnson Collaborative)  
*Sponsorship Liaison*



**Christine Beck**  
Director  
(Stifel Bank & Trust)  
*Membership Liaison*



**Rebecca Thessen**  
Director  
(L3 Corporation)  
*Awards Liaison*



# 2025 Advisory Board

## AMBASSADORS COMMITTEE



**Judy Glik**  
Ambassadors Chair  
(Arcturis)



**Jenna Knatt**  
Ambassadors Co-Chair  
(CI Select)

## AWARDS COMMITTEE



**Amanda Norris**  
Awards Chair  
(CORE10 Architecture)



**Brandi Ball**  
Awards Co-Chair  
(Cole & Associates)

## COMMUNICATIONS COMMITTEE



**Michele Chapman**  
Communications Chair  
(ColorArt)



**Sarah Finley**  
Communications Co-Chair  
(Lochmueller Group)

## DEI COMMITTEE



**Helen Lee**  
DEI Chair  
(Tao & Lee Architects)



**Lalima Chemjong**  
DEI Co-Chair  
(Christner Architects)



# 2025 Advisory Board

## EDUCATION & ENGAGEMENT COMMITTEE



**Michelle Lewis**  
Education & Engagement Chair  
(Bank of America)



**Susie Bonwich**  
Education & Engagement Co-Chair  
(PGAV Planners)

## GOLF COMMITTEE



**Laura Jones**  
Golf Chair  
(RL Jones)



**Colleen Nigro**  
Golf Co-Chair  
(Remiger Design)

## LEGACY BOARD COMMITTEE



**Tracey Howren**  
Legacy Board Co-Chair  
(UMB Bank)



**Lynn Goessling**  
Legacy Board Co-Chair  
(Armstrong Teasdale)

## MEMBERSHIP COMMITTEE



**Katie Goldberg**  
Membership Chair  
(IMEG Corp)



**Cathy Campbell**  
Membership Co-Chair  
(Saint Louis Bank)

## MENTORSHIP COMMITTEE



**Renee La Bruyere**  
Mentorship Chair  
(Horner & Shifrin)



**Taylor Branstetter**  
Mentorship Co-Chair  
(Stifel Bank & Trust)



# 2025 Advisory Board

## PROGRAMS COMMITTEE



**Lisa Moehle**  
Programs Chair  
(Artori Group)



**Kate Ward**  
Programs Co-Chair  
(Steelcase)

## SPONSORSHIP COMMITTEE



**Kourtney Graham**  
Sponsorship Chair  
(Kadean Construction)



**Nicole Schupmann**  
Sponsorship Co-Chair  
(CannonDesign)

## STRATEGIC PLANNING COMMITTEE



**Jane Maddox**  
Strategic Planning Chair  
(Anders CPAs + Advisors)

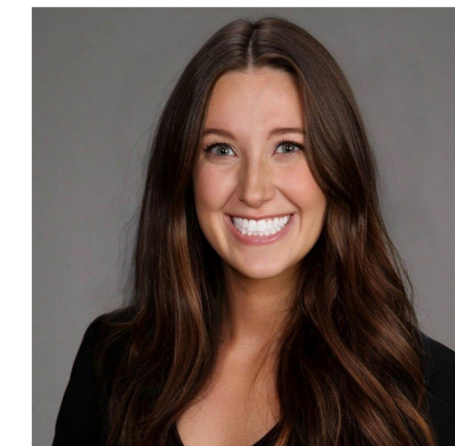


**Michelle Hamilton**  
Strategic Planning Co-Chair  
(Cobalt Construction Consulting)

## YOUNG PROFESSIONALS COMMITTEE



**Kelly Long**  
Young Professionals Chair  
(Desco Group)



**Emily Ackley**  
Young Professionals Co-Chair  
(NAI Desco)