

# 2024

## ANNUAL REPORT



**CREW**  
NETWORK  
FOUNDATION



# Letter from the Chair

It is with gratitude and honor on behalf of our volunteer leaders that I share with you the achievements of CREW Network Foundation in 2024. In a year of continued economic uncertainty and industry challenges, generous donors continued to move our mission forward, support women in commercial real estate, and achieve unprecedented success.

Our Foundation Champion Directors, Chapter Champions and staff showed remarkable dedication, and passion for our mission in raising funds and expanding our reach and support. In 2024, CREW Network Foundation:

- Awarded 40 scholarships totaling \$275,000 USD to university students pursuing careers in commercial real estate
- Raised more than \$131,000 through three giving campaigns—Rise Up, Member May, and Giving Tuesday
- We held our most successful annual fundraising event to date, achieving a record high for tickets sold, underwriter support, and total raised (\$207,000!)
- Inducted four new CREW Visionaries and added diamonds to 12 Visionary pins and pendants

In the following pages of this report, you will find a recap of our 2024 achievements and impact, our inspiring scholars, and recognition of our generous supporters and volunteers.

Thank you for your commitment to CREW Network Foundation. It is with your continued support and dedication that we will continue to be the leader in accelerating success for all women in the global commercial real estate industry.

With gratitude,

A handwritten signature in black ink that reads "Vicki Summerall". The signature is fluid and cursive, with the first name "Vicki" being more prominent.

**Vicki Summerall**

2024 CREW Network Foundation Chair

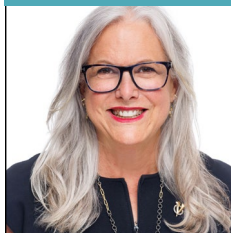
Republic Title of Texas

CREW Dallas and CREW Fort Worth

# CREW NETWORK FOUNDATION

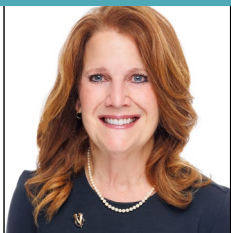
## 2024 Leadership

### EXECUTIVE COMMITTEE



#### CHAIR

**Vicki Summerall**  
CREW Dallas and  
CREW Fort Worth  
Republic Title of Texas



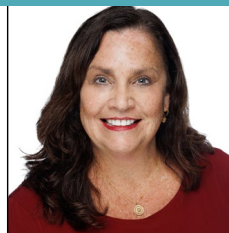
#### IMMEDIATE PAST CHAIR

**Claire Roberts**  
MNCREW  
Colliers



#### CREW NETWORK IMMEDIATE PAST PRESIDENT

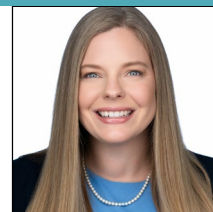
**Alyssa Dangler**  
CREW Coastal Virginia  
Williams Mullen



#### PRESIDENT

**Wendy Mann**  
CEO  
CREW Network

### CREW NETWORK STAFF



#### TREASURER

**Jancie Stucke**  
CFO/COO



#### VICE PRESIDENT

**Laura Lewis**  
Chief Communications  
Officer, CREW Network



**Nichole Vanner**  
Foundation Program  
Manager, CREW Network

### CHAPTER CHAMPIONS



**Dianne Crocker**  
CREW Boston  
LightBox



**Kelli Dickerson**  
CREW DC  
BentallGreenOak



**Cecilia Hyun**  
CREW Cleveland  
Siegel Jennings Co.



**Stacey Kamps**  
CREW-St. Louis  
Keeley Companies



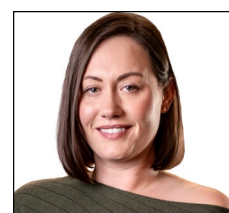
**Monica Luera**  
CREW Fort Worth  
Trademark Property  
Company



**Lindsay Mingee**  
CREW Inland Empire  
Elm Commercial  
Real Estate



**Allison Robin**  
CREW New York  
Envioe Projects LLC



**Heather Skinner**  
AZCREW  
McKesson Corp.



**Michele Stevens**  
CREW Iowa

#### CHAIR EMERITUS

**Elizabeth E. Solender**, CREW Dallas

#### HONORARY TRUSTEES

**M. Maureen Anders**, AZCREW

**Dottie Cunningham**, CREW New York

**Bonnie S. Gottlieb**, CREW DC

**Irene L. Hosford**, CREW Dallas

**Anne DeVoe Lawler**, CREW Seattle

**Diana L. Parker**, CREW Miami





# Building a Foundation for the Future

CREW Network Foundation is the charitable arm of CREW (Commercial Real Estate Women) Network and the only organization dedicating its resources solely towards accelerating success for all women in the global commercial real estate (CRE) industry.

## Who We Serve

In a predominately male industry that is impacted by gender bias, CREW Network Foundation provides girls and women with education, support, and advocacy. We are growing the pipeline of women into commercial real estate with programs that educate women and girls about the career opportunities available to them, as well as providing resources to students pursuing CRE careers.

We bring women in commercial real estate together to share ideas and resources, invest in businesses, work to find solutions to common challenges and share opportunities for growth. We also encourage gender equity and diversity, and educate commercial real estate companies about the benefits of having greater diversity throughout their talent pipeline, employees, board and leadership.

## What We Do: Educate

The CREW Network Foundation Scholarship program supports students as they pursue university-level

education that will lead to careers in commercial real estate. The number of scholarships awarded each year to students attending college full-time is based upon the availability of interest income from the endowment, contributions, and matching corporate funds. Scholarship Endowment funds are permanently restricted and only investment earnings from those contributions can be used for funding current scholarships. Annual Scholarship funds are temporarily restricted for the purpose of funding current scholarships.

Scholarships are available to female (or those who identify as female) junior and senior undergraduate students, and enrolled full time in graduate programs to cover the cost of tuition and books. Applicants must have a minimum GPA of 3.5 on a 4.0 scale and must be a citizen of the U.S. or Canada to be eligible. Their major must be included in one or more of the CREW Network Qualified Fields of Commercial Real Estate (QFCRE) shown on the right.

- Accounting
- Acquisitions/Dispositions
- Appraisal
- Architecture
- Asset Management
- Brokerage
- CRE Business Development
- Commercial Insurance
- Commercial Lending
- Construction Management/  
General Contracting
- Consulting
- Corporate Real Estate
- Cost Segregation
- Economic Development
- Education
- Engineering
- Environmental
- Environmental, Social and  
Governance (ESG)
- CRE Executive
- Facility Management
- Finance
- CRE Human Resources
- Interior Design/Space Planning
- Investment Management
- Investor Relations
- Land Use Planning and Zoning
- Land Surveying
- Law
- Market Research
- Program Management/  
Project Management
- Property Management
- Public Sector
- Quasi-Governmental Transportation  
and Port Authorities
- Real Estate Development
- Relocation Services, Corporate
- Risk Management
- Title/Escrow



## Research

Foundation contributions make it possible for CREW Network to remain the leading publisher of research on gender and diversity, equity, and inclusion in commercial real estate—research that is helping close the gender gap in the industry and marking progress through benchmark studies and annual research papers. This research directly supports CREW Network’s strategic initiatives and educational programming.

## Outreach

Commercial real estate offers rewarding and lucrative careers that are often overlooked because women are unaware of the opportunities that exist. CREW Network Foundation supports programs that educate women and girls about the career opportunities available to them, including:

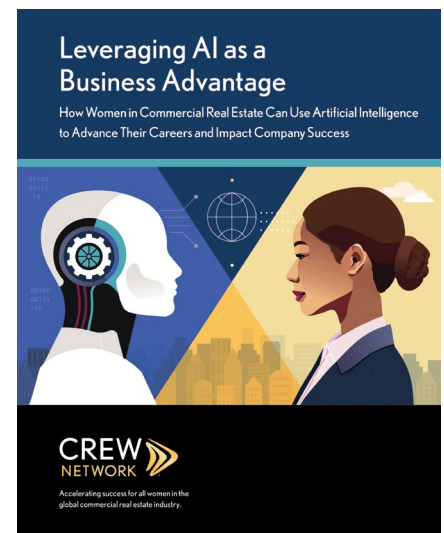
- **CREW Careers** is a hands-on program, designed to introduce middle and high school girls to the many career opportunities available to them within the commercial real estate industry.
- **UCREW** introduces college students to opportunities within the commercial real estate industry. Members of CREW Network’s chapters serve as role models to teach students networking fundamentals, offer powerful career resources, and provide relationship-building career development opportunities.
- **The CREW Network Mentoring Modules** provide a rich tapestry of principles organized in an easy-to-understand format. The success stories of our members often include descriptions of wise mentors, both male and female, who have made efforts to help

grow careers through unofficial mentoring relationships. No group is better suited to mentor women in commercial real estate than CREW Network.

## Greatest Needs Fund

Contributions to the Greatest Needs Fund are first used to cover the basic administrative costs of operations. Remaining funds are evaluated annually by the CREW Network Foundation board and are often used to provide additional funding to scholarships, industry research, career outreach or are set aside as reserves to cover potential future needs.

*In the following pages, we highlight some of the many ways we are building opportunities for women and girls in commercial real estate.*



In 2024, more than  
**2,300 girls**  
participated in a  
CREW Careers  
program, the most  
to date.



In 2024, UCREW  
reached over  
**2,200**  
college  
students,  
the most in  
program history.





# 2024 Campaigns Boost Member Giving

CREW Network Foundation held three successful fundraising campaigns in 2024 to boost individual giving opportunities and encourage members to pay it forward and support fellow members. The Rise Up campaign, Member May, and Giving Tuesday raised more than \$131,000 with over 1,000 donors participating.

In January, CREW Network Foundation launched the Rise Up campaign, which surpassed its goal of \$50,000 and raised \$63,604. The Member May campaign raised a total of \$27,886 and was a catalyst for many CREW chapters to achieve the Chapter Challenge “trifecta” by mid-year. The Chapter Challenge increases awareness of the Foundation’s powerful reach and raises funds for scholarships, industry research and career outreach. The Foundation also offered a weeklong campaign around Giving Tuesday for the first time, raising \$34,807, which also helped chapters get a jump on the giving year, which begins on November 1st.



**Kudos to these CREW Network chapters!** The three components or trifecta of the Chapter Challenge are gifts from 50% of a chapter’s membership, 100% of the chapter board, and a chapter donation of at least \$1,000 USD. At the end of the giving year, 60 chapters achieved all three components of the Foundation Chapter Challenge.





# 2024 Chapter Champions

These dedicated leaders promote CREW Network Foundation fundraising efforts by inspiring chapter members and board leadership to support the foundation through individual donations and special chapter events.

**Josephine Aberle**  
CREW CT

**Nicole Allard**  
Wisconsin CREW

**Shirley Anderson**  
CREW New Mexico

**Denise Armstrong**  
CREW Greater Akron

**Teri Askew**  
CREW Las Vegas

**Natalie Barnes**  
New Orleans CREW

**Carla Barney**  
CREW Calgary

**Dawn Beck**  
CREW New Mexico

**Christine Beck**  
CREW-St. Louis

**Sanaa Benzakour**  
CREW Montreal

**Kristin Blackman**  
CREW Iowa

**Stacey Boston**  
CREW Greater Philadelphia

**Lindsey Brist**  
AZCREW

**Emily Butler**  
CREW Miami

**Katrina Cadalbert**  
MNCREW

**Kimberly Cameron**  
PT CREW North Carolina

**Chelsea Carroll**  
CREW Richmond

**Crystal Chappell**  
Birmingham CREW

**Shanna Cole**  
CREW Orlando

**Lori Coleman**  
CREW San Francisco

**Sherri Commander**  
CREW Charlotte

**Dianne Crocker**  
CREW Boston

**Romona Davis**  
CREW Cleveland

**Michelle Decarlo**  
CREW New York

**Julie Dixon**  
Cape Fear CREW

**Pam Donaldson**  
CREW Austin

**Jennifer Dorgan**  
CREW Inland Empire

**Julia Evinger**  
IndyCREW

**Marcy Fleming**  
CREW Hawaii

**Mckenzie Followell  
Lotz**  
CREW Houston

**Dainan Gibson**  
CREW Coastal Virginia

**Kayla Gifford**  
CREW Columbus

**Kathy Gigac**  
Triangle CREW

**Laura Gilliland**  
CREW San Antonio

**Angela Gillot**  
CREW Pittsburgh

**Lauren Greene**  
CREW Midlands South Carolina

**Pauline Hale**  
CREW Orange County

**Lindsey Halter**  
CREW Charleston, Inc.

**Liza Hart**  
CREW Utah

**Breanne Hay**  
CREW Nova Scotia

**Sarah Hazani**  
CREW-LA

**Megan Holland**  
CREW Iowa

**Moira Holland**  
CREW Kansas City

**Shannon Huffer**  
CREW Louisville

**Kevin Hunt**  
CREW Ft. Lauderdale/Boca Raton

**Martaleah Jackson**  
CREW Sacramento

**Janna Jones**  
CREW Detroit

**Kelly Jones**  
CREW Maryland Suburban

**Tanya Jones**  
CREW Upstate South Carolina

**Stacey Juran**  
CREW Northern Virginia

**Maj-Lene Keech**  
CREW Northern Virginia

**Eloise Klein**  
CREW Baltimore

**Marlene Knight**  
CREW Omaha

**Jayne Kosal**  
CREW West Michigan

**Gina Lee**  
CREW Atlanta

**Christina Lewis**  
CREW DC

**Tina Lu**  
CREW Vancouver

**Kimberly Maber**  
CREW Sask

**Caitlin McCann**  
CREW Portland

**Beth McDonald**  
CREW Denver

**Jen McDonald**  
CREW Tampa Bay

**Kelly Michajlenko**  
CREW San Diego

**Christina Miles**  
CREW Idaho

**Linda Miller**  
CREW Silicon Valley

**Barbara Monahan**  
CREW Naples/Fort Myers

**Lexi Moriarty**  
CREW-LA

**Lori Parker**  
CREW Nashville

**Sue Paton**  
CREW Calgary

**Jean Phillips**  
CREW Palm Beach/Treasure Coast

**Linda Plesic**  
CREW Greater Philadelphia

**Abby Reichling**  
Wisconsin CREW

**Laraine Saldivar**  
CREW Denver

**Cindy Santilena**  
CREW Northern Nevada

**Christie Sbarra**  
CREW Denver

**Jennifer Scher**  
CREW Tampa Bay

**Amy Schroeder**  
CREW Seattle

**Carrie Sermersheim**  
IndyCREW

**Victoria Serr**  
East Bay CREW

**Maria Sosa**  
CREW Lehigh Valley

**Taylor Starr**  
CREW-OKC

**Abbey Steger**  
CREW Northern Colorado

**Karen Sweet**  
Toronto CREW

**Sara Terry**  
CREW Dallas

**Jessica Trifiro**  
CREW NJ

**Cassie Walkers**  
CREW Fort Worth

**Virginia Weida**  
CREW Pittsburgh

**Lindsay Welch**  
CREW Tucson

**Melissa Wilhelm**  
CREW Greater Cincinnati

**Olivia Wirth**  
CREW Chicago

**Robyn Wosnack**  
Edmonton CREW



2024 CREW Network Foundation scholars at the Convention in Vancouver, British Columbia.

## SCHOLARSHIP PROGRAM

# Impacting Lives

Since 2009, CREW Network and CREW Network Foundation have awarded scholarships to 296 women totaling \$1.7 million USD. The CREW Network Foundation Scholarship program is supported by a permanent endowment, as well as contributions to the current annual scholarship fund. The scholarship, which is designed to encourage women to pursue an education that will lead to a career in the commercial real estate industry, is awarded on the basis of academic excellence.

In 2024, CREW Network Foundation granted 40 scholarships:—25 \$5,000 awards for undergraduate students and 15 \$10,000 awards for graduate students for tuition and books. Scholarship recipients also received a 24-month CREW Network student membership; complimentary registration to the 2024 CREW Network Convention; a \$1,000 travel stipend to attend the Convention; and a six-month mentoring opportunity with a CREW Visionary.

Over the past  
15 years, CREW  
Network Foundation  
has provided:

**\$1.7 million** USD

awarded to **296** women in

**39** states/provinces and

**131** universities





# 2024 CREW Network Foundation Scholars



## Hoori Barkh, CPA

**Hometown:**  
Vancouver, British Columbia

**University and focus of study:**  
Graduate

Yale University  
Business Administration

Barkh is entering the second and final year of her Master of Business Administration at Yale School of Management (SOM). Prior to SOM, she worked as a Sr. Financial Analyst at the University of British Columbia where the challenges of securing research space sparked her interest in commercial real estate. Barkh intends to take elective courses in real estate in the upcoming year to deepen her understanding of the field, with the goal of pivoting into a finance-based role in CRE.



## Celina Bazzi

**Hometown:**  
Dearborn Heights, Michigan

**University and focus of study:**  
Undergraduate  
University of Michigan, Stephen M. Ross School of Business

Business Administration, concentrating in Finance and Real Estate

Bazzi is a rising senior pursuing a Bachelor's in Business Administration and minoring in Real Estate Development.

She serves as Managing Director of Asset Management for the Ross Real Estate Fund, Co-founder and President of the Michigan Women in Real Estate Club, and a Ross BBA Student Ambassador. Bazzi has interned in New York at Blackstone's Real Estate Asset Management group, and at Crestlight Capital, a Detroit-based Real Estate Private Equity firm. She aspires to work in real estate development within the affordable housing sector.



## Emma Beadle

**Hometown:**  
Ocoee, Florida

**University and focus of study:**  
Undergraduate  
University of Florida  
Construction Management

Beadle is a junior majoring in construction management. She is actively involved in multiple clubs including ABC, NAWIC, and GSP along with serving on the sisterhood committee within her sorority, Phi Mu. She has also competed in her school's NAHB competition, placing fourth in the nation. Beadle has interned the past two summers for Clancy and Theys Construction and Balfour Beatty Construction. She aspires to work in the construction industry upon graduation.



## Maggie Carathers

**Hometown:**  
Canyon, Texas

**University and focus of study:**  
Undergraduate  
Oklahoma State University  
Architecture and Architectural Engineering

Carathers is a senior majoring in architecture and architectural engineering with a minor in architecture and entrepreneurship. She served for two years as the NCARB liaison for the American Institute of Architecture Students at OSU as well as volunteering in LifeKids, working as a teaching assistant, and as a library assistant.

Carathers interned in the DFW Metroplex at LA Fuess Partners and in Tulsa at Cyntergy. Upon graduation, she plan to pursue structural engineering.



## Katie Carlton

**Hometown:**  
Rome, Georgia

**University and focus of study:**  
Undergraduate  
Samford University  
Marketing

Carlton is a senior majoring in marketing with concentrations in real estate and professional sales. She is in the first class of the newly founded real estate concentration at Samford University and was the student speaker for the real estate lab grand opening. She has served on the internal recruitment committee for her sorority, Phi Mu. Carlton currently holds real estate licenses in Georgia and Alabama and is pursuing her Alabama broker's license. Carlton has interned at Hydinger Stewart & Chew Commercial Properties in Birmingham, Alabama and aspires to work in brokerage upon graduation.





### **Dagny Carlsson**

**Hometown:**  
Houston, Texas

**University and  
focus of study:**

Graduate

University of Pennsylvania  
Architecture and  
Landscape Architecture

---

Carlsson is a rising second-year master's candidate at the University of Pennsylvania Weitzman School of Design. She is currently pursuing degrees in Architecture (MArch) and Landscape Architecture (MLA) and holds an undergraduate degree in Architectural Design from Stanford University. Carlsson is currently a Design Fellow with Penn Praxis and has previously worked as Architectural Coordinator for SITIO and Kirksey Architecture. She aspires to pursue licensure as an architect after graduating and residential community developer.



### **Sarah Carpenter**

**Hometown:**  
Wolfeboro,  
New Hampshire

**University and  
focus of study:**  
Undergraduate

Wentworth Institute  
of Technology  
Architecture

---

Carpenter is a junior majoring in Architecture with a concentration in Adaptive Intervention and a minor in Business Analytics. At school, she participates in SPEC mentorship, embedded tutor programs, and various clubs. She has held three internships at firms in New Hampshire and Maine, where she has worked on various projects including senior living, prefab residential, landscape architecture, and high-end coastal residential. Inspired by the impact of trauma-informed design within a built environment, she is determined to create inclusive and supportive spaces that promote healing and restoration.



### **Faith Cerny**

**Hometown:**  
Washington, DC

**University and  
focus of study:**

Graduate

Massachusetts Institute of  
Technology  
Real Estate Development  
and City Planning

---

Cerny is a graduate student pursuing a dual MSRED and MCP degree at MIT. She earned a BS in Architecture from the University of Virginia and has 10 years of experience working in the building industry. Her practice includes management of sustainable commercial office building and healthcare construction projects throughout greater Washington, DC with Skanska; residential design with GTM Architects; restoration of NYC public housing following Hurricane Sandy with Jacobs; and construction of affordable homes as an AmeriCorps service member with New Orleans Area Habitat for Humanity. Cerny aspires to develop resilient, climate-responsive real estate projects that add high, long-term value to communities.



### **Ranida Nait Challal**

**Hometown:**  
Berkeley, California

**University and  
focus of study:**

Undergraduate

University of  
California Berkeley  
Business Administration

---

Nait Challal is a rising senior at the University of California, Berkeley, Haas School of Business. She discovered a passion for commercial real estate as a freshman in college when she completed an internship in brokerage. This passion was sparked by her appreciation of the multidisciplinary nature of the industry and the significant impact one can make on both microeconomic and macroeconomic levels. She dedicates her time to growing her network and connecting with industry leaders through her involvement in the Urban Land Institute's Young Leaders Group, CREW, Project Destined, and her university's real estate club, UREC.



### **Kaavya Chhatrapati**

**Hometown:**  
Fremont, California

**University and  
focus of study:**

Graduate

University of California,  
Berkeley  
Real Estate Development  
and Design

---

Chhatrapati is a master's student majoring in Real Estate Development and Design at UC Berkeley. She is currently involved in extensive research on equitable housing and socio-economically diverse communities. She has previously worked as a Development Manager in both Austin and the Dallas, Texas areas, where she successfully managed projects from acquisition through construction, championing sustainable initiatives and affordable financing strategies. Chhatrapati is deeply committed to addressing the housing crisis in the Bay Area and aspires to work in affordable housing development.



### **Sophie Da Silva**

**Hometown:**  
Toronto, Ontario

**University and  
focus of study:**

Undergraduate  
Richard Ivey Business  
School at Western  
University  
Finance

Da Silva is a dual degree candidate at the Richard Ivey Business School, pursuing an Honours Business Administration and Honours Specialization in Philosophy. She serves as President of the Ivey Real Estate Club, Board Member for the Ontario Real Estate Clubs Association, and Vice President of Advocacy for Ivey's chapter of Active Minds, an international Mental Health organization. Da Silva has interned in commercial real estate lending at the National Bank of Canada and QuadReal Property Group on the Canadian Debt Investments team. She aspires to work in real estate private equity upon graduation in spring 2026.



### **Claire Ching**

**Hometown:**  
Seattle, Washington

**University and  
focus of study:**

Undergraduate  
University of California,  
Berkeley  
Architecture and  
Economics

Ching is a junior double majoring in architecture and economics at the University of California, Berkeley. She has previously served on the executive board of the Undergraduate Real Estate Club and is heavily involved in other business and volunteer organizations on campus. Ching interned as a corporate real estate intern under Albertsons Companies and since freshman year, has conducted research for real estate law at Berkeley's Law School. Next year, she will intern under KKR's real estate credit team in New York.



### **Jordyn Dellis**

**Hometown:**  
Waukesha, Wisconsin

**University and  
focus of study:**

Undergraduate  
University of Wisconsin-  
Madison  
Real Estate,  
Management

Dellis is a senior majoring in real estate, management and earning a certificate in consulting from the University of Wisconsin-Madison. She is actively involved in her community and has interned for two summers at Smart Asset Realty along with Northwestern Mutual Real Estate. Dellis aspires to continue to work in the commercial real estate industry upon graduation.



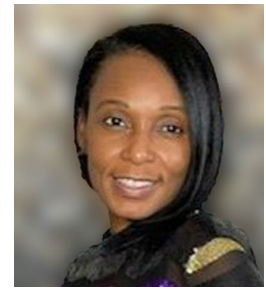
### **Manuela Fonseca**

**Hometown:**  
Orlando, Florida

**University and  
focus of study:**

Undergraduate  
University of Central  
Florida  
Finance & Real Estate

Fonseca is a Junior student majoring in Finance and Real Estate with a minor in Professional Selling Program. She is a licensed agent in Florida, serves as the Vice President of Communications at the Real Estate Society at UCF, is an active member at CREW Orlando and ICSC, and has gained various certifications through Project Destined. Fonseca has interned at Pulte Homes in the Land Acquisition department and is currently working at CBRE as a brokerage intern for the industrial team. She aspires to work in Investment Sales or Commercial Real Estate brokerage upon graduation.



### **Geanna Franqui**

**Hometown:**  
Baltimore, Maryland

**University and  
focus of study:**

Graduate  
Georgetown University  
Real Estate Development

Franqui is in her final year of completing her masters' degree with a major in real estate development. She is an active member of the emerging leader's forum for the NHP Foundation, which includes collaboration with senior and junior leadership to discuss corporate culture initiatives and social activities. Franqui is also an active member of the racial social injustice (RSI) group within the NHP Foundation which focuses on diversity and inclusion efforts, mentorship and teaching initiatives with internal staff, resident students and college interns.



### **Graci Gohr**

**Hometown:**  
Anchorage, Alaska

**University and  
focus of study:**  
Undergraduate  
San Diego State  
University  
Finance

Gohr is a junior majoring in Finance and double minoring in Entrepreneurship and Interdisciplinary Studies. She serves as Auditor on the Executive Board for SDSU Women in Business. In addition, she is a member of the Finance and Investment Club, Entrepreneurship Society, and Pi Beta Phi sorority. Gohr was a Girls Who Invest scholar and received an internship placement in New York where she worked at Morgan Stanley. She aims to work in CRE upon graduation and is grateful for the support system of CREW to help her achieve this.



### **Wendy Guan**

**Hometown:**  
San Francisco, California

**University and  
focus of study:**  
Graduate  
Northwestern University,  
Kellogg School of  
Management  
Real Estate Finance

Guan is entering a two-year MBA program at Kellogg, with an emphasis on real estate finance. Prior to her MBA, she was the Senior Business Development Associate at TMC Financing, a mission-based lending company providing financing solutions to small business owners looking to purchase commercial real estate. Guan is an active member of CREW SF, holding leadership positions within the Rising Leaders Committee and running the flagship mentorship program for multiple years. She plans to pursue a career in real estate consulting after graduation.



### **Haley Hanks**

**Hometown:**  
Wilmington,  
North Carolina

**University and  
focus of study:**  
Undergraduate  
University of North  
Carolina, Chapel Hill  
Business Administration,  
Emphasis in Real Estate  
Finance

Hanks is a senior majoring in Business Administration with an Area of Emphasis in Real Estate Finance. She serves as an upperclassman mentor of UNC's Undergraduate Real Estate Club, ambassador of the Kenan-Flagler Business School's R.E.D.I. (Real Estate Diversity Initiative) Program, and has held various leadership positions in her sorority, Alpha Delta Pi. Hanks has interned at Greystar Real Estate Partners, headquartered in Charleston, South Carolina, in development finance and operations roles and aspires to work in development upon graduation in May 2025.

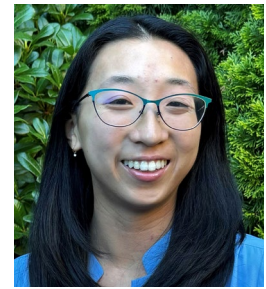


### **Katherine Harland**

**Hometown:**  
Jacksonville, Florida

**University and  
focus of study:**  
Graduate  
Rice University  
Architecture

Harland is a first-year graduate student pursuing a Master of Architecture at Rice University. She recently graduated Summa Cum Laude from Clemson University with a Bachelor of Arts in Architecture and a double minor in Mathematical Sciences and Music. At Clemson, Harland served as president of Habitat for Humanity for two years and received numerous awards for design in the Clemson School of Architecture. Harland works for Equip Studio as a Junior Designer and aspires to pursue professional architecture licensure upon completing her degree.



### **Catherine Huang**

**Hometown:**  
Redmond, Washington

**University and  
focus of study:**  
Undergraduate  
University of Washington,  
Seattle  
Real Estate and English

Huang is a rising senior pursuing a BS in Real Estate, a BA in English, and a minor in Classical Studies. She plays for UW's women's ultimate frisbee club, one of the top teams at the Division I level, and serves on the team's finance and fundraising committee. She also writes for Off Leash, a satirical magazine for and by UW students. Huang is interning at Washington Capital Management in Seattle and aspires to work in real estate investment upon graduation.





### **Stephanie Koziol**

**Hometown:**  
Coeur d'Alene, Idaho

**University and focus of study:**  
Graduate  
Cornell University  
Real Estate

Koziol is a second-year Master of Real Estate candidate at Cornell University where she is concentrating in Development and Sustainability and president of the Association of Cornell Women in Real Estate. Prior to Cornell, she received an undergraduate degree from the University of Idaho in Management and Information Systems and worked across the public and private sectors of the built environment. Koziol is passionate about exploring the potential of emerging technologies and practices in shaping sustainable and equitable cities. Upon graduation, she aspires to work in commercial real estate development.



### **Maggie Kroening**

**Hometown:**  
Charlotte, North Carolina

**University and focus of study:**  
Graduate  
Harvard University  
Architecture

Kroening is a first-year graduate student in the Master of Architecture II program at Harvard University Graduate School of Design. She graduated Summa Cum Laude from North Carolina State University with a Bachelor of Architecture degree and a minor in Landscape Architecture. Kroening has been recognized for design work through the Association of Collegiate Schools of Architecture and the American Institute of Landscape Architects. She has worked as a Research Assistant at the Coastal Dynamics Design Lab and as a Teaching Assistant for the first-year architecture studio at NC State. She has interned at Sasaki in Boston and aspires to uplift an understanding of interdisciplinary design in architecture and commercial real estate.



### **Nikhila Kurri**

**Hometown:**  
Dallas, Texas

**University and focus of study:**  
Undergraduate  
The University of Texas, Austin  
Finance

Kurri is a senior majoring in Finance with a minor in Management Information Systems. She serves as Vice President of Professional Development at the Undergraduate Real Estate Society, KS WELI Student Council, and the Business Lead for Keep My Receipt. Nikhila has interned in Brokerage at Worldwide Commercial, Real Estate Private Equity at Affinius Capital, and CRE Corporate Investment Banking at Wells Fargo. She aspires to work in commercial real estate banking upon graduation.

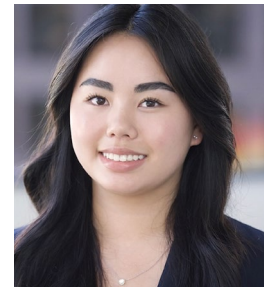


### **Kinga Lewandowska**

**Hometown:**  
Gdansk, Poland (originally); Middletown, New York (currently)

**University and focus of study:**  
Undergraduate  
Northeastern University  
Civil Engineering

Lewandowska is a senior majoring in Civil Engineering with a concentration in Structural Engineering and a minor in Architectural Design. She is the Director of Retail of Northeastern's Real Estate market Roundup Club, as well as Networking Chair for the university's chapter of ASCE, and the program coordinator of the civil engineering honor society, Chi Epsilon. Lewandowska has completed three co-ops in her time at Northeastern, including construction management at Haycon, Land Development at VHB, and Asset Resilience and Development at AEW. She hopes to work for a developer bringing mixed-use developments to life.



### **Vivian Ma**

**Hometown:**  
San Francisco, California

**University and focus of study:**  
Undergraduate  
University of California, Los Angeles  
Sociology & Urban Planning

Ma is entering her junior year, pursuing a degree in Sociology with a minor in Urban Planning. Throughout her academic journey, she has actively taken on leadership roles, including serving as VP of Community Development at UCI's Real Estate Association before transferring to her current university. She is a scholar with Presidio Bay Ventures, focusing on learning the intricacies of real estate development. Looking ahead, she hopes to continue exploring opportunities in commercial real estate while furthering her interests in development and construction.



### Erica Miller

**Hometown:**  
Elkins Park, Pennsylvania

**University and focus of study:**  
Undergraduate  
Drexel University  
Construction Management

Miller is a senior majoring in Construction Management with a minor in Real Estate Management and Development & Business Administration.

She serves as President of the Drexel University Construction Association, an inducted member of Sigma Lambda Chi, and a student ambassador for Drexel University. Miller has interned at The Norwood Company, a construction management firm, and has previously worked as a project engineer for a consulting firm. She aspires to work as a project manager in commercial construction upon graduation.



### Elizabeth Mondo

**Hometown:**  
Chicago, Illinois

**University and focus of study:**  
Graduate  
University of Denver  
Real Estate and the Built Environment

Mondo is a former Army critical care flight nurse who made a career pivot at age 42. She recently teamed with DU classmates to develop a plan for a modern housing community, which won first place at the National Association of Home Builders' graduate student competition. Mondo is an intern with Swinerton Construction and plans to shift to working with their development group. She aims to establish a full-service design build firm focused on sustainable practices, creating opportunities for women and veterans, and promote resource sharing within communities.



### Alyssa Nolan

**Hometown:**  
Cypress, Texas

**University and focus of study:**  
Undergraduate  
Catholic University of America  
Architecture

Nolan is pursuing her degree in Architecture under the NCARB Integrated Path Towards Architecture Licensure (IPAL) program which accelerates the process of obtaining an architecture license to six years. She has completed internships with Curtis and Windham Architects in Houston, Texas, and MW Architects, in Herndon, Virginia. Nolan is working at the Crough School of Architecture and Planning as a summer Woodshop Lab Technician, learning basic construction skills while working on a design-build library. Upon graduation, she aspires to continue exploring architecture and real estate opportunities by obtaining her master's degree and starting her own residential practice upon licensure.



### Tulsi Patel

**Hometown:**  
Tulsa, Oklahoma

**University and focus of study:**  
Undergraduate  
University of Tulsa  
Accounting, Finance, and Real Estate

Patel is a junior double majoring in finance and accounting with a minor in real estate. She serves as Social Media Officer of the TU Real Estate Student Club, a member of the Student Finance Association, Director of Student Association Coordinator for the TU Business Society, and a member of Phi Eta Sigma and Mortar Board. Patel has internship experience in the accounting industry and is keen to expand her knowledge and gain valuable skills in finance and commercial real estate.



### Brooke Ratliff

**Hometown:**  
Fishers, Indiana

**University and focus of study:**  
Undergraduate  
Purdue University  
Finance

Ratliff is a rising senior majoring in finance with minors in real estate finance and Spanish. She has recently returned from a semester abroad in Barcelona, which significantly enhanced her intercultural competency and contributed to her professional growth. With two prior internships in real estate investments, including her recent role with the acquisitions and underwriting team at Last Mile Investments in Cincinnati, Ratliff is aspiring to work as an investment analyst after graduation and navigate global markets in her career.



## Alexandra Richo

**Hometown:**  
Stratford, Connecticut

**University and focus of study:**  
Undergraduate  
University of Connecticut  
Real Estate and Urban Economics

Richo is a rising senior majoring in real estate and finance. She is currently a student leader and Chief of Staff for the new UConn Real Estate Fund. She served as President of the Real Estate Society her junior year and was selected to participate in the Cornell Real Estate Case Competition in New York. Richo currently interns at Cigna in their real estate group and hopes to pursue commercial real estate investments full time post-graduation.



## Madison Roberts

**Hometown:**  
Brooklyn, New York

**University and focus of study:**  
Undergraduate  
Babson College  
Real Estate and Finance

Roberts is a rising senior at Babson College majoring in Business Administration and concentrating in both Finance and Real Estate. She has served as both the Co-President and Vice President of Marketing for the Babson Real Estate Club, is an ongoing resident assistant for first year students, and participates in the arts at Babson as a part of The Empty Space Theater group. Roberts has been exposed to real estate through the SEO and Project Destined programs and has spent her summers interning at Artemis Real Estate Partners, Principal Real Estate Investors, and Ares Management. Post graduation, Roberts is determined to stay within the real estate space and hopes to pursue a role in development.



## Jennifer Seaver

**Hometown:**  
Raleigh, North Carolina

**University and focus of study:**  
Graduate  
North Carolina State University  
Architecture and Environmental Planning

Seaver is a passionate aspiring landscape architect and environmental planner pursuing her master's degree. She is the Founder and Executive Director of Art for All - NC, where she champions accessible arts education and experience, fostering inclusivity and environmental awareness. Additionally, Seaver works in an administrative role at the NC Department of Environmental Quality's Division of Water Resources, Water Chemistry Lab. Upon completion of her Master's, she aims to revitalize environmentally compromised commercial spaces into vibrant cultural hubs accessible to all, with a particular focus on incorporating climate-resilient design features.

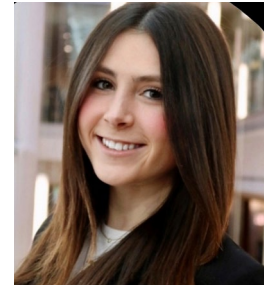


## Sophia Shaheen

**Hometown:**  
Reno, Nevada

**University and focus of study:**  
Graduate  
University of Southern California  
Real Estate Development

Shaneen is a Master of Real Estate Development candidate at USC and a member of CREW-LA. She began her career as a property manager at Regency Centers, where she oversaw a portfolio of shopping centers with a combined asset value exceeding \$375 million USD, housing over 200 retail tenants. For nearly a year, she served as the tenant construction manager for her portfolio, managing large TI projects as the landlord point person. In 2023, she joined the leasing department, where she managed new lease negotiations and renewals for nearly 850 retail units.



## Lara Shein

**Hometown:**  
Baltimore, Maryland

**University and focus of study:**  
Undergraduate  
University of Michigan, Stephen M. Ross School of Business  
Business Administration/Real Estate

Shein is a junior pursuing a bachelor's in business administration and minoring in real estate development. She serves as Vice President of Asset Management for the Ross Real Estate Fund, Co-Founder and Vice President of Professional Development for the Women In Real Estate Club, and a Panhellenic Peer Educator for the University of Michigan. Shein has interned in New York City for Vornado Realty Trust and for Blackstone in their Real Estate group. She aspires to work in real estate private equity upon graduation.





### **Nikki Tran**

**Hometown:**  
San Diego, California

**University and  
focus of study:**  
Undergraduate  
Claremont McKenna  
College  
Economics and  
Philosophy

---

Tran is a junior majoring in Economics and Philosophy. On campus, she serves as Vice President of Finance for Claremont Women in Business, President of the Asian Pacific American Student Association, and a Handley Leadership Fellow for the Kravis Leadership Institute. Additionally, she works as a Career Mentor for Claremont McKenna College's Career Services Center. Tran has interned in Real Estate Private Equity at CIRE Equity in San Diego and Montana Avenue Capital Partners in Los Angeles, and is currently working in the finance department at Apple. She aspires to work in acquisitions or asset management after graduation.



### **Natalie Washington**

**Hometown:**  
Washington, DC

**University and  
focus of study:**  
Graduate  
University of Maryland  
College Park  
Real Estate Development  
(MRED) / Business  
Administration (MBA)

---

Washington is a dual degree graduate student at the University of Maryland. She is pursuing a master's in real estate development (MRED) and Master of Business Administration (MBA). Washington graduated from Howard University with a business finance degree. She loves to use her operations, tech and management skills to help real estate professionals and entrepreneurs build their portfolios.

Washington has interned with NHP Foundation as a real estate analyst, and her long-term goal is to own and develop commercial real estate properties in the U.S. and abroad.



### **Kelsi Weilage**

**Hometown:**  
Murray, Nebraska

**University and  
focus of study:**  
Graduate  
University of Nebraska,  
Omaha  
Architectural Engineering

---

Weilage is a master's student majoring in architectural engineering, specializing in power and lighting systems. She is a member of the Illuminating Engineering Society (IES) and the Society of Women Engineers (SWE). She recently served as the President of the Nebraska Engineering Student Council at Omaha (NESCO) and as a student ambassador for the Engineering Ambassadors Network. Weilage has interned in Denver, Colorado at AE Design, a lighting, power, and technology firm. Upon graduation, she aspires to work in electrical engineering and lighting design for commercial buildings.



### **Sokaina (Suki) Zouak**

**Hometown:**  
Jersey City, New Jersey

**University and  
focus of study:**  
Undergraduate  
Rutgers Business School  
Real Estate and Finance

---

Zouak is a Senior at Rutgers Business School studying Finance and Real Estate at age 19. She began college at age 14 and completed her associate's degree in environmental engineering by 17. Zouak has served as Vice President of External Affairs at the Rutgers Real Estate Society. She is interning as an Owner's Representative in Construction Management at RXR, a real estate development company in New York.

After completing her undergraduate studies, Zouak plans to complete a JD/ master's in real estate development.



### **Deb Wroblewski**

**Hometown:**  
Arlington, Virginia

**University and  
focus of study:**  
Graduate  
George Washington  
University - Corcoran  
School of the Arts  
& Design  
Interior Architecture

---

Wroblewski is a graduate student pursuing her master's in interior architecture.

She was formerly Director of Investor Relations for a leading multifamily development firm in the Washington D.C. area, after starting her career in Finance and Investor Relations at a real estate investment trust. She has now returned to school to pursue commercial and residential interior design. Wroblewski earned a BA with distinction in Economics and Women, Gender, and Sexuality Studies from the University of Virginia.

# Scholarship Endowment

CREW Network and CREW Network Foundation established the Scholarship Endowment fund in 2008. Donations to this endowment fund support the long-term growth and impact of scholarships for female students in commercial real estate programs.

In 2020, the CREW Network Foundation Scholarship Endowment was renamed to honor CREW Network founder, first president and CEO Linda Hollemon. Following her retirement as CREW Network CEO in 2005, Linda remained a strong supporter of the Foundation and was inducted as a CREW Visionary in 2007. By naming the scholarship endowment in her honor, we recognize her legacy in perpetuity and acknowledge through future generations the fundamental impact of Linda's leadership.

As of December 31, 2024, the endowment fund totaled over \$2.8 million, with \$1.6 million designated by the board of directors and over \$1.3 million of donor-designated contributions.



## Scholarship Selection Committee

Founding chapters each hold one (1) seat on the Scholarship Selection Committee, which reviews and selects the scholars to be recommended to the CREW Network board. We also opened this committee up to members this year, who would apply and then get selected to be a part of this committee. Below is a list of chapters and members who served in 2024.

CREW Silicon Valley	Gloria Aguilar
CREW Greater Cincinnati	Jan Barnhorst
CREW New Mexico	DeeVonda Bates
CREW Sacramento	Megan Bullard
CREW Dallas	Tracey Bush
MNCREW	Katrina Cadalbert
IndyCREW	Rachele Cagle
Toronto CREW	Vanessa Colton
CREW Denver	Lauren Fry
CREW Seattle	Carrie Gartside Anthony
CREW Boston	Jocelyn Goglia
CREW-Las Vegas	Johana Gonzalez
CREW Atlanta	Anamaria Hazard
CREW Philadelphia	Janet Helms
IndyCREW	Kristin Hornberger
CREW Orange County	Terri Hovdestad
CREW Atlanta	Trina Joseph
CREW Richmond	Brenda Karp

CREW Leigh Valley	Jody King
CREW NJ	Krista Korinis
CREW Vancouver	Amy Lang
CREW Greenville	Zoe Lansbury
CREW Vancouver	Frances Levitt
CREW San Diego	Caitlin Little
CREW Charlotte	Nancy Olah
Edmonton CREW	Audrey Powell
CREW DC	Eizabeth Pye
CREW Houston	Theresa Quartaro
CREW Omaha	Cynnthia Ray
CREW New York	Rita Saheb
CREW Austin	Julianne Shively
Toronto CREW	Alicia Vera
Edmonton CREW	Robyn Wosnack
CREW Calgary	Ellen Yeung-Cheng



In 2022, CREW Network Foundation introduced a new opportunity exclusively for chapters to support the Foundation and receive year-round recognition for their generosity and dedication to our mission. Donations to this endowment fund support the long-term growth and impact of our scholarships.

From 2009 to 2020, 16 chapters and two individuals graciously helped build the endowment. They are recognized in perpetuity as our [Founders Row](#) in recognition for providing foundational funding to the scholarship endowment. These are the pioneers, leaders, and visionaries of our Foundation.

The Hall of Fame program encourages and recognizes chapters that support the endowment through pledged gifts, and advance our mission through career outreach and industry research programs. This opportunity is for all chapters—regardless of size or budget.

To be recognized in the new Hall of Fame, chapters may pledge support through any of these three levels. The commitment includes a chapter donation of \$5,000 to \$20,000 USD or the Canadian dollar equivalent and hosting a career outreach or industry research program annually. Pledges must be fulfilled within three years.

In 2024, two chapters committed to the A-List level: CREW Atlanta, and CREW Greater Cincinnati, each pledging \$20,000 to the endowment, and committing to a career outreach event annually in their chapter for three consecutive years. Three chapters—CREW Fort Worth, CREW Orlando, and CREW Tampa Bay, committed to the Benefactor Level, with a \$10,000 pledge. In addition, PTCREW pledged at the Mission Allies Level, with a \$5,000 pledge.

#### A LIST (\$20,000)



#### BENEFACTOR (\$10,000)



#### MISSION ALLIES (\$5,000)



## Corporate Champions

New in 2024, the CREW Network Foundation Corporate Champions program is an opportunity for companies to support CREW Network Foundation scholarships through a charitable, tax-deductible gift.

To be recognized as a Corporate Champion, companies must pledge a minimum of \$20,000 USD (or the CAD equivalent) to be fulfilled within three years of the commitment date. These corporate gifts fund scholarships for female university students pursuing careers in commercial real estate.

In 2024, CREW Network Foundation welcomed PNC Real Estate as its first Corporate Champion. Thank you!





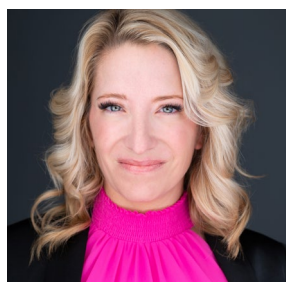


# CREW Visionaries Donor Program

The CREW Network Foundation Visionaries program was established in 2007 to recognize donors for their cumulative giving to CREW Network Foundation. Participation in the program acknowledges an individual's commitment to support CREW Network Foundation's mission. When individuals reach \$10,000 in cumulative lifetime giving\*, they are inducted into the Visionaries program. Each inductee is awarded an exclusive, numbered gold lapel pin or pendant. Each subsequent \$10,000 in cumulative lifetime giving is recognized with the addition of a diamond to the individual's pin or pendant.

## 2024 Visionary Inductees

We appreciate the leadership of our Visionaries and all they have done to advance women.



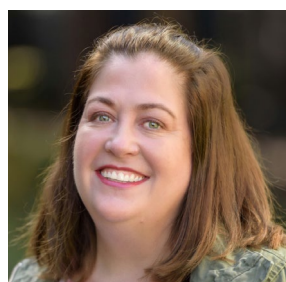
124<sup>TH</sup> INDUCTEE

**Cally Miltenberger**  
CREW Dallas



125<sup>TH</sup> INDUCTEE

**Patty Trepp Drummond**  
CREW Charlotte



126<sup>TH</sup> INDUCTEE

**Melissa Kroskie**  
CREW Seattle



127<sup>TH</sup> INDUCTEE

**Catherine Heath**  
CREW DC

## Individuals who received diamonds in 2024:

### Added First Diamond

- **Vicky Gunning**, CREW Dallas
- **Michele O'Connor**, CREW New York
- **Sue Paton**, CREW Calgary
- **Tara Piurko**, Toronto CREW
- **Barbi Reuter**, CREW Tucson

### Added Second Diamond

- **Kris Beason**, CREW Seattle
- **Barbara Champoux**, CREW New York
- **Christine Chipurnoi**, CREW New York
- **Nancy Olah**, CREW Charlotte

### Added Fourth Diamond

- **Sharon Herrin**, CREW Dallas

### Added Fifth Diamond

- **Vicki Summerall**, CREW Dallas and CREW Fort Worth

\* Cumulative Life Giving Eligibility - Click [here](#) for more detailed information

## CREW Visionary Mentorship Program

In 2022, CREW Network Foundation launched a six-month mentoring program for scholarship recipients to engage with CREW Visionaries who are also senior leaders in commercial real estate. The opportunity includes a complimentary CREW Network Convention registration and a \$1,000 travel stipend to attend the convention in the scholar's second year as a CREW student member. In 2024, 17 mentees and mentor participated in this program.

### MENTEES

Sarah Auer	Grace Donaldson	McKenzie Pearson
Kayla Baldwin	Yentell James	Madison Psinas
Isabella Bernard	Abrielle Jensen	Madison Ross
Annmarie Bonanno	Siena Mauvais	Emily Shih
Natalie Bongirno	Sarah McDowell	Mia Soto
Liz Dillard	Jessie Pan	

### MENTORS

Miriam Brodie	Coni Hennersdorf	Tara Piurko
Barbara Champoux	Marie McLucas	Karen Priesman
Christine Chipurnoi	Traci Miller	Claire Roberts
Kelli Dickerson	Nancy Olah	Tori Robinson
Tiffany English	Geri Pacheco	Lisa Strobe
Cheryl Hardt	Janice Paine	



## Thank you to our generous CREW Visionaries

Kim Addy ★★★	Kelli Dickerson	Julie Kriegel	Mary Ricks
Marianne Ajemian ★	Patty Trepp Drummond	Melissa Kroskie	Claire J. Roberts ★
Kathy Allgier ★	Angela E. Dugick	Beth Lambert-Saul ★★	Allison Robin
M. Maureen Anders ★★★	Stephanie Duncan	Anne DeVoe Lawler ★★	Tori Robinson ★
Linda S. Andreozzi	Tiffany English ★	Gillian Lawrence	Joan Rosoff
Gail S. Ayers ★	Collete English Dixon ★★	H.F. "Gerry" Lenfest	Glenn Rufrano
Laurie Baker ★	Tina A. Essegian	Judith D. Levine ★	Pam Scamardo
Adrienne Bain ★★	Mollie Fadule	Jennifer Litwak ★	Karin Schulz ★
Kris Beason ★★	Jeanette Flory-Sagan ★★★	Andrea Lukens	MaryBeth Shapiro
Alison Beddard ★	Calvin "Cal" Frese, Jr.	Cindy Malone ★★★★★	Jill Sharif
Julie Benezet	Roberta B. Fuhr	Wendy Mann ★★	Heather Skinner
Anne Benge ★	Mary Fuller	Marie McLucas	Tara Smiley
Shari Bjork	Debra Gilbreath	Jean M. Meilinger	Jane Snoddy Smith ★★★★★★
Brenda Bodian ★	Christine Gorham	Goldie Wolfe Miller	Kelley J. Smith
Gayle Bourdeau ★	Bonnie S. Gottlieb	Tracy Miller	Elizabeth E. Solender
Suzanne Brasuell	Vicky Gunning ★	Cally Miltenberger	Stephanie Sprenkle
Kathy Briscoe	Pauline Hale	Lindsay Mingee	Michele Stevens
Miriam Brodie	Cheryl Hardt ★★	Holy Neber	Malcolm Stewart ★★★
Regina Bruce ★★	Jodi Hartley	Judith Nitsch ★★	Lisa Strobe
Ginger Bryant ★★	Catherine Heath	Michele O'Connor ★	Vicki Summerall ★★★★★
B. Diane Butler ★★★★★	Conilee Hennersdorf ★★	Nancy Olah ★★	Sandra Taylor
Armin Cantini	Sharon Herrin ★★★★★	Lynny Osenbaugh ★★	Sara Terry ★
Jennifer Carey	Susan Hill	Talynn Otsuki	Leslie Teskey
Kathy Carr ★	Linda G. Hollemon	Geri Pacheco	Sara L. Todd
Barbara Champoux ★★	Irene L. Hosford ★	Janice Paine	Sally French Tyler ★★
Susana Chavez	Victoria L. Joly	Diana L. Parker ★	Margaret Van Meter
Christine Chipurnoi ★★	Brenda Karp	Sue Paton ★	Ann Waeger
Faith Hope Consolo	Cynthia Emerson Keefer ★	Tara Piurko ★	Gerry Ring Waltz
Kathleen Coxe	Nichole Kelley	Karen Priesman	Karen Whitt
Dottie Cunningham ★★★★★	Tammy Kelly	Allison Rabin	Valerie L. Wood
Alyssa Dangler	Lori E. Kilberg	Jennifer A. Redner	Cindy Wozny-Carl ★★
Lou Ann Dent	Julie A. Kimble	Barbi Reuter ★	

★ Denotes diamonds for each additional \$10,000 given to CREW Network Foundation



# CREW NETWORK FOUNDATION Annual Fundraiser

On September 19, 2024, CREW Network Foundation hosted its annual fundraiser at the Vancouver Aquarium in Vancouver, British Columbia, and it was an absolute success! It achieved a record high for tickets sold, underwriter support and total income. A total of \$207,000 USD was raised through the event. Thank you to our 55 generous event underwriters and all who purchased tickets.





# THANK YOU, UNDERWRITERS 2024

## Aqua Advocates \$10,000

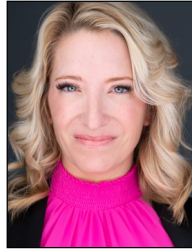


**Vicki Summerall**

## Starfish Supporters \$5,000



**Christine  
Chipurnoi**



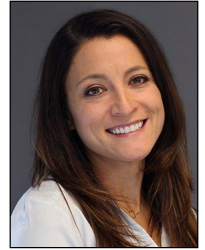
**Cally  
Miltenberger**



**Nancy Olah**



**Tara Piurko**



**CREW Chicago,  
in honor of  
Sue Myers**

## Cerulean Contributors \$2,500



**Adrienne Bain**



**Laurie Baker**



**Alison Beddard**



**Barbara  
Champoux**



**Alyssa Dangler**



**Patty Trepp  
Drummond**



**Tiffany English**



**Jeanette  
Flory-Sagan**



**Sharon Herrin**



**Brenda Karp**



**Gillian Lawrence**



**Cindy Malone**



**Sarah Mancuso**



**Wendy Mann**



**Holly Neber**



**Camille Renshaw**



**Barbi Reuter**



**Claire Roberts**



**Sara Terry**



**Karen Whitt**



**Cindy Wozny-Carl**

## Mermaid Members \$1,000

Kim Addy  
 Kris Beason  
 Gayle Bourdeau  
 Jennifer Chambers  
 CREW Seattle  
 Elena Cutshall  
 Kelli Dickerson  
 Lynn Goessling  
 Christine Gorham  
 Vicky Gunning  
 Cheryl Hardt  
 Stacey Kamps  
 Monica Luera  
 Megan McGinnis  
 Marie McLucas  
 Lindsay Mingee  
 Judith Nitsch  
 Michele O'Connor  
 Barbara Oddo  
 Allison Robin  
 Tori Robinson  
 Heather Skinner  
 Stephanie Sprenkle  
 Leslie Teskey  
 Tracy Treger  
 Marsha Womack



# 2024 CREW Network Foundation Organization Donors

## PLATINUM SUPPORTERS | \$15,000+

Birmingham CREW	CREW Chicago	CREW Dallas	CREW DC
CREW Greater Cincinnati	CREW Greater Philadelphia	CREW Houston	

## GOLD SUPPORTERS | \$10,000 – \$14,999

CREW Miami	CREW San Francisco	CREW Seattle	CREW Tampa Bay
------------	--------------------	--------------	----------------

## SILVER SUPPORTERS | \$5,000 – \$9,999

CREW Atlanta	CREW Baltimore	CREW Charlotte	CREW Denver
CREW Detroit	CREW East Bay	CREW Fort Worth	CREW New Mexico
CREW Omaha	CREW San Diego	PNC Real Estate	PT CREW

## BRONZE SUPPORTERS | \$2,500 – \$4,999

BGO	CREW Coastal Virginia	CREW Iowa	CREW Jacksonville
CREW Kansas City	CREW Orlando	CREW Sacramento	CREW-St. Louis
James P. Raymond Jr. Foundation		Womble Bond Dickinson LLP	

## COPPER SUPPORTERS | \$1,000 – \$2,499

CBRE	CREW Northern Nevada	CREW Sarasota/Manatee	Microsoft
CREW Austin	CREW Northern Virginia	CREW Silicon Valley	New Orleans CREW
CREW Boston	CREW Northwest Arkansas	CREW Tucson	The Perkins Coie Foundation
CREW Cleveland	CREW Orange County	CREW West Michigan	Trademark Property Company
CREW Columbus	CREW Pittsburgh	CREW-Las Vegas	Triangle CREW
CREW CT	CREW Portland	CREW-OKC	Wells Fargo Bank
CREW Fort Lauderdale/ Boca Raton	CREW Richmond	McKesson Corp.	Wisconsin CREW
CREW Greater Akron			
CREW Inland Empire			
CREW Lehigh Valley			
CREW Los Angeles			
CREW Mexico City			
CREW Midlands South Carolina			
CREW Montreal			
CREW Naples/Fort Myers			
CREW Nashville			
CREW NJ			
CREW Northern Colorado			



Participants at a UCREW event hosted by CREW Charlotte

The donors listed in the 2024 CREW Network Foundation Annual Report are individuals and organizations whose \$100+ contributions to CREW Network Foundation were received in the calendar year. This list, however, is not inclusive of the generous support received by CREW Network Foundation from members and chapters through chapter fundraising events including, but not limited to, auctions/raffle item donations or purchases. If there are questions or concerns about the accuracy of this report, please submit your inquiries to CREW Network Foundation.

# Individual Donors

## POWER CONTRIBUTOR | \$2,500+

Adrienne Bain  
Laurie Baker  
Kris Beason  
Alison Beddard  
Gayle Bourdeau  
Andria Burke  
Daniel Caesar  
Daniel Caesar  
Marcia Camarda  
Cindy Wozny-Carl  
Barbara Champoux  
Christine Chipurnoi  
Krista Costa  
Alyssa Dangler

Patty Trepp Drummond  
Tiffany English  
Samantha Fonda  
Catherine Heath  
Sharon Herrin  
Michelle Hudson  
Elizabeth Judd  
Stacey Kamps  
Brenda Karp  
Mla Khalifa  
Julie Kriegel  
Melissa Kroskie  
Gillian Lawrence  
Cindy Malone

Sarah Mancuso  
Wendy Mann  
Kassandra McLaughlin  
Traci Miller  
Cally Miltenberger  
Sue Myers  
Holly Neber  
Nancy Olah  
Sue Paton  
Sye Phnkaeng  
Tara Piurko  
Anne Raymond  
Camille Renshaw  
Barbi Reuter

Claire Roberts  
Allison Robin  
Glenn Rufrano  
Jeanette Flory-Sagan  
Jill Sharif  
Heather Skinner  
Michele Stevens  
Victoria Summerall  
Milk Tea  
Sara Terry  
Rhonda Thomas  
Krone Weidler  
Michele Wheeler  
Karen Whitt

## PRINCIPAL CONTRIBUTOR | \$1,500 - \$2,499

Jennifer Chambers  
Katherine D'Zmura  
Friedman  
Melissa Gombert  
Ana Hernandez

Judith Levine  
Phyllis Liebman Brill  
Monica Luera  
Anne Madyun

Marie McLucas  
Lindsay Mingee  
Judith Nitsch  
Michele O'Connor

Karie Ramsey  
Stephanie Sprengle  
Jennifer Thomas  
Tracy Treger

## ASSOCIATE CONTRIBUTOR | \$500 - \$1,499

Kim Addy  
Kathleen Allgier  
Jessica Avignone  
Kathryn Barker  
Melanie Baumhover  
Christopher Blissett  
Cecily Bolding  
Dannielle Booth

Ginger Bryant  
Emily Butler  
Alyssa Byrd  
Katrina Cadalbert  
Lindsey Cannon  
Jennifer Carey  
Tammy Carr  
Shana Carroll

Karen Case  
Elizabeth Chapman  
Susana Chavez  
Maya Citlalli  
Jim Colegrove  
Elena Cutshall  
Michelle DeCarlo  
Frances Delgorio  
Megan Dempsey  
Kelli Dickerson  
Collete English Dixon  
Pamela Donaldson  
Kate Duncan  
Tina Essegian  
Brandi Floyd  
Cassandra Foster  
Joyce Fownes  
Laurinda Frederick  
Katherine Howe Frilot  
Mary Fuller  
Kathryn Gallagher

Lynn Goessling  
Christine Gorham  
Shelly Gouin  
Becky Groth  
Vicky Gunning  
Cheryl Hardt  
Laura Haynes  
Susan Held  
Heather Hoffman  
Elaine Howard  
Cyndi Hulett-Hunt  
Karen Hurd  
Cecilia Hyun  
Danielle Kaiser  
Alaina Kiewit  
Julie Kimble  
Jeanie Springer Knight  
James Larkin  
Rosemary Loverdi  
Casey Lowery  
Jennifer Luce



Participants at a UCREW event, CREW Montreal



## ASSOCIATE CONTRIBUTOR | \$500 - \$1,499 (continued)

Sarah Luem  
Andrea Lukens  
Marianne Mathieu  
Megan Matthews  
Jennifer Mazawey  
Megan McGinnis  
Terry Montesi  
Lexi Moriarty  
Nina Murrell  
Jeannie Nguyen  
Barbara Oddo  
Ann Olson  
Diane Paddison

Julie Parker  
Brian Peters  
Patricia Pinto  
Lisa Quateman  
Allison Rabin  
Tori Robinson  
Julia Rocco  
Christie Rock  
Erin Ross  
Christine Sbarra  
Jennifer Scher  
Anna Schmidt  
Cindy Schooler

Nichole Segura  
Perry Seto  
Mary Slade  
Ellen Smith  
Doug Stewart  
Lauren Stokes  
Denise Storaasli  
Heidi Swygert  
Kathleen Taylor  
Sandra Taylor  
Leslie Teskey  
Kristen Thall Peters  
Erin Thiebert

Erin Todd  
Sally Tyler  
Jessica Voss  
Elaine Vrooman  
Virginia Weida  
Melissa Wilhelm  
Mary Wilken  
Olivia Wirth  
Marsha Womack  
Laura Young  
Beth Zafonte  
Ellen Wolfson

## LEAD CONTRIBUTOR | \$100 - \$499

Victoria Abbasi  
Mansur Abdul-Malik  
Josephine Aberle  
Sarah Abrams  
Vanessa Abreu  
Sharon Addison  
Linda Adler  
Gloria Aguilar  
Abbey Dohring Ahern  
Debra Aitken  
Marianne Ajemian  
Holly Alexander  
Laura Alice  
Anna Allen  
Ivette Alvarado  
Elizabeth Amaral  
Sarah Amos  
Anuska Amparo

M. Maureen Anders  
Kristin Anderson  
Shirley Anderson  
Brantley Anderson  
Laura Anderson  
Casey Anderson  
Mercedes Angell  
Janet Annan  
Carrie Gartside Anthony  
Stephanie Frieese Aron  
Karla Arriola  
Morgan Atkinson  
Ashley Aust  
Claudia Avalos  
Elena Ayers  
Jolee Aylesworth  
Laurie Babb  
Lacey Bacchus  
Sally Bach  
Rebecca Bachand  
Candice Bailey  
Alexis Baker  
Amy Baker  
Nana Baker  
Rebecca Bakke  
Kathleen Bands  
Jennifer Banks  
Sabrina Barber  
Justice Barber  
Amy Barilla

Jessica Barnes  
Debra Barnes  
Jennifer Barrett  
Sandra Barton  
Elizabeth Basden  
Alan Bass  
Olga Bastiaannet  
Jenna Bates  
LaShawn Bates  
DeeVonda Batres  
Roslyn Bazzelle  
Kate Beal  
Paula Beasley  
Christine Beck  
Dawn Beck  
Shokrina Radpour Beering  
Becky Bell  
Heba Bella  
Laura Bellotti Cardillo  
Christina Beltran  
Laura Berdebes  
Suzanne Bereis  
Teena Bergstrand  
Maura Moran-Berry  
Julie Berry  
Rachael Berthiaume  
Sophie Bidek  
Zelleka Biermann  
Jodi Bird  
Viveca Bissonnette

Kim Blair  
Karen Blanchard  
Heidi Blau  
Wendy Feldman Block  
Trish Blue  
Brenda Bodian  
Gary Bollinger  
Annmarie Bonanno  
Matt Bonanno  
Aroona Boodram  
Kelli Boonstra  
Jodi Borges-Bradley  
Francine Borillo  
Lauren Borrell  
Lynn Bortolan  
Jennifer Bosser  
Stacey Boston  
Leanne Bowen  
Kellye Bowers  
Taylor Boyd  
Lynnette Boyle  
Elizabeth Boyle  
Jacqueline Bozzuto  
Cindy Bragdon  
Melissa Brams  
Kate Brandy  
Suzanne Brasuell  
Pamela Bratton  
Jarrod Bray  
Elizabeth Bray



## LEAD CONTRIBUTOR | \$100 - \$499 (continued)

Ashley Breakfield  
Hannah Breed  
Barbara Briccotto  
Whitney Brignolo  
Stacey Brock  
Deborah Brockley  
Amy Broderick  
Miriam Brodie  
Kenya Brooks  
Ernest Brown  
Emily Brown  
Kristina Brown  
Melissa Brown  
Marcie Brown  
Kim Brown  
Danielle Brown  
Robyn Brown  
Lissa Brutus  
Cindy Buchanan  
Mary Buche  
Jamie Buckley  
Jacqueline Buhn  
Lori Buhs  
Karen Buntin  
Kellie Bunyi  
Katie Burden  
Maura Buri  
Beth Burke  
Katie Burlager  
Tara-Lea Butler  
Kim Buxbaum  
Erin Cabelus  
Jason Cadalbert  
Rachele Cagle  
Colleen Cahill  
Kimberly Cameron  
Melissa Campanella  
Joanne Campanile  
Cindy Campbell  
Nicole Campbell  
Savannah Carbine  
Linda Cardenas  
Gene Cardle  
Kari Carleton  
Aimee Carlson  
Veronica Carousos  
Kathy Carr

Fey Carroll  
Chelsea Carroll  
Doris Carter  
Kate Carter  
Annemarie Caruso  
Susan Casamassima  
Della Castillo  
Marnie Castleberry  
Jesse Cathey  
Lauren Cazenave  
Robin Chamberlin  
Estelle Chan  
Julita Chanas  
Lisa Chapman  
Theddi Chappell  
Su Hong Chen  
Michelle Chien  
Adrianne Chillemi  
Barbara Chirinos  
Robin Choate  
Chandler Choate  
Rhianon Chow  
Ali Christensen  
Jacki Christopher  
Erin Hope Christy  
Stephanie Chung  
Kacy Cigarroa  
Jill Cisar  
Celeste Clancy  
David Clark  
Meghann Clark  
Dana Clark  
Jennine Clark  
Melissa Clarke  
Tiffany Clement  
Michelle Mills Clement  
Brenna Cleveland  
Joanna Cloud  
Kathleen Cloud  
Monetha Cobb  
Kathryn Cochill  
Leslie Cohen  
Jessica Colby  
Courtney Cole  
Cortney Cole  
Lori Coleman  
Lynda Collie



*Exchanging ideas at CREW Iowa CREW Careers event*

Sherri Commander  
Brenda Compton  
Laura Concannon  
Damien Condo  
Ann Cone  
Bobbi Jo Conigliaro  
Anne Conner  
Meghan Connifey  
Colleen O'Connor  
Andrea Connors  
Kristin Conroy  
Deanna Console  
Sara Cook  
C. Skye Cook  
Leslie Cook  
Nicky Cooke  
Christi Copenhaver  
Josie Legido Correa  
Ka Cotter  
Kristina Covall  
Laura Cox  
Katherine Cox  
Kathleen Coxe  
Jennifer Cranston  
Melissa Cresser  
Dianne Crocker  
Sarah Crouch  
Bo Crouse-Feuerhelm  
Kristen Croxton  
Nicole Cuellar  
Audra Cunningham  
Margaret Cunningham  
Lori Mason Curran  
Anthony Curtis

Alec Dadisman  
Christina Dadoush  
Jacqueline Dahlquist  
Kate Damato  
Tara Damschen  
Beth Daniel  
Johnetta Daniels  
Deb Davis  
Romona Davis  
Kaelyn Davis  
Leslie Davis  
Abigail Day  
Jared De Los Santos  
Alison Dekok  
Megan Dellapina  
Anna Denton  
Ashley DePasquale  
Ashia Derksen  
Anne Desormier-Cartwright  
Stephanie Deviney  
Samantha Dewan  
Denise Dexter  
Amanda DeYoung  
Jennifer DiCenzo  
Annemarie DiCola  
Holly DiDonato  
Marie Dieckmann  
Leslie Dillingham  
Sharon DiPaolo  
Christine DiSalvo  
Laura DiTommaso  
Julie Dixon  
Nadine Dlodlo  
Kirsten Dolan

## LEAD CONTRIBUTOR | \$100 - \$499 (continued)

Liz Doll  
Kathy Dollar  
Jennifer Dorgan  
Jetta Dorsey  
Aaron Douglas  
Genevieve Douglass  
JoAana Dowd  
Jennifer Doyle  
Doris Drain  
Angela Drumm  
Lenora DuBose  
Anne Duggan  
Sherie Duncan  
Jordan Dunn  
Connie Duong  
Brooke Duran  
Kristy Dutch  
Christine Dyche  
Angie Earlywine  
Lauri Easley  
Laura Eberly  
Amy Ehlers  
Elizabeth Eitan  
Maria Elefante  
Joni Elekes  
Brock Eller  
Julia Emerson  
Kimberly Enders  
Courtney Engberg-Hulse  
Laura Engen  
Tara England  
Chris English  
Krystle English  
Jayne Epperson  
Eric Erickson  
Kristen Ernst  
Brigitte Esau  
Gwen Essegian  
Whitney Estep  
Kayla Evans  
Donna Evers-Southard  
Julia Evinger  
Trisha Ewert  
Brenda Ezell  
Christen Faatz  
Vicki Facto

Samantha Falcone  
Karen Farrell  
Candace Chin Fatt  
Andrea Fazendin  
Cindy Feinberg  
Susan Felts  
Hilary Fentress  
Christina Fenwick  
Lyan Fernandez  
Mimi Fersch  
Barbara Fife  
Christal Fish  
Susan Fisher  
Daniela Fitzgerald  
Sheena Fitzpatrick  
Danuta Fitzsimmons  
Sandi Flantzer  
Danielle Fleming  
Carolyn Fletcher  
Brenda Fodge  
McKenzie Followwill-Lotz  
Shawna Foltz  
Farrah Forbes  
Larisa Forester  
Jenny Forrest  
Lynette Dreitz Fort  
Beverly Fortner  
Charlie Fowler  
Emma Fox  
Carline Cadet Francois  
Tracie Frazier  
Jillian Fredericks  
Jason Frederico  
Kameshia Freeman  
Eric Freeman  
Anna Fresonke  
Caroline Frith  
Lauren Fry  
Lisa Frydenborg  
Ashley Frysinger  
Lindsey Fudge  
Brooke Gabrielsen  
Michelle Gail  
Tricia Gallagher  
Peggy Gallagher  
Lena Garcia



*A CREW Careers event hosted by CREW Charlotte*

Steven Garcia  
Liam Garland  
Noelle Garsek  
Kim Gasper  
Jenna Geigerman  
Crystal Genter  
Andrea George  
Victoria Gereluk  
Julia Geykhman  
Navneet Ghoman  
Julie Gibson  
Kathy Gigac  
Marissa Gigantelli  
Debra Gilbreath  
Elise Giles  
Nancy Gille  
Teresa Giltner  
Daniela Girard  
Bianca Giron  
Kirsten Glaser  
Abby Glassberg  
Jessica Glavas  
Lori Glebocki  
Nori Gleeman  
Dana Kreis Glencer  
Erica Godun  
Vickie Goergen  
Katie Goldberg  
Kari Golden  
Fern Goldman  
Molly Gole  
Stephanie Golembeski  
Felicia Gondomulia  
Lydia Gonzales  
Emily Gonzalez  
Chinyere Gonzalez  
Elizabeth Gooch  
Virginia Gordon  
Latricia Gordon  
Sandy Gordon

Erin Grable  
Jeanine Grachuk  
Jackie Graham  
Donna Grau  
Kristin Gray  
Lisa Greaves  
Kelly Greco  
Linda Green  
Maudelyn Greene  
Vanessa Gregory  
John Greiwe  
Laurie Griffith  
Holly Grimes  
Tiffany Grinkevich  
Melissa Gross-Arnold  
Nicole Grzywacz  
Lee Ann Gudorp  
Shree Guha  
Laurie Gustafson  
Brian Guttman  
Christine Hadman  
Jennifer Hafner  
Pauline Hale  
Melissa Hall  
Linda Hall  
Alison Hall  
Karen Halpert  
Lindsey Halter  
Mona Hand  
Stephanie Handley  
Stacy Hanna  
Stacey Hanrahan  
Marilyn Hansen  
Genevieve Hanson  
Susanne Hanson  
Rachel Harms  
Dustin Harper  
Jennifer Harris  
Paula Harris  
Allison Harrison



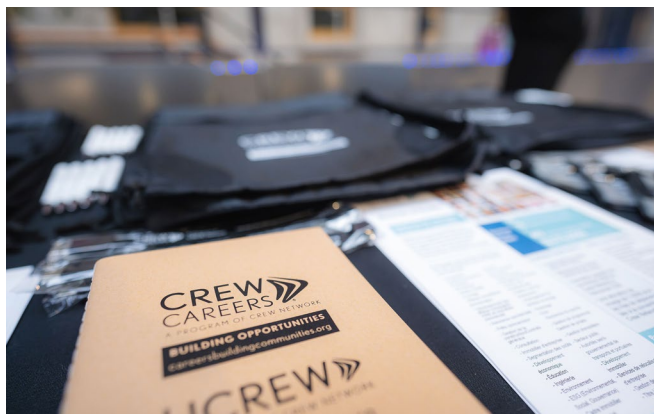
Michele Harry	Kimberly Hopkins	Trina Joseph	Jayme Kosal
Nicole Harshbarger	Kristin Hornberger	Samantha Julka	Cincha Kostman
Edie Hartman	Catherine House	Stacey Juran	Maria Koulopoulos
Shelley Hartnett	Chase Houston	Mary Jury	Denise Kouril
Pamela Hartsell	Michelle Howard	Richard Kahler	April Kovari
Kimberly Harvey	Robin Howe	Lisa Kahler	Karen Kowal
Erin Harvey	Paula Howell	Heather Kampa	Claire Kowalski
Lauren Harvison	Tracy Howren	Cecilia Kane	Valeria Kozhich
Jay Haselden	Amanda Huang	Cindy Kaneer	Shea Kracheck
Melissa Hasenmayer	Daylene Huff	Camille Kanofsky	Laura Kreuger
Dawn Hathaway	Shannon Huffer	Krista Karlson	Elizabeth Krol
Laura Havel	Sonya Huffman	Usha Kasali	Sandra Kuhns
Trudy Hawk	Lauren Hughes	Julie Katora	Priya Kumbhojkar
Arlena Hawthorne	Katie Hunter	Danielle Kaufman	Sharon Kun
Paul Hayden	Kristine Hurlbut	John Kauppila	Kelly Kurlbaum
Darlene Hayes	Laurie Hutner	Jennifer Keaton	Glenn Kurtz
Susan Hays	Olena Ivanenko	Daniel Keenan	Linda Kuryloski
Sarah Hazani	Tameca Ivy	Amy Kellogg	Ligia Labrada
Lexi Hazen	Erica Jablonsky	Tammy Kelly	Dana Ladd
Sherri Heath	Jawanda Jackson	Jenni Kelly	Barbara Lagoe
Elizabeth Hedrick	Ashley Jager	Emily Kelly	Ashley Lai
Meredith Hedstrom	Molly Jans	Mindy Kermes	Caitlin LaJoie
Yvonne Heerema	Michelle Jarvis	Angela Kesselman	Regina LaMacchia
Janet Helms	Cloteen Jasmin	Helen Kessler	Katie Lambert
Peggy Henderson	Allison Jasper	Rosalie Keszler	Anna Landers
Megan Hendrickson	Jan Jasper	Meron Kidane	Lesle Lane
Conilee Hennersdorf	Brandon Jasper	Melanie Kido	Amy Lang
Christeen Hennes	Lisa Jebodhsingh	Kristin Killgore	Kierstin Lange
Kristen Hernandez	Michelle Jenkins	Julie Kilpatrick	Michele Langenberg
Kathy Hernandez	Marcie Jensen	Angie Kim	Jessica Lara
Marilyn Herzberg	Dara Jenthanomma	Monika King	Linda Larabee
Kristen Hess	Beth Johns	Yolanda King	Colleen Larkin
Amanda Hibberts	Lauren Johnson	Rachel King	Lynn Larkin
Rachel Hickenbottom	Rian Johnson	Ashley King	Tania Laroche
Krista Hickman	Liz Johnson	Debbie Kirk	Cecilia Lassiter
Susan Hill	Julie Johnson	Mackenzie Kisslinger	Elke Laughlin
Carrie Hill	Carolyn Johnson	Chelsey Klasnich	Amanda Lavi
Linda Hindmarch	Terri Johnson	Dawn Klassen	Jennifer Law
Kimberly Hogan	Lee Johnson	Eloise Klein	Kimberly Law
Britt Hoglund	Angel Jones	Ralph Knauss	Paula Lawrence
Adrianne Holland	Ashley Jones	Karla Knight	Erin Leach
Moirra Holland	Tanya Jones	Gwen Knight	Kelly Leanos
Carrie Holt	Rebecca Jordan	Dorrie Knizatko	Catherine Leap
Sabina Holtzman	Ryan Jordan	Krista Korinis	Rose McCabe LeBreton
Jennifer Hoover	Samantha Jordan	Robert Kort	Krystal Lee
Roseanne Hope	Ronald Joseph	Jodi Korth	Gina Lee

Tessa Leftwich  
 Rae-Ann Lehman  
 Maxinne Leighton  
 Marcia Lester  
 Karen Levine  
 Michelle Lewis  
 Christina Lewis  
 Shanique Lewis  
 Marya Liebezeit  
 Jenny Liles  
 Susan Linginfelter  
 Caroline Linton  
 Pamela Little  
 Jennifer Litwak  
 Jody Longwill  
 Dinora Lopez  
 Tiffani Lorenz  
 Michelle Lorenz-Sharpes  
 Amanda Love  
 Patricia Loveall  
 Samantha Low  
 Jessica Lozon  
 Tina Lu  
 Yunia Lubega  
 Mollye Lueders  
 Deborah Lukan  
 Laurel Lukesh  
 Katy Lumpkin  
 Nancy Lundeen  
 Virginia Luther  
 Melissa Lutz  
 Elizabeth Lutz  
 Tobi Lutz  
 Rachael Lyman  
 Lauren Lyngholm

Joy Lynskey  
 Jane Lyons  
 Momo MacDonald  
 Kelsey Machuca  
 Kathleen Maciejko  
 Lisa MacIntosh  
 Cindy MacMillan  
 Susan Maddox  
 Shelby Madrid  
 Kristine Maggio  
 Liz Mahoney  
 Lacey Maki  
 Gail Malloy  
 Vitina Mandella  
 SaraBeth Mantia  
 Alex Mantoni  
 Kim Marks  
 Nina Marshtein  
 Jacqi Marth  
 Keren Marti  
 Megan Martin  
 Katie Martinovic  
 Susan Matejcak  
 Chris Matejka  
 Teresa Matozzo  
 Robert Mattler  
 Sarah Matz  
 Shelly Maurer  
 Monica Mauricio  
 Siena Mauvais  
 Angela Maverick  
 Amy Mayer  
 Sam Maynard-Hall  
 Tiffany Hanzik McAllister  
 Sam McCabe

Maureen McCaffrey  
 Caitlin McCain  
 Tina McCall  
 Caitlin McCann  
 Jill McCarthy  
 Monica McCaslin  
 Andrea McClain  
 Jennifer Jarl McCombs  
 Marie McConnell  
 Beth McDonald  
 Jen McDonald  
 Christy McFall  
 Melissa McGarry  
 Gretchen McGill  
 Sarah McGillicuddy  
 Katye McGinnis  
 Madeline McGrane  
 Nichole McGuire  
 Ann McGuire  
 Joy McKenna  
 Sarah McLain  
 Anna McLamb  
 Kimberly McNabb  
 Ann McSherry  
 Laura Meanwell  
 Mithra Mehdikhani  
 Sue Meier  
 Taisiya Mellinger  
 Jerri Menaul  
 Courtney Menjivar  
 Judith Mergilles  
 Sarah Mergy  
 Sallie Merker  
 Kendall Merrick  
 Lindsay Merritt  
 Jody Merritt  
 Lisa Metzler  
 Sandy Meyer  
 Edna Meyer-Nelson  
 Brittany Michael  
 Kelly Michajlenko  
 Amber Michels  
 Jennifer Miles  
 Elizabeth Bryson Miller  
 Kelly Miller  
 Kelly Hewitt Miller  
 Dina Miller

Marisol Miller  
 Julie Miller  
 Patricia Miller  
 Jamie Millsbaugh  
 Susan Milne  
 Catherine Mini  
 Amy Mistler  
 Shannon Mitchell  
 Alina Mizerniuc  
 Lisa Moehle  
 Mona Mohajerani  
 Luke Mohlenhoff  
 Elisabeth Molchan  
 Darcy Monday  
 Susan Monik  
 Isabela Montalvo  
 Cheryl Moody  
 Stephanie Moore  
 Pamela Morris  
 Lesley Morrison  
 Amara Morrison  
 LaVon Morrow  
 Cynthia Morton  
 Mary Moss  
 Meg Mueller  
 Debi Munoz  
 Maureen Munroe  
 Mary Ann Murray  
 Jessica Mustafa  
 Gillian Myers  
 Sharat Nagaraj  
 Tina Naqvi-Rota  
 Sarah Narjes  
 Whitney Nash  
 Robert Nelson  
 Heather Nelson  
 Katie Nelson  
 Stacia Neugent  
 Jen Nevil  
 Katie Newitt  
 Bailey Newlin  
 Laura Nguyen  
 Cheryl Nichols  
 Jacqueline Nickolaus  
 Jean Niemczyk  
 Colleen Niese  
 Colleen Nigro



Cristy Nine	Carrie Perez	Jennifer Raymond	Brenda Saavedra
Stacy Nishioka	Catalina Perez	Katie Redican	Kat Sabo
Amanda Norris	Irene Perkins	Amanda Redmond	Julie Sabroff
Emily Northcutt	Carissa Perkins	Krista Reed	Mary Salas
Niki Norton	Makenna Peter	Lauren Reeves	Laraine Saldivar
Yvonne Nyakana	Jennifer Peters	Blyth Rehberg	Charles Salley
Jeannie Nyberg	Teresa Peters	Abby Reichling	Natalie Sanko
Catherine O'Connor	Jennifer Peters	Julie Reimann	Cindy Santilena
Claire O'Connor	Damon Peters	Robyn Reiss	Rachel Santos
Heather Odegaard	Ashlyn Petersen	Art Rendak	Jennifer Santoso
Rachael Oelke	Grace Peterson	Jennifer Reyes	Courtney Santry
Runo Okiomah	Abigail Peterson	Nicole Rice	Emily Sarella
Melissa Oliver	Casey Petit	Heather Rich	Leslie Saul
Cynthia Olsen	Rosalin Petrucci	Carly Richardson	Samra Savioz
Jackie Orcutt	Katelyn Phelps	Megan Riess	Maddie Sawatzky
Sarah Goss O'Rielly	Rob Phillips	Laura Riso	Serena Sayani
Rachel Orr	Jean Phillips	Shauna Ritter	Melinda Saylor
Hellen Osorio	Angela Piarowski	Lynn Rittgers	Mindy Sayres
Heather O'Toole	Aarohe Pilankar	Lisa Robach	Barrie Scardina
Jack Owens	Kristen Pleasants	Bonnie Boeshart Roberts	Ryan Schaefer
Cassie Paben	Linda Plesic	Alayna Robst	Nicosha Schedlbauer
Keiko Pace	Katie Plett	Jessica Rodriguez	Scharla Scheibe
Geri Pacheco	Misty Ponce	Cesar Rodriguez	David Scher
Blanca Padilla	Annette Popiel-Hammerle	Rebecca Rodriguez	Jane Schiff
Nicoletta Pagnotta	Genieve Posen	Jennifer Rodriguez	Carol Schillne
Janice Paine	Ilona Posner	Ricci Rodriguez-Elkins	Cathy Schmidt
Jennifer Paisley	Scarlet Powell	Melanie Rogacki	Lisa Schmidt
Susan Palazzola	Amy Prange	Melissa Roman	Sherry Schmidt
Diana Palecek	Seda Preston	Julian Rondello	Joanna Schmitt
Emily Paparella	Laura Prewett	Connie Ronner	Erin Schoop
Eddie Paredes	Valeria Price	Evelyn Rosales	Kristen Schrader
Monica Parikh	Karen Priesman	Jill Rose	Amy Schroeder
Lori Parker	Hudson Properties	Nelly Rosenberg	Monica Schroeder
Susan Passmore	Cathy Pryor	Courtney Rosenkrantz	Michael Schrum
Madhvi Patel	Jacqueline Pueppke	Kristine Rosenthal	Kristin Schul
Karen Patino	Marie Purkert	Joan Rosoff	Darcey Schumacher
Camille Patterson	Elizabeth Pye	Jessica Rossi	Wendi Schweigart
Monique Payan	Suzanne Pyles	Kimberly Rossiter	Chris Schweighart
Tammy Pearce	Linh Quach	Noelle Rouhana	Heather Schwemlein
Naya Pearlman	Kristen Quinlan	Dawn Royle	Alex Schwerdt
Robin Pearson	Michelle Quirk	Cathy Rudisill	Lisa Serafin
Cathy Peate	Lyndon Raatz	Samantha Rudolph	Carrie Sermersheim
Jeanne Peck	Susan Rainey	Dare Ruffin	David Shaffer
Sarah Peck	Travis Ramsdell	Wendy Ruggiero	Pooja Sharma
Nicole Pecoulas	Neda Rastegari	Tammy Ruppel	Sonia Sharma
Helen Peil	Connie Raub	Elizabeth Russell	Kirsty Shearer
Michele Pellico	Sonika Rawal	Christine Russell	Karen Sheldon



Shannon Sheridan  
 Larry Sherlock  
 Linda Sherman  
 Natalie Sherod  
 Josh Shobe  
 Rebecca Shoal  
 Carrie Sickels  
 Anastassia Sidorova  
 Shawna Sieck  
 Carolyn Sillin  
 Elsa Simaan  
 Ginger Simoens  
 Kristy Simonette  
 Lacie Simonton  
 Allison Simpson  
 Allison Simpson  
 Cari Sippel  
 Ron Sisneros  
 Deborah Skeans  
 Kelly Sklar  
 Katherine Slater  
 Lisette Sluser  
 Tara Smiley  
 Donna Smith  
 Suzanne Smith  
 Fred Smith  
 Leslie Smith  
 Leah Smith  
 Yesenia Marili Smith  
 Rebecca Smith-Zakowicz  
 Julie Snyder  
 Elizabeth Solender  
 Angie Sommer  
 Carolyn Sood  
 Ginger Sotelo  
 Tabitha Spencer  
 Laurae Spindler  
 Gail von Staden  
 Susan Stafford  
 Susan Stanton  
 Ivka Starcevic  
 Jennifer Stein  
 Stacy Stemen  
 Brenda Stephany  
 Vitre Stephens  
 Joanna Stevens

Mark Stevens  
 Ashley Stewart  
 Jennifer Stewart  
 Marina Stingley  
 Catherine Stokes  
 Jessica Straub  
 Kristi Straw  
 Jessica Street  
 Sheyenne Stretz  
 Bonnie Stretz  
 Cheryl Strickland  
 Diane Strojic  
 Paula Stubblefield  
 Jennifer Stueber  
 Elissa Sturdivant  
 Leslie Suhr  
 Sue Sullivan  
 Roger Sullivan  
 Bob Sullivan  
 Nellie Sullivan  
 Cheri Sutton  
 Alina Suyama  
 Lisa Sweeney  
 Kathleen Swien  
 Susan Swift  
 Susan Talley  
 Lori Bliss Tambone  
 Amanda Tang  
 Andrea Taylor  
 Valerie Taylor  
 Anne Teshima  
 Elizabeth Teske  
 Mythili Thiagarajan  
 Wendi Thom  
 Lisabeth Thomas  
 Katherine Thomas  
 Teri Thompson  
 Leslie Thompson  
 Lynne Thompson  
 Sarah Thorley  
 Nikki Thornton  
 Davina Thorpe  
 Laura Thurman  
 Linda Tighe  
 Sarah Tillar  
 Erin Timko

Sara Todd  
 Kenzie Tolbert  
 Amber Tomasiello  
 Sheila Traficante  
 Carolina Venegas Trahan  
 Jacqueline Trost  
 Laurie Trudell  
 Jessica Turner  
 Yvette Turner  
 Susan Turner  
 Hilary Tyson  
 Erin Valentine  
 Katherine VanBerschot  
 Erica Vanover  
 Galit Ventura-Rozen  
 Alicia Vera  
 Myra Villalobos  
 Connie Vinson  
 Lisa Vogel  
 Alexis Volen  
 Donna Volpone  
 Brenna Wadleigh  
 Betsy Hobbs Wagner  
 Leslie Wagner  
 Kate Wai  
 Bridgett Walker  
 Trixy Walker  
 Lauren Walker  
 NoRhett Walls  
 Christine Walp  
 Michele Walsh  
 Terese Walton  
 Johanna Ward  
 Laura Ward  
 Michelle Warriner  
 Alicia Washeleski  
 Amberly Washington  
 Paul Watkins  
 Megan Watson  
 Serena Wedlich  
 Heather Weerheim  
 Peggy Wei  
 Katherine Welch  
 Dan Wellings  
 Kimberly Wells  
 Jaren Wells

MaryKay West  
 Alex Westberg  
 Justinn West-Wheatley  
 Janet Wheeler  
 Kendra White  
 Tamarra Wickes  
 Melissa Wiechman  
 Yvonne Wild  
 Linda Willey  
 Sarah Williams  
 Elisabeth Williams  
 Jenna Williams  
 Misty Moore Willard  
 Brittney Willis  
 Julie Wilson  
 Staci Wilson  
 Marianne Wilson  
 Kristine Wilson  
 Danette Winkler  
 Kmeal Winters  
 Nicole Wolfe  
 Elsie Wu  
 Audrey Wykes  
 Alysha Yagoda  
 Jadine Yakimovitch  
 Michelle Yaklin  
 Michelle Yates  
 Tracy Yeakle  
 Whitney Yelm  
 Julie Young  
 Valery Young  
 Karen Young  
 Mike Yu  
 Katie Yuen  
 Megan Zaccardelli  
 Megan Zack  
 Cristina Zampieri  
 Kelli Zarembo  
 Shirin Zarinkia  
 Beth Jo Zeitzer  
 Patricia Zelayandia  
 Brooke Zentmeyer  
 Christi Zimmerman  
 Christine Zinkgraf  
 Tom Zuk



**HEADQUARTERS**

1201 Wakarusa Dr., Suite D

Lawrence, KS 66049 USA

T: +1 (785) 832-1808

F: +1 (785) 832-1551

The only Foundation dedicated solely to accelerating success for all women  
in the global commercial real estate industry.



**CANADIAN REGIONAL OFFICE**

2500-1 Place Ville Marie

Norton Rose Canada

Montreal, QC H3B 1R1