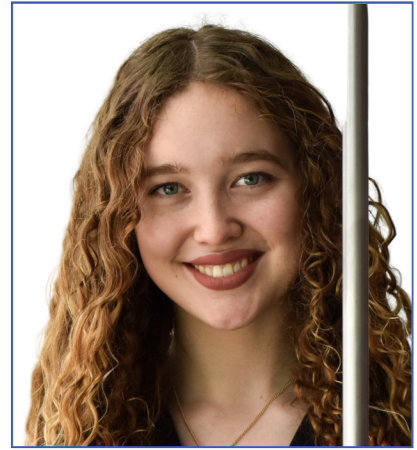


## 2025 CREW Lehigh Valley Scholarship Winners



MAILE CONCEPCION, MARYWOOD UNIVERSITY



LINDA YARDOLO, MARYWOOD UNIVERSITY

# 2026 CREW LEHIGH VALLEY SCHOLARSHIP PROGRAM

APPLICATIONS WILL BE ACCEPTED THROUGH APRIL 10, 2026



\$2,500 award for educational expenses



FREE CREW LV student membership for 2026 and 2027



FREE registration to one CREW LV meeting or event

CREW Lehigh Valley is proud to announce its 2026 Scholarship Program awarding scholarships to local deserving females or those who identify as female, who intend on pursuing a career in a qualified field of Commercial Real Estate.



## ABOUT THE SCHOLARSHIP

### SCHOLARSHIP APPLICATION REQUIREMENTS:

- Must currently be enrolled in a Lehigh Valley or surrounding areas accredited college, university or trade/technical school
- Must be pursuing a degree in a field related to the commercial real estate industry
- Available to Undergraduate rising Sophomores, Juniors and Seniors, or have completed at least one semester of trade/technical school and be enrolled for the Fall 2026 term.
- Currently hold a grade point average of 3.0 or higher

### REQUIRED DOCUMENTS

- Online application form with the following uploads.
- Academic transcript, current through at least December 2025, with a cumulative average.
- Required essay of 500 words or less: Clearly describe your academic and professional goals, their relevance to your program and specifically, your intent to have a career in commercial real estate.
- Two letters of reference from an academic, employment or personal source (if personal, your reference should know you for five years or more).

**CREW LEHIGH VALLEY OUTREACH COMMITTEE**  
645 W HAMILTON ST SUITE 800 ALLENTOWN LEHIGH PA 18101  
CREWLEHIGHVALLEYSCHOLARSHIPS@GMAIL.COM



# 2026 SCHOLARSHIP PROGRAM

CREW Network exists to transform the commercial real estate industry by advancing women globally. It was founded to bring together women involved in the many aspects of commercial real estate to exchange information, develop business contacts, and help each other succeed professionally. We provide support to our members worldwide through business networking, leadership development, industry research, and career outreach.

CREW Lehigh Valley promotes networking opportunities, industry-driven events, and professional development programs to help our members be successful in the commercial real estate industry throughout Pennsylvania. Our chapter is comprised of a diverse collection of professions and disciplines that represent the commercial real estate. Our purpose is to create an inclusive environment that advances the achievements and impact of women in the commercial real estate industry.

#### Benefits:

- Access to professionals in the multiple fields necessary to complete a commercial real estate transaction.
- Increased business opportunities. A recent survey indicated that more than 70% of CREW members have received or given a referral to or from another member.
- Discounted registration fees and member-to-member interaction and networking at CREW events and conventions.
- Members-only CREW events and programs.
- Membership in CREW Network (included) provides connections to members and markets around the globe.
- Access to CREW Network's membership directory, listing 12,000 commercial real estate professionals in 75+ markets.
- Access to online member-only resources on the CREW Network website, including discounts on job posts shared globally, a discussion forum to communicate with 12,000 members, member directory, and other resources.
- Targeted charitable giving through grants and scholarships selected and monitored by CREW Network Foundation, the only philanthropic organization that's dedicated to bringing more women into the CRE industry.
- A world of friendship, fun, and support through CREW Lehigh Valley's dynamic members.
- Every member contributes to the collective knowledge, experience, and voice of CREW Lehigh Valley and CREW Network.

Consider a career in one of these commercial real estate fields:

Accounting  
Acquisitions/Dispositions  
Appraisal  
Architecture  
Asset Management  
Brokerage  
CRE Business Development  
(100% CRE firm)

Commercial Insurance  
Commercial Lending  
Construction Management/  
General Contracting  
Consulting  
Corporate Real Estate  
Cost Segregation  
Economic Development  
Education  
Engineering  
Environmental

CRE Executive  
Facility Management  
Finance  
CRE Human Resources  
Interior Design/Space  
Planning  
Investment Management  
Investor Relations  
Land Use Planning and Zoning  
Land Surveying  
Law  
Market Research

Program Management/Project  
Management  
Property Management  
Public Sector  
Quasi-Governmental  
Transportation and Port  
Authorities  
Real Estate Development  
Relocation Services,  
Corporate  
Risk Management  
Title/Escrow

**APPLICATIONS WILL BE ACCEPTED THROUGH APRIL 10, 2026**